

ASX Announcement**ASX:STN****30 October 2018****Step-out RC drilling underway at Apollo Hill Gold Project****Key Points:**

- Program designed to test for rapid expansion of the Apollo Hill gold system.
- Several bold step-outs on multiple structures will be tested along strike from the current resource area.
- Drilling commenced prior to the planned release of new Apollo Hill resource statement¹, showing the company's ongoing confidence that the area hosts a major gold system.
- Planned program comprises an initial 20 RC drill holes for 2,500m.
- Among other geological targets, drilling will follow up on several historic aircore and RC intersections including 5m @ 25.9g/t Au – AA090 (600m along strike to the north of Apollo Hill) and 10m @ 1g/t Au – PKW0973 (900m along strike to the south of the Ra zone at Apollo Hill).



Figure 1 RC Drilling 800m along strike to the north of the Apollo Hill resource area – October 2018.

¹The Apollo Hill Gold Prospect currently contains a 0.5Moz 2012 JORC compliant inferred gold resource (17.2Mt at 0.9g/t Au) (refer to the Company's Prospectus and Independent Geologist's Report on the Company's website for details of this Resource (including Competent Persons Statement and JORC Table 1). The company finished a three phase 10,000m, 80-hole RC and diamond program in July this year and the results are being incorporated into a resource upgrade calculation due for release in an ASX statement in the coming weeks.

Saturn Metals Limited (ASX:STN) ("Saturn", "the Company") is pleased to announce that it has commenced a new phase of exploratory RC drilling at its wholly owned Apollo Hill Gold Project, near Leonora in the Western Australian goldfields.

Recent exciting drilling results at the northern end of Apollo Hill (10m @ 2.98g/t Au from 92m within 28m @ 1.20g/t Au from 82m - AHRC0036); and at the southern end of the deposit (58m @ 1.06 g/t Au from 65m including 36m @ 1.39 g/t Au from 87m - AHRC0049) have left this major gold and alteration system wide open for expansion.

The Company commenced drilling as part of this latest program earlier this week, and will initially complete approximately 20 holes for ~2,500m in its search for additional opportunities to rapidly expand the deposit's footprint.

Planned drilling as conceptually illustrated in Figure 2, will step out along a 6km long anomalous gold corridor and provide an initial test of the area between the Apollo and Ra zones. Drilling will test multiple interpreted structures and targets.

Managing Director Ian Bamborough said: *"This program of drilling is in keeping with Saturn's objective of growing the Apollo Hill gold system as rapidly as possible. We have been looking forward to testing these more expansionary targets for some time and we are hopeful the results will demonstrate the greater potential at Apollo Hill. Our confidence in the system continues to grow."*

The program is estimated to take 3 weeks to complete, with the Company providing further information as results are received and analysed.

Saturn anticipates announcing an update to the Apollo Hill resource in the coming weeks after recent drilling results returned from a three-phase, 10,000m drilling program completed in July highlighted the potential to materially increase the scale of the known mineralised system from the current 0.5Moz JORC 2012 compliant inferred gold resource of 17.2Mt at 0.9g/t Au¹.

Apollo Hill is located ~60km south-east of Leonora in the heart of WA's goldfields region (Figure 3). The Project is surrounded by excellent infrastructure and several significant gold deposits and operations.



IAN BAMBOROUGH
Managing Director
Saturn Metals Limited
08 6424 8695

LUKE FORRESTAL
Senior Account Director
Media and Capital Partners
0411 479 144

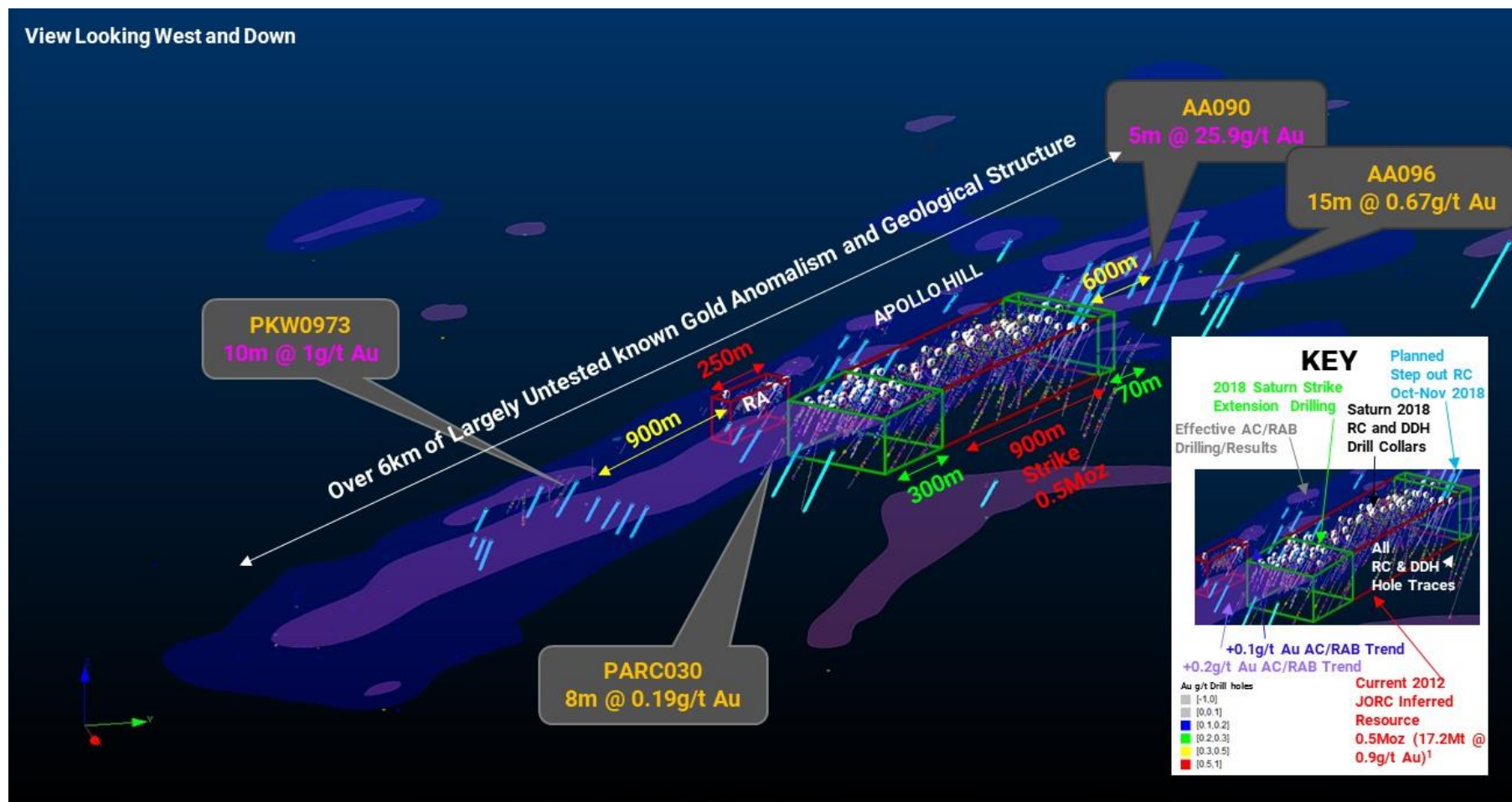


Figure 2 Large scale untested mineralised corridor, conceptual view of planned step out and exploratory drilling shown as light blue lines

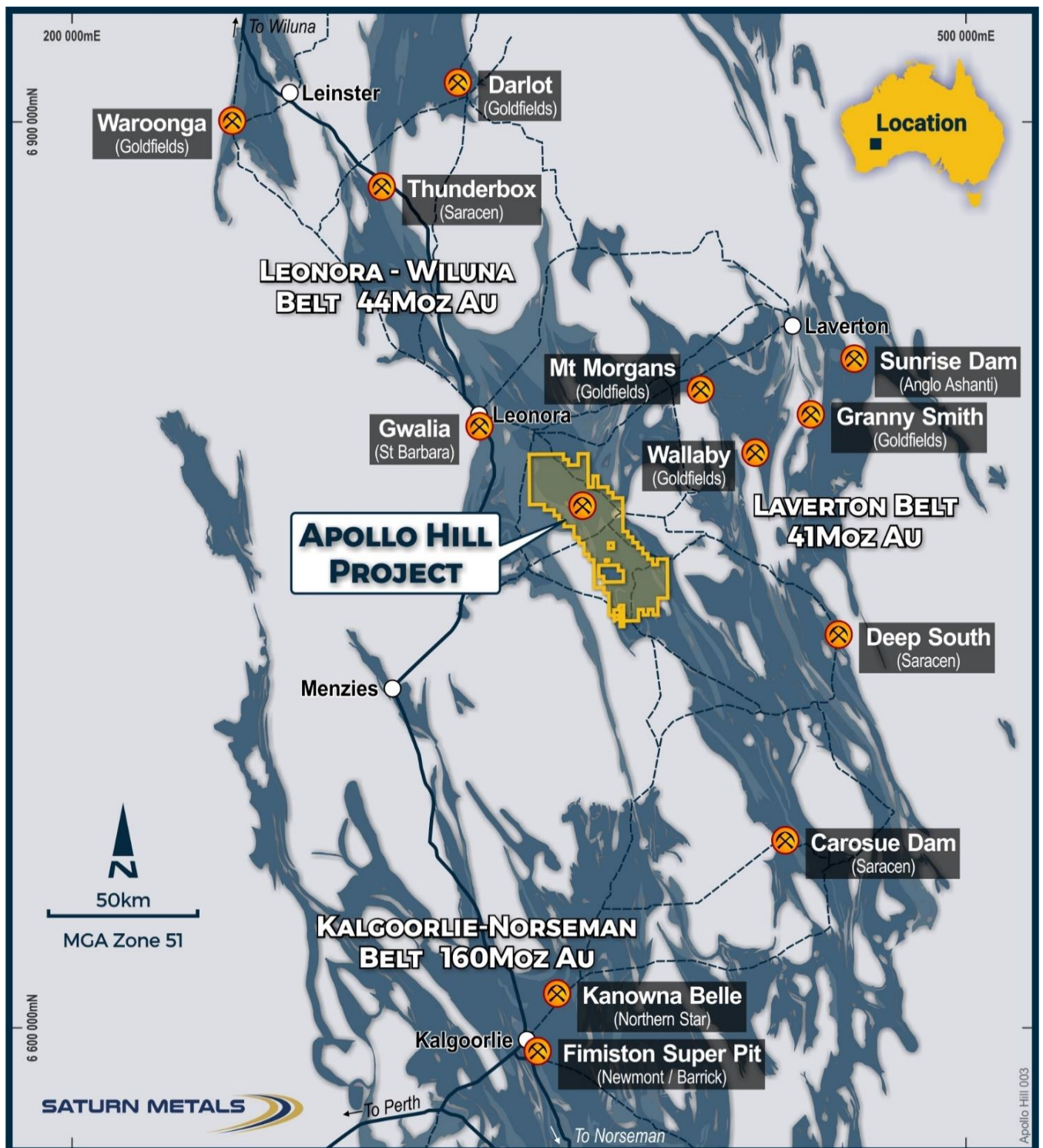


Figure 3 Apollo Hill location, Saturn Metals' tenements and surrounding gold deposits, gold endowment and infrastructure.

Competent Persons Statements

The information in this report that relates to the Apollo Hill Mineral Resource estimates, and reported by the Company in compliance with JORC 2012 is based on information compiled by Jonathon Abbott, a Competent Person who is a Member of the Australian Institute of Geoscientists. Jonathon Abbott is a full-time employee of MPR Geological Consultants Pty Ltd and is an independent consultant to Saturn Metals Limited. Mr Abbott has sufficient experience that is relevant to the style of mineralisation and type of deposit under consideration and to the activity being undertaking to qualify as a Competent Person as defined in the 2012 Edition of the "Australasian Code for Reporting of Mineral Resources and Ore Reserves". At the time of construction of the Apollo Hill estimates Mr Abbott was an employee of Hellman & Schofield Pty Ltd. Mr Abbott consents to the inclusion in this report of the matters based on his information in the form and context in which it appears.

The information in this report that relates to exploration targets and exploration results is based on information compiled by Ian Bamborough, a Competent Person who is a Member of The Australian Institute of Geoscientists. Ian Bamborough is a fulltime employee and Director of the Company, in addition to being a shareholder in the Company. Ian Bamborough has sufficient experience that is relevant to the style of mineralisation and type of deposit under consideration and to the activity being undertaken to qualify as a Competent Person as defined in the 2012 Edition of the 'Australasian Code for Reporting of Exploration Results, Mineral Resources and Ore Reserves'. Ian Bamborough consents to the inclusion in the report of the matters based on his information in the form and context in which it appears.

JORC Code, 2012 Edition – Table 1 - Apollo Hill Exploration Area

Section 1 Sampling Techniques and Data

(Criteria in this section apply to the Apollo Hill and Ra exploration area and all succeeding sections.)

Criteria	JORC Code explanation	Commentary
Sampling techniques	<ul style="list-style-type: none"> Nature and quality of sampling (eg cut channels, random chips, or specific specialised industry standard measurement tools appropriate to the minerals under investigation, such as down hole gamma sondes, or handheld XRF instruments, etc). These examples should not be taken as limiting the broad meaning of sampling. Include reference to measures taken to ensure sample representivity and the appropriate calibration of any measurement tools or systems used. Aspects of the determination of mineralisation that are Material to the Public Report. In cases where 'industry standard' work has been done this would be relatively simple (eg 'reverse circulation drilling was used to obtain 1 m samples from which 3 kg was pulverised to produce a 30 g charge for fire assay'). In other cases more explanation may be required, such as where there is coarse gold that has inherent sampling problems. Unusual commodities or mineralisation types (eg submarine nodules) may warrant disclosure of detailed information. 	<ul style="list-style-type: none"> Measures taken to ensure the representivity RC sampling include close supervision by geologists, use of appropriate sub-sampling methods, routine cleaning of splitters and cyclones, and RC rigs with sufficient capacity to provide generally dry, reasonable recovery samples. Information available to demonstrate sample representivity includes RC sample weights, sample recovery, sample consistency, field duplicates, standards and blanks. RC holes were sampled over 1m intervals by cone-splitting. RC samples were analysed by NAGROM in Kelmscott. At Kelmscott samples were oven dried and crushed to 90% passing 2mm, and pulverised to 95% passing 106 microns, with analysis by 50g fire assay.
Drilling techniques	<ul style="list-style-type: none"> Drill type (eg core, reverse circulation, open-hole hammer, rotary air blast, auger, Bangka, sonic, etc) and details (eg core diameter, triple or standard tube, depth of diamond tails, face-sampling bit or other type, whether core is oriented and if so, by what method, etc). 	<ul style="list-style-type: none"> Reverse Circulation (RC) RC drilling used generally 5.5 " face- sampling bits.
Drill sample recovery	<ul style="list-style-type: none"> Method of recording and assessing core and chip sample recoveries and results assessed. Measures taken to maximise sample recovery and ensure representative nature of the samples. 	<ul style="list-style-type: none"> Sample recovery was visually estimated by volume for each 1m bulk sample bag, and recorded digitally in the sample database. Very little variation was observed.

Criteria	JORC Code explanation	Commentary
	<ul style="list-style-type: none"> Whether a relationship exists between sample recovery and grade and whether sample bias may have occurred due to preferential loss/gain of fine/coarse material. 	<ul style="list-style-type: none"> Measures taken to maximise recovery for RC drilling included use of face sampling bits and drilling rigs of sufficient capacity to provide generally dry, high recovery samples. RC sample weights indicate an average recovery of 85-95% and were dry. The cone splitter was regularly cleaned with compressed air at the completion of each rod.
Logging	<ul style="list-style-type: none"> Whether core and chip samples have been geologically and geotechnically logged to a level of detail to support appropriate Mineral Resource estimation, mining studies and metallurgical studies. Whether logging is qualitative or quantitative in nature. Core (or costean, channel, etc) photography. The total length and percentage of the relevant intersections logged. 	<ul style="list-style-type: none"> Drill holes were geologically logged by industry standard methods, including lithology, alteration, mineralisation and weathering. RC Chip trays were photographed. The logging is qualitative in nature and of sufficient detail to support the current interpretation.
Sub-sampling techniques and sample preparation	<ul style="list-style-type: none"> If core, whether cut or sawn and whether quarter, half or all core taken. If non-core, whether riffled, tube sampled, rotary split, etc and whether sampled wet or dry. For all sample types, the nature, quality and appropriateness of the sample preparation technique. Quality control procedures adopted for all sub-sampling stages to maximise representivity of samples. Measures taken to ensure that the sampling is representative of the in-situ material collected, including for instance results for field duplicate/second-half sampling. Whether sample sizes are appropriate to the grain size of the material being sampled. 	<ul style="list-style-type: none"> RC holes were sampled over 1m intervals by cone-splitting. RC sampling was closely supervised by field geologists and included appropriate sampling methods, routine cleaning of splitters and cyclones, and rigs with sufficient capacity to provide generally dry, high recovery RC samples. Sample representivity monitoring included weighing RC samples and field duplicates. Assay samples were crushed to 90% passing 2mm, and pulverised to 95% passing 75 microns, with fire assay of 50g sub-samples. Assay quality monitoring included reference standards and inter-laboratory checks assays. Duplicate and blank samples were collected every 20 samples. Certified reference material samples were submitted to the laboratory every 100 samples. The project is at an early stage of evaluation and the suitability of sub-sampling methods and sub-sample sizes for all sampling groups has not been comprehensively established. The available data suggests that sampling procedures provide sufficiently

Criteria	JORC Code explanation	Commentary
		representative sub-samples for the current interpretation.
Quality of assay data and laboratory tests	<ul style="list-style-type: none"> <i>The nature, quality and appropriateness of the assaying and laboratory procedures used and whether the technique is considered partial or total.</i> <i>For geophysical tools, spectrometers, handheld XRF instruments, etc, the parameters used in determining the analysis including instrument make and model, reading times, calibrations factors applied and their derivation, etc.</i> <i>Nature of quality control procedures adopted (eg standards, blanks, duplicates, external laboratory checks) and whether acceptable levels of accuracy (ie lack of bias) and precision have been established.</i> 	<ul style="list-style-type: none"> Sampling included field duplicates, blind reference standards, field blanks and inter-laboratory checks confirm assay precision and accuracy with sufficient confidence for the current results. Samples were submitted to Nagrom Laboratories in Kelmscott, where they were prepared, processed and analysed via fire assay.
Verification of sampling and assaying	<ul style="list-style-type: none"> <i>The verification of significant intersections by either independent or alternative company personnel.</i> <i>The use of twinned holes.</i> <i>Documentation of primary data, data entry procedures, data verification, data storage (physical and electronic) protocols.</i> <i>Discuss any adjustment to assay data.</i> 	<ul style="list-style-type: none"> No independent geologists were engaged to verify results. Saturn Metals project geologists were supervised by the company's Exploration Manager. No adjustments were made to any assays of data. Logs were recorded by field geologists on hard copy sampling sheets which were entered into spreadsheets for merging into a central SQL database. Laboratory assay files were merged directly into the database. The project geologists routinely validate data when loading into the database.
Location of data points	<ul style="list-style-type: none"> <i>Accuracy and quality of surveys used to locate drill holes (collar and down-hole surveys), trenches, mine workings and other locations used in Mineral Resource estimation.</i> <i>Specification of the grid system used.</i> <i>Quality and adequacy of topographic control.</i> 	<ul style="list-style-type: none"> Collars are surveyed by hand held GPS, utilising GDA94, Zone 51. All RC holes were down-hole surveyed, by Gyro. A topographic triangulation was generated from drill hole collar surveys.
Data spacing and distribution	<ul style="list-style-type: none"> <i>Data spacing for reporting of Exploration Results.</i> <i>Whether the data spacing and distribution is sufficient to establish the degree of geological and grade continuity appropriate for the Mineral Resource and Ore Reserve estimation procedure(s) and classifications applied.</i> <i>Whether sample compositing has been applied.</i> 	<ul style="list-style-type: none"> Apollo Hill mineralisation has been tested by generally 30m spaced traverses of south- westerly inclined drill holes towards 225°. Across strike spacing is variable. The upper approximately 50m has been generally tested by 20-30m spaced holes, with deeper drilling ranging from locally 20m to commonly greater than 60m spacing.

Criteria	JORC Code explanation	Commentary
		<ul style="list-style-type: none"> The data spacing is sufficient to establish geological and grade and continuity.
Orientation of data in relation to geological structure	<ul style="list-style-type: none"> Whether the orientation of sampling achieves unbiased sampling of possible structures and the extent to which this is known, considering the deposit type. If the relationship between the drilling orientation and the orientation of key mineralised structures is considered to have introduced a sampling bias, this should be assessed and reported if material. 	<ul style="list-style-type: none"> Mineralised zones dip at an average of around 50° to the northeast. Detailed orientations of all short-scale mineralised features have not yet been confidently established. The majority of the drill holes were inclined at around 60° to the southwest.
Sample security	<ul style="list-style-type: none"> The measures taken to ensure sample security. 	<ul style="list-style-type: none"> Apollo Hill is in an isolated area, with little access by general public. Saturn's field sampling was supervised by Saturn geologists. Sub-samples selected for assaying were collected in heavy-duty polywoven plastic bags which were immediately sealed. These bags were delivered to the assay laboratory by independent couriers, Saturn employees or contractors. Results of field duplicates, blanks and reference material, and the general consistency of results between sampling phases provide confidence in the general reliability of the drilling data.
Audits or reviews	<ul style="list-style-type: none"> The results of any audits or reviews of sampling techniques and data. 	<ul style="list-style-type: none"> The competent person independently reviewed Saturn's sample quality information and database validity. These reviews included consistency checks within and between database tables and comparison of assay entries with original source records for Saturn's drilling. These reviews showed no material discrepancies. The competent person considers that the Apollo Hill drilling data has been sufficiently verified to provide an adequate basis for the current reporting of exploration results.

Section 2 Reporting of Exploration Results

(Criteria listed in the preceding section also apply to this section.)

Criteria	JORC Code explanation	Commentary
Mineral tenement and land tenure status	<ul style="list-style-type: none"> Type, reference name/number, location and ownership including agreements or material issues with third parties such as joint ventures, partnerships, overriding royalties, native title interests, historical sites, wilderness or national park and environmental settings. The security of the tenure held at the time of reporting along with any known impediments to obtaining a licence to operate in the area. 	<ul style="list-style-type: none"> The results are from the Saturn Metals Limited's Apollo Hill Project which lies within Exploration Licence E39/1198, M31/486 and M39/296. These tenements are wholly-owned by Saturn Metals Limited. These tenements, along with certain other tenure, are the subject of a 5% gross over-riding royalty (payable to HHM) on Apollo Hill gold production exceeding 1 million ounces. M39/296 is the subject of a \$1/t royalty (payable to a group of parties) on any production. The tenements are in good standing and no known impediments exist.
Exploration done by other parties	<ul style="list-style-type: none"> Acknowledgment and appraisal of exploration by other parties. 	<ul style="list-style-type: none"> Aircore, RC and diamond drilling by previous tenement holders provides around 82% of the estimation dataset. The data is primarily from RC and diamond drilling by Battle Mountain (33%), Apex Minerals (18%), Fimiston Mining (13%), Hampton Hill (12%). Homestake and MPI holes provide 5% and 1%, respectively.
Geology	<ul style="list-style-type: none"> Deposit type, geological setting and style of mineralisation. 	<ul style="list-style-type: none"> The Apollo Hill project comprises two deposits: The main Apollo Hill deposit in the north-west of the project area, and the smaller Ra Deposit in the south. Gold mineralisation is associated with quartz veins and carbonate-pyrite alteration along a steeply north-east dipping contact between felsic rocks to the west, and mafic dominated rocks to the east. The combined mineralised zones extend over a strike length of approximately 1.4km and have been intersected by drilling to approximately 350m depth. The depth of complete oxidation averages around 4m with depth to fresh rock averaging around 21m.

Criteria	JORC Code explanation	Commentary
Drill hole Information	<ul style="list-style-type: none"> A summary of all information material to the understanding of the exploration results including a tabulation of the following information for all Material drill holes: <ul style="list-style-type: none"> easting and northing of the drill hole collar elevation or RL (Reduced Level – elevation above sea level in metres) of the drill hole collar dip and azimuth of the hole down hole length and interception depth hole length. If the exclusion of this information is justified on the basis that the information is not Material and this exclusion does not detract from the understanding of the report, the Competent Person should clearly explain why this is the case. 	<ul style="list-style-type: none"> All relevant information material to the understanding of exploration results has been included within the body of the announcement or as appendices. No information has been excluded.
Data aggregation methods	<ul style="list-style-type: none"> In reporting Exploration Results, weighting averaging techniques, maximum and/or minimum grade truncations (eg cutting of high grades) and cut-off grades are usually Material and should be stated. Where aggregate intercepts incorporate short lengths of high grade results and longer lengths of low grade results, the procedure used for such aggregation should be stated and some typical examples of such aggregations should be shown in detail. The assumptions used for any reporting of metal equivalent values should be clearly stated. 	<ul style="list-style-type: none"> No top-cuts have been applied. No metal equivalent values are used for reporting exploration results.
Relationship between mineralisation widths and intercept lengths	<ul style="list-style-type: none"> These relationships are particularly important in the reporting of Exploration Results. If the geometry of the mineralisation with respect to the drill hole angle is known, its nature should be reported. If it is not known and only the down hole lengths are reported, there should be a clear statement to this effect (eg 'down hole length, true width not known'). 	<ul style="list-style-type: none"> True widths are generally estimated to be about 60% of the down-hole width.
Diagrams	<ul style="list-style-type: none"> Appropriate maps and sections (with scales) and tabulations of intercepts should be included for any significant discovery being reported These should include, but not be limited to a plan view of drill 	<ul style="list-style-type: none"> See diagrams included.

Criteria	JORC Code explanation	Commentary
	<i>hole collar locations and appropriate sectional views.</i>	
Balanced reporting	<ul style="list-style-type: none"> Where comprehensive reporting of all Exploration Results is not practicable, representative reporting of both low and high grades and/or widths should be practiced to avoid misleading reporting of Exploration Results. 	<ul style="list-style-type: none"> All results are reported.
Other substantive exploration data	<ul style="list-style-type: none"> Other exploration data, if meaningful and material, should be reported including (but not limited to): geological observations; geophysical survey results; geochemical survey results; bulk samples – size and method of treatment; metallurgical test results; bulk density, groundwater, geotechnical and rock characteristics; potential deleterious or contaminating substances. 	<ul style="list-style-type: none"> See release details.
Further work	<ul style="list-style-type: none"> The nature and scale of planned further work (eg tests for lateral extensions or depth extensions or large-scale step-out drilling). Diagrams clearly highlighting the areas of possible extensions, including the main geological interpretations and future drilling areas, provided this information is not commercially sensitive. 	<ul style="list-style-type: none"> Although not yet planned in detail, it is anticipated that further work will include infill, step out and twin-hole drilling. This work will be designed to improve confidence in, and test potential extensions to the current resource estimates.