

## EXCEPTIONALLY HIGH GRADES UP TO 93.2g/t GOLD RETURNED IN ADVANCE'S MAIDEN DIAMOND HOLE AT MYRTLEFORD

Advance Metals Limited (“**Advance**” or “**the Company**”) is pleased to provide initial assay results for its maiden drilling program at the Myrtleford Project in the Victorian Goldfields, Australia. Advance recently entered into a binding agreement with Serra Energy Metals Corp. (CSE:SEEM and OTCQB:ESVNF) to acquire an 80% interest via joint venture on the high grade Myrtleford and Beaufort Gold Projects<sup>1</sup>.

### HIGHLIGHTS – AMD001 returns **8.2m at 22.4g/t gold**

- Advance has now received the final assay results for the Company’s first diamond drill hole at the Happy Valley Prospect in the southeastern portion of the Myrtleford Gold Project in Victoria
- Hole AMD001 returned very strong gold mineralisation in multiple down hole zones, including:  
**AMD001            0.9 metres at 19.0g/t Au** from 157.8m  
**2.15 metres at 4.0g/t Au** from 177.8m  
**8.2 metres at 22.4g/t Au** from 186.0m  
**incl. 3.4 metres at 52.7g/t Au** from 186m
- These results place AMD001 amongst the highest-grade holes drilled in the region, with the intersection including individual assays up to **93.2g/t Au**.
- AMD001 passes approximately 20 metres up-dip from previous diamond hole HVD003 (11.5m at 160.4g/t Au<sup>1</sup>), **with the latest results defining a coherent ultra-high grade zone with potential extensions down-plunge and along strike**
- Results for subsequent diamond holes AMD002 and AMD003 remain pending, with both also previously reported to contain visible gold in multiple down-hole zones akin to AMD001<sup>2</sup>
- Drilling is also continuing on the fourth drill hole (AMD004) in the initial program at Happy Valley, targeting continuity of the system down plunge
- Results to date highlight the immense potential of the broader 13km-long Happy Valley trend, **with less than 1% of the total strike tested by drilling so far**



**Figure 1.** Abundant visible gold grains (lustrous yellow) in an irregular patch of sulphides from a cut section of AMD001 at 189.0m. This mineralisation occurs in a zone that graded **3.4 metres at 52.7g/t Au**.

<sup>1</sup>Details can be found in Advance Metals’ ASX release ‘Transformational gold and silver acquisitions in Victoria and Mexico’ dated 6/1/2025.

<sup>2</sup>See ASX AVM 18 March 2025 for full details. In relation to the disclosure of visible mineralisation, the Company cautions that visual estimates of mineral abundance should never be considered a proxy or substitute for laboratory analysis. Laboratory assay results are required to determine actual widths and grade of the visible mineralisation reported in preliminary geological logging. The Company will update the market when laboratory analytical results become available for these holes.

**Commenting on the high grade gold results from AMD001, Managing Director Adam McKinnon said:**  
*“These initial assay results are exactly what we were hoping for, demonstrating the presence of exceptional gold mineralisation across significant widths at Myrtleford. In combination with previous drilling, these results now define a coherent ultra-high grade zone at the Happy Valley Project with potential extensions down-plunge and along strike. With subsequent holes AMD002 and AMD003 also showing similar zones with visible gold mineralisation, there is every indication this high grade corridor is set to expand even further.”*

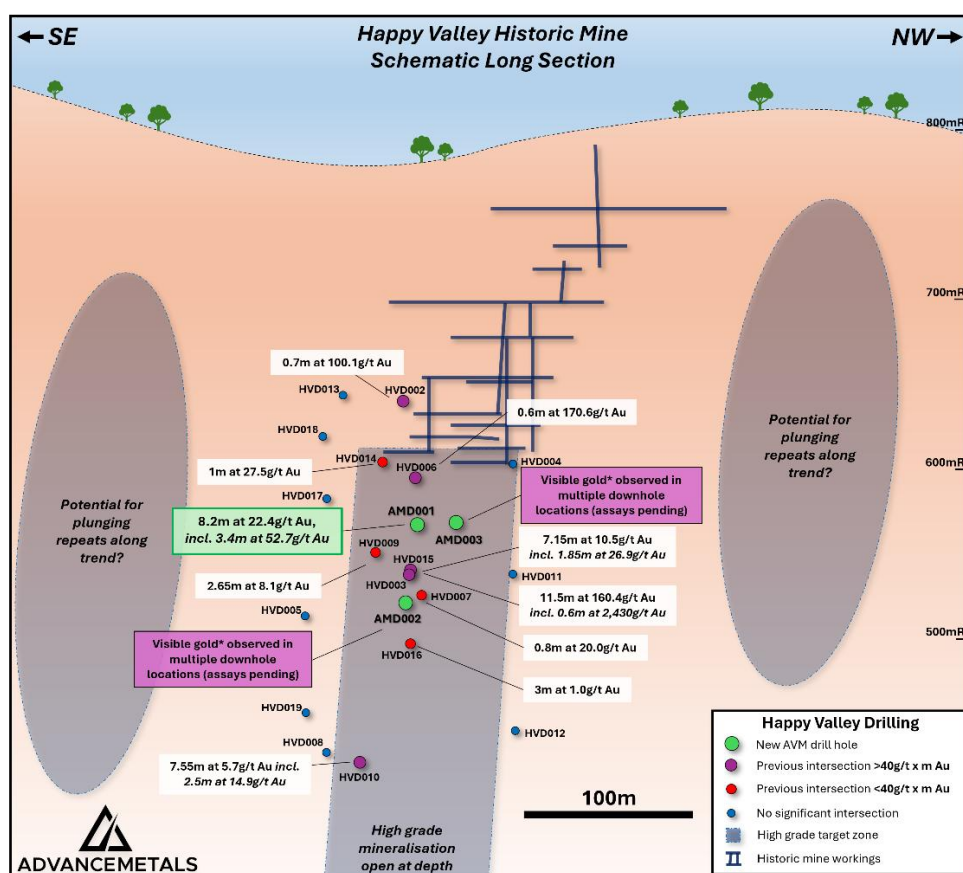
*“Given the exceptional tenor of the gold in AMD001 and the proximity to historic high grade workings, it’s hard not to draw comparisons with early exploration success at Southern Cross Gold’s Sunday Creek, which has turned into the most significant discovery in Victoria in recent years. Our technical team are continuing to evaluate the geometry and controls on the mineralisation and now firmly believe multiple prospects including Happy Valley across the Myrtleford Project area have similar potential.”*

### **First assays from Advance’s initial Myrtleford diamond program received**

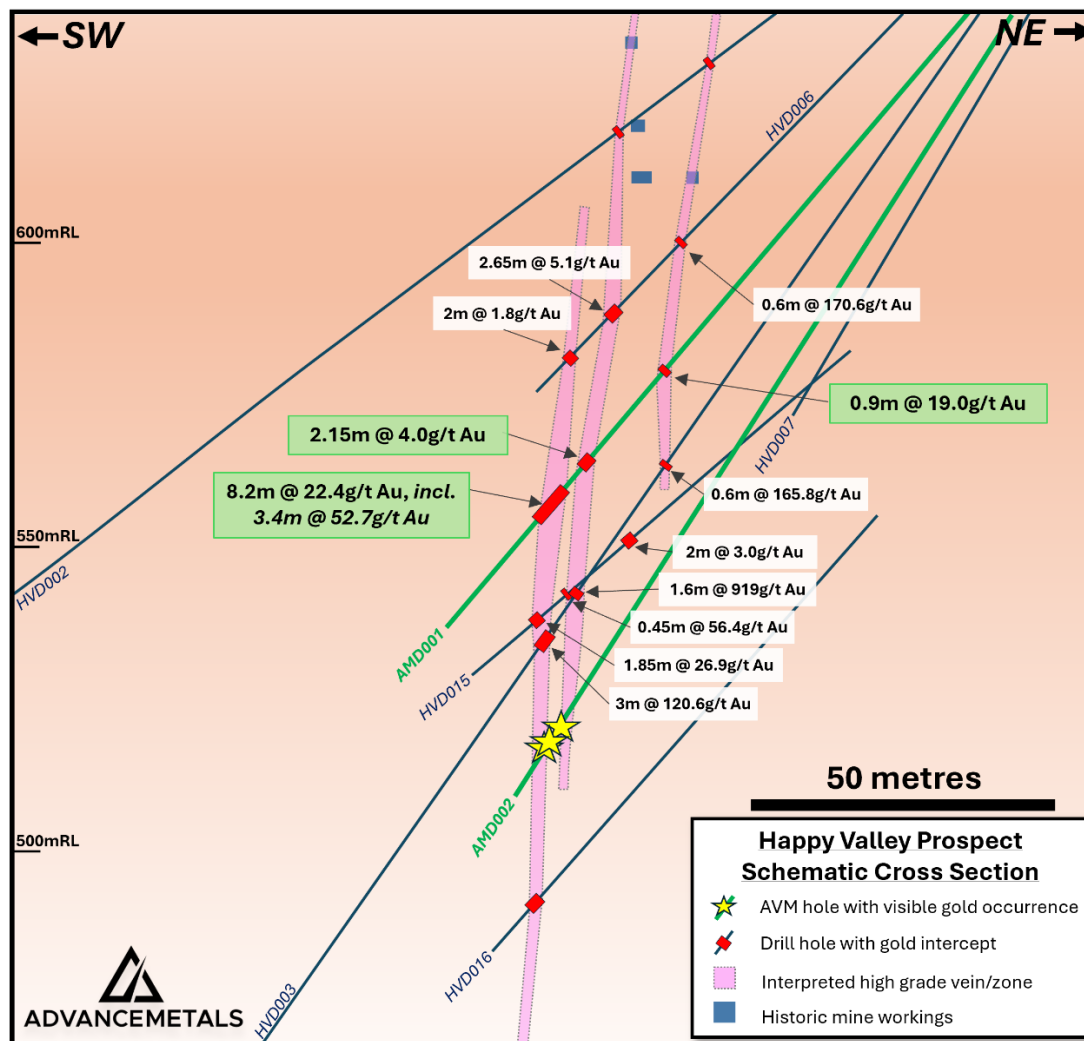
In mid-March the Company noted drilling within the Happy Valley Prospect at its Myrtleford Gold Project had intersected encouraging visual gold results from all three of the initial diamond holes completed (AMD001 to AMD003). Preliminary logging of these holes showed each contained multiple down-hole zones with strong quartz veining hosting minor sulphides and variable visible gold mineralisation<sup>2</sup> (Figures 1-3).

Analytical results for AMD001 have now been returned (**Table 2**), showing strong gold mineralisation in a number of down hole zones:

**AMD001**      **0.9 metres at 19.0g/t Au from 157.8m**  
**2.15 metres at 4.0g/t Au from 177.8m**  
**8.2 metres at 22.4g/t Au from 186.0m**  
**incl. 3.4 metres at 52.7g/t Au from 186m**



**Figure 2.** Schematic long section (looking southwest) showing previously drilling by Serra Energy Metals at Happy Valley (ASX AVM 6 January 2025) along with Advance’s recently drilled holes AMD001, AMD002 and AMD003.



**Figure 3.** Schematic cross section showing the location of recent diamond holes AMD001 and AMD002 (green) relative to previous drilling intersections at Happy Valley.

The lower high grade interval in AMD001 is interpreted to correlate with the “Old Happy Valley Lode”, which was historically mined higher in the system (**Figures 2 & 3**). Individual assay samples within this interval were consistently high grade, including **1.2 metres at 93.2g/t Au** from 186m, **0.7 metres at 27.2g/t Au** from 187.2m, **0.4 metres at 69.2g/t Au** from 188.4 metres, **0.6 metres 32.1g/t Au** from 188.6m.

AMD001 was drilled approximately 20 metres above previous hole Serra drill hole HVD003, which graded 11.5 metres at 160.4g/t Au<sup>1</sup>. These two holes define a coherent ultra-high grade zone with potential extensions down-plunge and along strike. Below HVD003, results are currently pending for Advance’s second drill hole (AMD002), which was also noted to host visible gold mineralisation in multiple down hole locations<sup>2</sup> (**Figure 3**), presenting a strong potential to extend this high grade zone even further. Equally as encouraging, the strongest visual gold mineralisation to date was observed in hole AMD003<sup>2</sup> (**Figure 4**), which was drilled immediately along strike to the northwest of AMD001 (**Figure 2**).

#### **Next Steps for Advance at Myrtleford**

- Logging and processing of holes AMD002 and AMD003 are now complete, with full assays expected mid-April 2025
- Drilling is currently continuing on Advance’s fourth and deepest hole to date at Happy Valley (AMD004), which is expected to test the down-plunge potential approximately 50 metres below and slightly along strike to the southeast of AMD002



- Following completion of hole AMD004 at Happy Valley, the diamond rig will move to the Twist Creek area in the northern portion of the Myrtleford Project, where a number of shallow targets will be tested over the coming month
- A program of mapping and rock chip sampling is continuing in multiple target areas across the Myrtleford project, with a particular focus along strike from the current drilling at Happy Valley
- Advance's technical team are currently designing a potential follow-up drilling program for the immediate Happy Valley prospect area, with targets to be fully defined once remaining assays are received for holes AMD002, AMD003 and AMD004



**Figure 4.** Composite image of a gold-bearing laminated quartz vein (left) from **AMD003**, with close-up images highlighting the visible gold<sup>2</sup> at 180.0 metres down hole (top right) and 180.9 metres down hole (bottom right). AMD003 was drilled immediately along strike to the northwest of the high grade mineralisation reported in this release from AMD001 (see **Figure 2**). Assays for AMD003 are currently pending, with full details in ASX AVM 18 March 2025.

### **Cautionary Note – Visual Estimates**

The Company stresses that the references above to visual or visible mineralisation relate specifically to the abundance of those minerals logged in the drill core and is not an estimate of metal grade for any interval. In relation to the disclosure of visible mineralisation, the Company cautions that visual estimates of mineral abundance should never be considered a proxy or substitute for laboratory analysis. Laboratory assay results are required to determine the widths and grade of the visible mineralisation reported in preliminary geological logging. The Company will update the market when laboratory analytical results become available. The reported intersections are down hole lengths and are not necessarily true width. Descriptions of the mineral amounts seen and logged in the core are qualitative only. Quantitative assays will be completed by ALS Laboratories, with the results for those intersections discussed in this release expected mid-April 2025.

### **Competent Person's Statement**

The information in this report concerning data and exploration results has been compiled and reviewed by Dr. Adam McKinnon, a Competent Person who is a Member of the Australian Institute of Mining and Metallurgy (AusIMM). Dr. McKinnon is the Managing Director of Advance Metals Limited and possesses the relevant expertise in the style of mineralisation, type of deposit under evaluation, and the associated activities, qualifying him as a Competent Person under the guidelines of the 2012 Edition of the 'Australasian Code for the Reporting of Exploration Results, Mineral Resources and Ore Reserves.' Dr. McKinnon has approved the inclusion of this information in the report in the form and context in which it appears.

### **Forward-Looking Statements**

Certain statements in this announcement relate to the future, including forward-looking statements relating to the Company and its business (including its projects). Forward-looking statements include, but are not limited to, statements concerning Advance Metals Limited planned exploration program(s) and other statements that are not historical facts. When used in this document, words such as "could," "plan," "estimate," "expect," "intend," "may", "potential," "should," and similar expressions are forward looking statements.

These forward-looking statements involve known and unknown risks, uncertainties, assumptions, and other important factors that could cause the actual results, performance or achievements of the Company to be materially different from future results, performance or achievements expressed or implied by such statements. Actual events or results may differ materially from the events or results expressed or implied in any forward-looking statement and deviations are both normal and to be expected. Neither the Company, its officers nor any other person gives any representation, assurance or guarantee that the events or other matters expressed or implied in any forward-looking statements will actually occur. You are cautioned not to place undue reliance on those statements.

### **For further information:**

Dr Adam McKinnon  
Managing Director and CEO  
Advance Metals Limited  
+61 (0) 411 028 958  
amckinnon@advancemetals.com.au  
www.advancemetals.com.au

This announcement has been authorised for release by the **Board of Advance Metals Limited**.

**Table 1.** Details for Advance Metals’ recent diamond drill holes reported as a part of this release (coordinates MGA94 Zone 55).

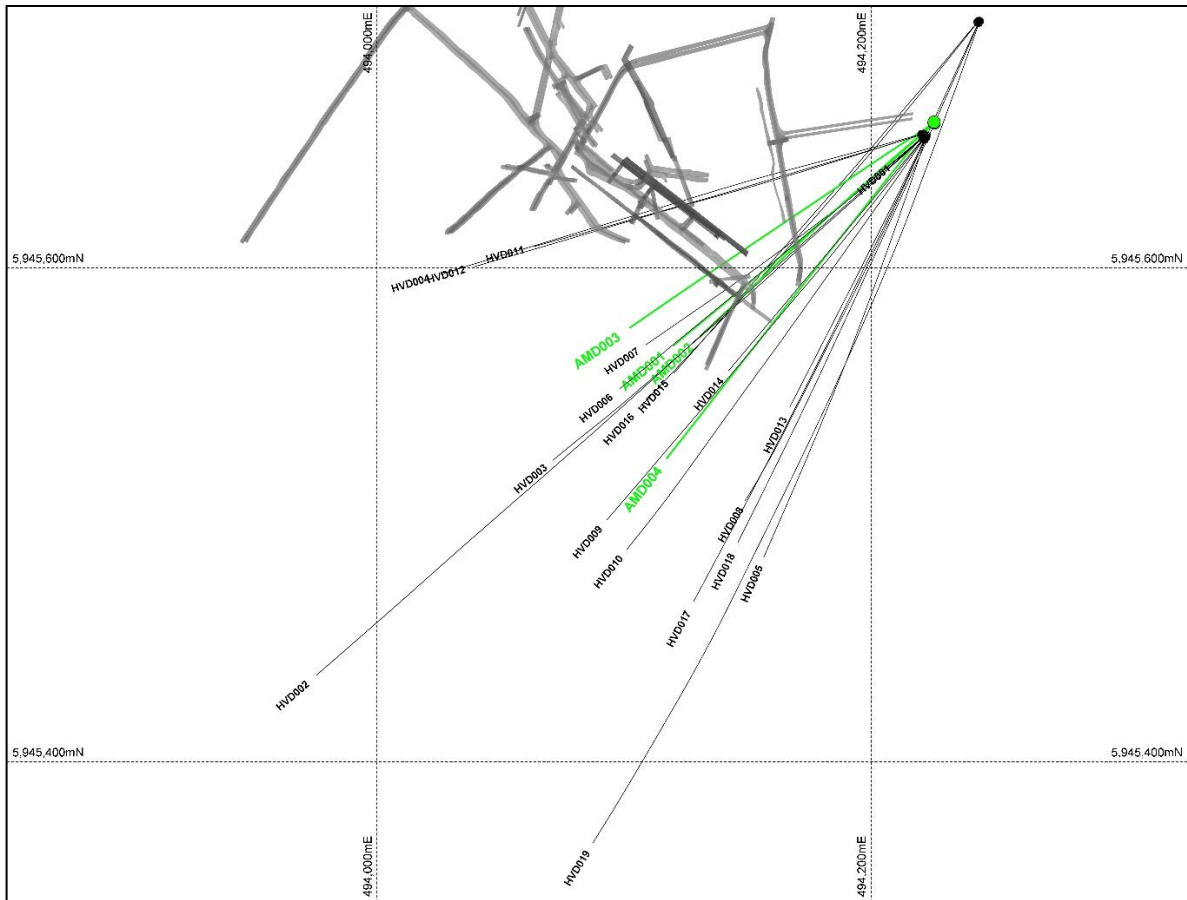
Prospect	Hole ID	Easting (m)	Northing (m)	RL (m)	Max Depth (m)	Dip	Azimuth (MGA)	Type
Happy Valley	AMD001	494225.5	5945658.6	699.7	214.3	-50.0 °	-228.0 °	HQ2 Diamond
Happy Valley	AMD002	494225.5	5945659.1	699.7	224.6	-56.0 °	-228.0 °	HQ2 Diamond
Happy Valley	AMD003	494225.3	5945658.7	699.7	224.5	-50.0 °	-237.0 °	HQ2 Diamond
Happy Valley	AMD004	494225.5	5945659.3	699.7	~297*	-59.0 °	-221.0 °	HQ2 Diamond

*\*Drilling currently in progress.*

**Table 2.** Significant assay results for recent diamond drilling reported as a part of this release. Significant intervals defined at a cut-off grade of 0.5g/t Au with up to two metres internal dilution.

Prospect	Hole ID	Interval (m)*	Au (g/t)	From (m)	Comments
Happy Valley	AMD001	0.9	19.0	157.8	Porpunkah Reef
		2.15	4.0	177.8	New Happy Valley Reef
		8.2	22.4	186.0	Old Happy Valley Reef
		3.4	52.7	186.0	Old Happy Valley Reef
	AMD002	Assays pending			
	AMD003	Assays pending			
	AMD004	Drilling in progress			

*\*Down hole interval, true widths ~70-80% of down hole widths for AMD001*



**Figure 5.** Plan view showing locations of recent Advance Metals holes AMD001-004 (green) in reference to previous drill holes (black) and historic workings (grey) at the Happy Valley Prospect at Myrtleford.

# 1 JORC Code, 2012 Edition – Table 1 report for the Myrtleford Gold Project

## 1.1 Section 1 Sampling Techniques and Data

(Criteria in this section apply to all succeeding sections.)

Criteria	JORC Code explanation	Commentary
Sampling techniques	<ul style="list-style-type: none"> <li>Nature and quality of sampling (eg cut channels, random chips, or specific specialised industry standard measurement tools appropriate to the minerals under investigation, such as down hole gamma sondes, or handheld XRF instruments, etc). These examples should not be taken as limiting the broad meaning of sampling.</li> <li>Include reference to measures taken to ensure sample representivity and the appropriate calibration of any measurement tools or systems used.</li> <li>Aspects of the determination of mineralisation that are Material to the Public Report.</li> <li>In cases where 'industry standard' work has been done this would be relatively simple (eg 'reverse circulation drilling was used to obtain 1 m samples from which 3 kg was pulverised to produce a 30 g charge for fire assay'). In other cases more explanation may be required, such as where there is coarse gold that has inherent sampling problems. Unusual commodities or mineralisation types (eg submarine nodules) may warrant disclosure of detailed information.</li> </ul>	<ul style="list-style-type: none"> <li>Diamond drilling techniques were used to obtain HQ-sized diamond core (63.5mm)</li> <li>The current program has employed HQ diamond core drilling with a standard tube in the zones of interest. Core recoveries are systematically recorded. All core drilled is oriented to the bottom of hole using an orientation tool</li> <li>Nominal one-metre half core samples were submitted to ALS Laboratories. Smaller intervals are occasionally employed to honour veining and geology. Assay standards and blanks are inserted into the batches as a part of the analytical procedures</li> <li>Each sample was assayed by Fire Assay (50g charge) and other accessory elements by ICP-AES</li> </ul>
Drilling techniques	<ul style="list-style-type: none"> <li>Drill type (eg core, reverse circulation, open-hole hammer, rotary air blast, auger, Bangka, sonic, etc) and details (eg core diameter, triple or standard tube, depth of diamond tails, face-sampling bit or other type, whether core is oriented and if so, by what method, etc).</li> </ul>	<ul style="list-style-type: none"> <li>The current program has employed HQ diamond core drilling with a standard tube in the zones of interest. Core recoveries are systematically recorded and are close to 100% for the current program. All core drilled is oriented to the bottom of hole using an orientation tool</li> </ul>
Drill sample recovery	<ul style="list-style-type: none"> <li>Method of recording and assessing core and chip sample recoveries and results assessed.</li> <li>Measures taken to maximise sample recovery and ensure representative nature of the samples.</li> <li>Whether a relationship exists between sample recovery and grade and whether sample bias may have occurred due to preferential loss/gain of fine/coarse material.</li> </ul>	<ul style="list-style-type: none"> <li>Diamond drill core recoveries were recorded during drilling and reconciled during the core processing and geological logging. There was a consistently high competency encountered in the rocks during drilling and no significant drill core lost occurred during drilling</li> <li>Diamond drill core is measured and marked after each drill run using blocks calibrating depth. Adjustment rig operating procedures as necessary drilling rate, run length and fluid</li> </ul>



Criteria	JORC Code explanation	Commentary
		<p><i>pressure is sometimes employed to maintain sample integrity</i></p> <ul style="list-style-type: none"> <li><i>No analysis to determine relationship between sample recovery and grades have been undertaken for this program</i></li> </ul>
Logging	<ul style="list-style-type: none"> <li><i>Whether core and chip samples have been geologically and geotechnically logged to a level of detail to support appropriate Mineral Resource estimation, mining studies and metallurgical studies.</i></li> <li><i>Whether logging is qualitative or quantitative in nature. Core (or costean, channel, etc) photography.</i></li> <li><i>The total length and percentage of the relevant intersections logged.</i></li> </ul>	<ul style="list-style-type: none"> <li><i>Systematic geological logging is being undertaken for this program. Data collected includes nature and extent of lithology, relationship between lithology and mineralisation, identification of nature and extent of alteration and mineralisation, and structural data such as bedding, cleavage, veins, faults etc including alpha &amp; beta angles</i></li> <li><i>Core logging is generally qualitative, although some estimates of veining and sulphides contents are semi-quantitative. All diamond core is photographed</i></li> <li><i>100% of core drilled in this program has been logged</i></li> </ul>
Sub-sampling techniques and sample preparation	<ul style="list-style-type: none"> <li><i>If core, whether cut or sawn and whether quarter, half or all core taken.</i></li> <li><i>If non-core, whether riffled, tube sampled, rotary split, etc and whether sampled wet or dry.</i></li> <li><i>For all sample types, the nature, quality and appropriateness of the sample preparation technique.</i></li> <li><i>Quality control procedures adopted for all sub-sampling stages to maximise representivity of samples.</i></li> <li><i>Measures taken to ensure that the sampling is representative of the in situ material collected, including for instance results for field duplicate/second-half sampling.</i></li> <li><i>Whether sample sizes are appropriate to the grain size of the material being sampled.</i></li> </ul>	<ul style="list-style-type: none"> <li><i>The diamond core reported in this release was half-core sampled using a diamond saw</i></li> <li><i>No further sub-sampling was conducted in the field</i></li> <li><i>Sample sizes are considered appropriate for style and type of mineralisation being investigated</i></li> <li><i>Core was consistently cut near the orientation line, with the same side sampled in all cases to maintain representivity</i></li> </ul>
Quality of assay data and laboratory tests	<ul style="list-style-type: none"> <li><i>The nature, quality and appropriateness of the assaying and laboratory procedures used and whether the technique is considered partial or total.</i></li> <li><i>For geophysical tools, spectrometers, handheld XRF instruments, etc, the parameters used in determining the analysis including instrument make and model, reading times, calibrations factors applied and their derivation, etc.</i></li> <li><i>Nature of quality control procedures adopted (eg standards, blanks, duplicates, external laboratory checks) and whether acceptable levels of accuracy (ie lack of bias) and precision have been established.</i></li> </ul>	<ul style="list-style-type: none"> <li><i>Samples were crushed to a nominal 70% &lt;2 mm and pulverized to 85% &lt;75 µm. A 50g charge was taken for gold determination by fire assay. An accessory multielement suit was also determined using 4-acid digestion with ICP-AES.</i></li> <li><i>Use of Certified Reference Materials (CRMs): Multiple standards appropriate to the style of mineralisation were employed from reputable providers such as OREAS and Geostats.</i></li> </ul>



Criteria	JORC Code explanation	Commentary
Verification of sampling and assaying	<ul style="list-style-type: none"> <li>The verification of significant intersections by either independent or alternative company personnel.</li> <li>The use of twinned holes.</li> <li>Documentation of primary data, data entry procedures, data verification, data storage (physical and electronic) protocols.</li> <li>Discuss any adjustment to assay data.</li> </ul>	<ul style="list-style-type: none"> <li>Significant intersections reported in this release were confirmed by at least two Company personnel</li> <li>Advance has not employed any twin holes in the program to date</li> <li>Data was collected in the field via written notes. This data was then entered into a digital form by the same person for entry into the database</li> <li>Location data was obtained by handheld GPS</li> <li>No adjustments were made to the data</li> <li>The data was stored electronically in Microsoft Access and linked using unique identifiers for each sample. Data were also verified against hardcopy assay certificates for quality control purposes.</li> </ul>
Location of data points	<ul style="list-style-type: none"> <li>Accuracy and quality of surveys used to locate drill holes (collar and down-hole surveys), trenches, mine workings and other locations used in Mineral Resource estimation.</li> <li>Specification of the grid system used.</li> <li>Quality and adequacy of topographic control.</li> </ul>	<ul style="list-style-type: none"> <li>Location data was obtained by handheld GPS</li> <li>The mapping and survey data for the project area were plotted using Map Grid of Australia (GDA94), Zone 55</li> <li>Handheld GPS is considered appropriate for the style of sampling being undertaken</li> </ul>
Data spacing and distribution	<ul style="list-style-type: none"> <li>Data spacing for reporting of Exploration Results.</li> <li>Whether the data spacing and distribution is sufficient to establish the degree of geological and grade continuity appropriate for the Mineral Resource and Ore Reserve estimation procedure(s) and classifications applied.</li> <li>Whether sample compositing has been applied.</li> </ul>	<ul style="list-style-type: none"> <li>The drilling spacing is considered appropriate for early-stage exploration</li> <li>The site does not currently have a Mineral Resource or Ore Reserve Estimate</li> <li>No sample compositing was applied</li> </ul>
Orientation of data in relation to geological structure	<ul style="list-style-type: none"> <li>Whether the orientation of sampling achieves unbiased sampling of possible structures and the extent to which this is known, considering the deposit type.</li> <li>If the relationship between the drilling orientation and the orientation of key mineralised structures is considered to have introduced a sampling bias, this should be assessed and reported if material.</li> </ul>	<ul style="list-style-type: none"> <li>Where possible, drill holes are designed at a high angle to the interpreted structures.</li> <li>The sampling orientation is not believed to have introduced a bias</li> </ul>

Criteria	JORC Code explanation	Commentary
Sample security	<ul style="list-style-type: none"> <li>The measures taken to ensure sample security.</li> </ul>	<ul style="list-style-type: none"> <li>Sample logging and cutting was conducted at the Company's secure site near Beechworth, Victoria</li> <li>Samples were packaged on pallets and securely wrapped for delivery to the laboratory</li> </ul>
Audits or reviews	<ul style="list-style-type: none"> <li>The results of any audits or reviews of sampling techniques</li> </ul>	<ul style="list-style-type: none"> <li>No audits or reviews conducted at this stage</li> </ul>

## 1.2 Section 2 Reporting of Exploration Results

(Criteria listed in the preceding section also apply to this section.)

Criteria	JORC Code explanation	Commentary
Mineral tenement and land tenure status	<ul style="list-style-type: none"> <li>Type, reference name/number, location and ownership including agreements or material issues with third parties such as joint ventures, partnerships, overriding royalties, native title interests, historical sites, wilderness or national park and environmental settings.</li> <li>The security of the tenure held at the time of reporting along with any known impediments to obtaining a licence to operate in the area.</li> </ul>	<ul style="list-style-type: none"> <li>The Myrtleford Project comprises two exploration licences (EL006724 &amp; EL007670) 100% owned by Serra Energy Metals covering an area of 472km<sup>2</sup>. EL006724 was granted on 3rd July 2020 for an initial period of five years, with an option to seek a renewal for an additional period. EL007670 was granted on 9th May 2023 for an initial period of five years, with an option to seek a renewal for an additional period.</li> <li>In January 2025, Advance Metals Limited executed and agreement to acquire an 80% interest in the Project, and is currently the operator of the tenements</li> <li>There is a 1% NSR on the property with option to buy back 0.5% for C \$3.3M</li> <li>The licence requires compliance with the Victorian Minerals Resources (Sustainable Development) Act 1990 (MRSDA)</li> <li>The exploration area contains no significant urban sites and is composed of state forest, softwood plantations, and grazing lands, providing accessible exploration ground</li> <li>The licence area contains several historical mine sites with adits and shafts that discharge water. The Victorian Government requires that, if disturbed, water from these sites must meet Environmental Protection Authority (EPA) water quality standard</li> </ul>

Criteria	JORC Code explanation	Commentary
Exploration done by other parties	<ul style="list-style-type: none"> <li>Acknowledgment and appraisal of exploration by other parties.</li> </ul>	<p><u>Various Companies 1965 - 1982</u></p> <ul style="list-style-type: none"> <li>Minor exploration works by various companies including North Broken Hill Limited, MDF Pty Ltd, Minefields Exploration NL, Dampier Mining and Freeport Australia.</li> </ul> <p><u>Dart Mining NL</u></p> <ul style="list-style-type: none"> <li>2007-2011</li> <li>Conducted literature reviews, mapping, and modeling, focusing on Reduced Intrusive Related Gold (RIRG) mineralisation</li> </ul> <p><u>Golden Deeps Ltd</u></p> <ul style="list-style-type: none"> <li>2010-2015 (EL5272) and 2009-2015 (EL5239)</li> <li>Investigated reef, stockwork, and shear-hosted gold mineralisation. Activities included literature research, mapping, and geochemical analysis</li> </ul> <p><u>Northern Mine Ventures Pty Ltd</u></p> <ul style="list-style-type: none"> <li>2003-2015 (EL4697)</li> <li>Focused on alluvial and reef gold as well as molybdenum mineralisation. Conducted literature reviews, mapping, and geochemical analysis</li> </ul> <p><u>Silkfield Holdings Pty Ltd</u></p> <ul style="list-style-type: none"> <li>2005-2015 (EL4866)</li> <li>Focused on molybdenum mineralisation, undertaking sampling at areas distant from the lease boundary</li> </ul> <p><u>Beechworth Resources Pty Ltd</u></p> <ul style="list-style-type: none"> <li>2012-2017 (EL5418)</li> <li>Exploration for disseminated, porphyry-style, or stockwork mineralisation. Conducted literature reviews, mapping, and sampling</li> </ul> <p><u>E79 Resources Pty Ltd (current holder)</u></p> <ul style="list-style-type: none"> <li>2020-present</li> <li>Jointly held by Dusko Ljubojevic, Martin Pawlitschek, and Mining Projects Accelerator Pty Ltd. E79 Resources Corp. has agreed to acquire 100% of the property through the purchase of E79 Resources Pty Ltd</li> </ul>

Criteria	JORC Code explanation	Commentary
Geology	<ul style="list-style-type: none"> <li>Deposit type, geological setting and style of mineralisation.</li> </ul>	<ul style="list-style-type: none"> <li>The project is situated at the boundary of Early and Late Devonian magmatism, surrounded by Devonian-aged granite bodies, and influenced by the Lachlan Orogeny. This tectonic activity caused significant folding, faulting, and the development of an "oroclinal bend" structure, similar to the Bendigo Zone's geological environment.</li> <li>The area is characterized by multiple deformation events, with F1 folds, slaty cleavage, upright anticlinoria, and synclinoria. These features, combined with dextral transpression from the Benambran and Tabberabberan orogenies, played a key role in the emplacement and deformation of mineralised zones.</li> <li>The main lithological unit is the Ordovician Pinnak Sandstone of the Adaminaby Group, a turbiditic sequence that has undergone metamorphism. It is overlain by Pleistocene Shepparton Formation gravels and Holocene alluvial deposits, with scree slopes near the Murmungee Granite metamorphic aureole.</li> <li>Gold is primarily hosted in shear- or fault-controlled quartz veins (fissure, saddle, and spurry reefs) within the Pinnack Sandstone, ranging from less than 1 m to 12 m in width. These veins often contain up to 2% sulphides, including pyrite, arsenopyrite, galena, and sphalerite.</li> <li>Mineralisation is structurally controlled, with steeply dipping, northwesterly striking quartz reefs associated with dextral and reverse faulting. Stockwork-style mineralisation, involving interconnected quartz veins, is present but typically has lower gold grades.</li> <li>Gold is also associated with alluvial deposits from weathered reef material. Supergene enrichment further concentrates gold in regolith profiles through weathering and groundwater interaction.</li> </ul>
Drill hole Information	<ul style="list-style-type: none"> <li>A summary of all information material to the understanding of the exploration results including a tabulation of the following information for all Material drill holes: <ul style="list-style-type: none"> <li>easting and northing of the drill hole collar</li> <li>elevation or RL (Reduced Level – elevation above sea level in metres) of the drill hole collar</li> <li>dip and azimuth of the hole</li> <li>down hole length and interception depth</li> </ul> </li> </ul>	<ul style="list-style-type: none"> <li>Relevant drill hole data is given in Table 1 in the body of the report</li> </ul>



Criteria	JORC Code explanation	Commentary
	<ul style="list-style-type: none"> <li>○ hole length.</li> <li>• If the exclusion of this information is justified on the basis that the information is not Material and this exclusion does not detract from the understanding of the report, the Competent Person should clearly explain why this is the case.</li> </ul>	
Data aggregation methods	<ul style="list-style-type: none"> <li>• In reporting Exploration Results, weighting averaging techniques, maximum and/or minimum grade truncations (eg cutting of high grades) and cut-off grades are usually Material and should be stated.</li> <li>• Where aggregate intercepts incorporate short lengths of high grade results and longer lengths of low grade results, the procedure used for such aggregation should be stated and some typical examples of such aggregations should be shown in detail.</li> <li>• The assumptions used for any reporting of metal equivalent values should be clearly stated.</li> </ul>	<ul style="list-style-type: none"> <li>• A nominal 0.5g/t gold cut-off was employed to define significant intersections in this release</li> <li>• No cutting grade cutting was applied</li> <li>• Higher grade zones that are included within the larger intersections are also given in the significant intersection table to illustrate the grade distribution</li> <li>• No metal equivalents reported</li> </ul>
Relationship between mineralisation widths and intercept lengths	<ul style="list-style-type: none"> <li>• These relationships are particularly important in the reporting of Exploration Results.</li> <li>• If the geometry of the mineralisation with respect to the drill hole angle is known, its nature should be reported.</li> <li>• If it is not known and only the down hole lengths are reported, there should be a clear statement to this effect (eg 'down hole length, true width not known').</li> </ul>	<ul style="list-style-type: none"> <li>• Given the orientation of the drilling to the interpreted mineralised structures, the true width of the intersections reported in this release are expected to be between 70-80% of the down hole widths</li> </ul>
Diagrams	<ul style="list-style-type: none"> <li>• Appropriate maps and sections (with scales) and tabulations of intercepts should be included for any significant discovery being reported These should include, but not be limited to a plan view of drill hole collar locations and appropriate sectional views.</li> </ul>	<ul style="list-style-type: none"> <li>• Refer to main body of announcement</li> </ul>
Balanced reporting	<ul style="list-style-type: none"> <li>• Where comprehensive reporting of all Exploration Results is not practicable, representative reporting of both low and high grades and/or widths should be practiced to avoid misleading reporting of Exploration Results.</li> </ul>	<ul style="list-style-type: none"> <li>• Current result are shown in relation to all other nearby drilling at the prospect in the relevant plan, cross section and long section.</li> </ul>
Other substantive exploration data	<ul style="list-style-type: none"> <li>• Other exploration data, if meaningful and material, should be reported including (but not limited to): geological observations; geophysical survey results; geochemical survey results; bulk samples – size and method of treatment; metallurgical test results; bulk density, groundwater, geotechnical and rock characteristics; potential deleterious or contaminating substances.</li> </ul>	<ul style="list-style-type: none"> <li>• Refer to main body of announcement</li> </ul>

Criteria	JORC Code explanation	Commentary
<i>Further work</i>	<ul style="list-style-type: none"> <li><i>The nature and scale of planned further work (eg tests for lateral extensions or depth extensions or large-scale step-out drilling).</i></li> <li><i>Diagrams clearly highlighting the areas of possible extensions, including the main geological interpretations and future drilling areas, provided this information is not commercially sensitive.</i></li> </ul>	<ul style="list-style-type: none"> <li><i>Refer to main body of announcement</i></li> </ul>

