

ASX Announcement

14 November 2019

Apollo Hill step-out drilling delivers; Hanging-wall success continues

Highlights:

- Drilling results from exploration step-outs to the east and down dip include:
 - **5m @ 5.19g/t Au from 44m** within **16m @ 1.69g/t Au from 44m** – AHRC0269;
 - **11m @ 1.2g/t Au from 180m** within **25m @ 0.61g/t Au from 166m** – AHRC0244;
 - **7m @ 2.13g/t Au from 64m** – AHRC0242.
- Results from AHRC0269 (**5m @ 5.19 from 44m**) have identified a new gold lode to the north-east of Apollo Hill, outside the existing resource completed in October 2019, Figure 2.
- Results from AHRC0244 (**11m @ 1.2g/t Au from 180m**) highlight the continuity of the hanging wall lodes down dip, 80m below the current hanging wall resource, and adjacent to the main lode, Figure 3. Drilling remains open.
- Intersections continue to improve the ratio of mineralised material to non-mineralised material in the Resource area.
- Assays pending for a further 28 holes drilled to date, Figure 1.
- Drilling continues to aggressively follow up on these and other recently returned high grade intersections including:
 - **17m @ 2.96g/t Au from 41m** - including:
10m @ 4.82g/t Au from 45m, which also includes;
4m @ 9.31g/t Au from 51m - AHRC0221^b;
 - **7m @ 6.59g/t Au from 34m** contained within **35m @ 1.67g/t from 34m** - AHRC0223^b;
 - **8m @ 4.26g/t Au from 16m** - AHRC0239^b.

Saturn Metals (ASX:STN) ("Saturn", "the Company") is pleased to announce the latest results from the reverse circulation (RC) drilling program underway at its 100%-owned Apollo Hill Gold Project, 60km from Leonora in the Western Australian goldfields.

Saturn is currently drilling up to 13,000 metres at Apollo Hill as part of the Company's efforts to rapidly expand the newly discovered high-grade hanging wall zones and to grow the Project's recently upgraded 781,000oz Mineral Resource¹. Drilling is focussed on extending mineralisation.

Results, planned drilling locations, and program concepts are illustrated in Figures 1 and 3.

Saturn Managing Director Ian Bamborough said: *"Results continue to confirm our thesis for step change growth immediately adjacent to the Apollo Hill main lode. We are extremely encouraged by the widening gold system, further higher-grade intersections, and the extension of the hanging wall system down dip. We are pressing ahead with our accelerated exploration effort as our confidence in the geological picture and gold system grows"*.

The Company will provide further information from the exploration and resource drilling at Apollo Hill as results are received and analysed. Tables 1 and 2 list hole details and significant drill results.

¹Details of the Mineral Resource which currently stands at 24.5 million tonnes grading 1.0 g/t gold for 781,000 ounces and a breakdown by category are presented in Table 1a (page 8 of this document) along with the associated Competent Persons statement and details of the original ASX report that this information was originally published in.

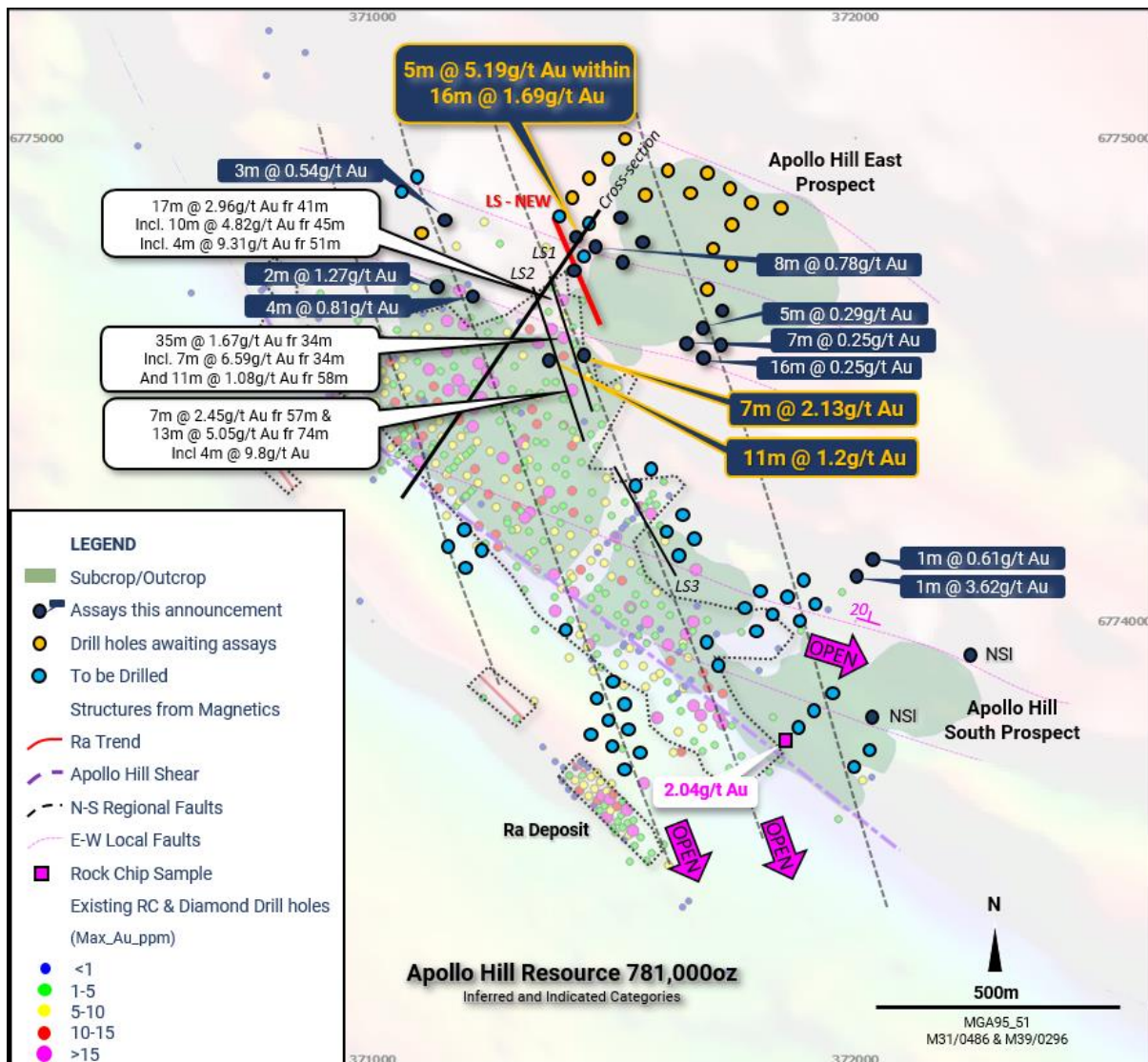


Figure 1 – RC drill results and planned drilling relative to the published resource and recent Hanging-wall drilling. Drilling seeks to develop mineralisation primarily in the shallow Hanging-wall splays where recent higher grades have been returned. Recently collected magnetic data and rock chipping have provided a new targeting for expansionary drilling immediately east of and adjacent to the new hanging-wall lodes. ^bDrilling results depicted originally reported in fuller context in Saturn Metals Limited ASX Announcements, Quarterly Reports and Prospectus - as published on the Company's website. Saturn Metals Limited confirms that it is not aware of any new information or data that materially affects the information on results noted.

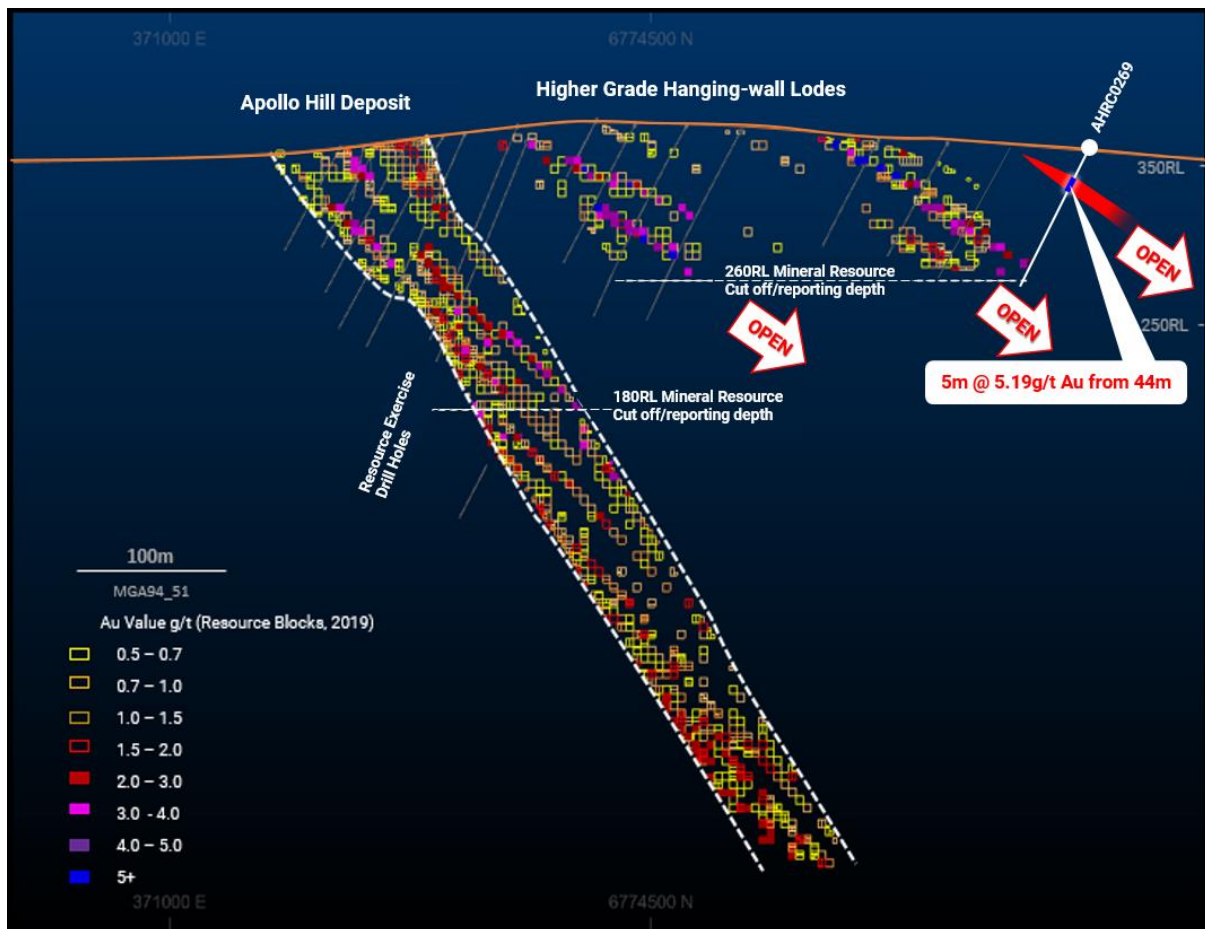


Figure 2 – Oblique block model cross-section +/-30m showing gold grade and block locations; higher grades developing in the Hanging-wall zones, and location of latest drill result. Grid GDA94_Z51.

^(b) This diagram contains exploration results and historic exploration results as originally reported in fuller context in Saturn Metals Limited ASX Announcement (24/10/2019, 14/10/ 019, 30/09/2019, 15/08/2019, 30/07/2019, and 23/07/2019), - as published on the Company's website. Saturn Metals Limited confirms that it is not aware of any new information or data that materially affects the information on results noted.

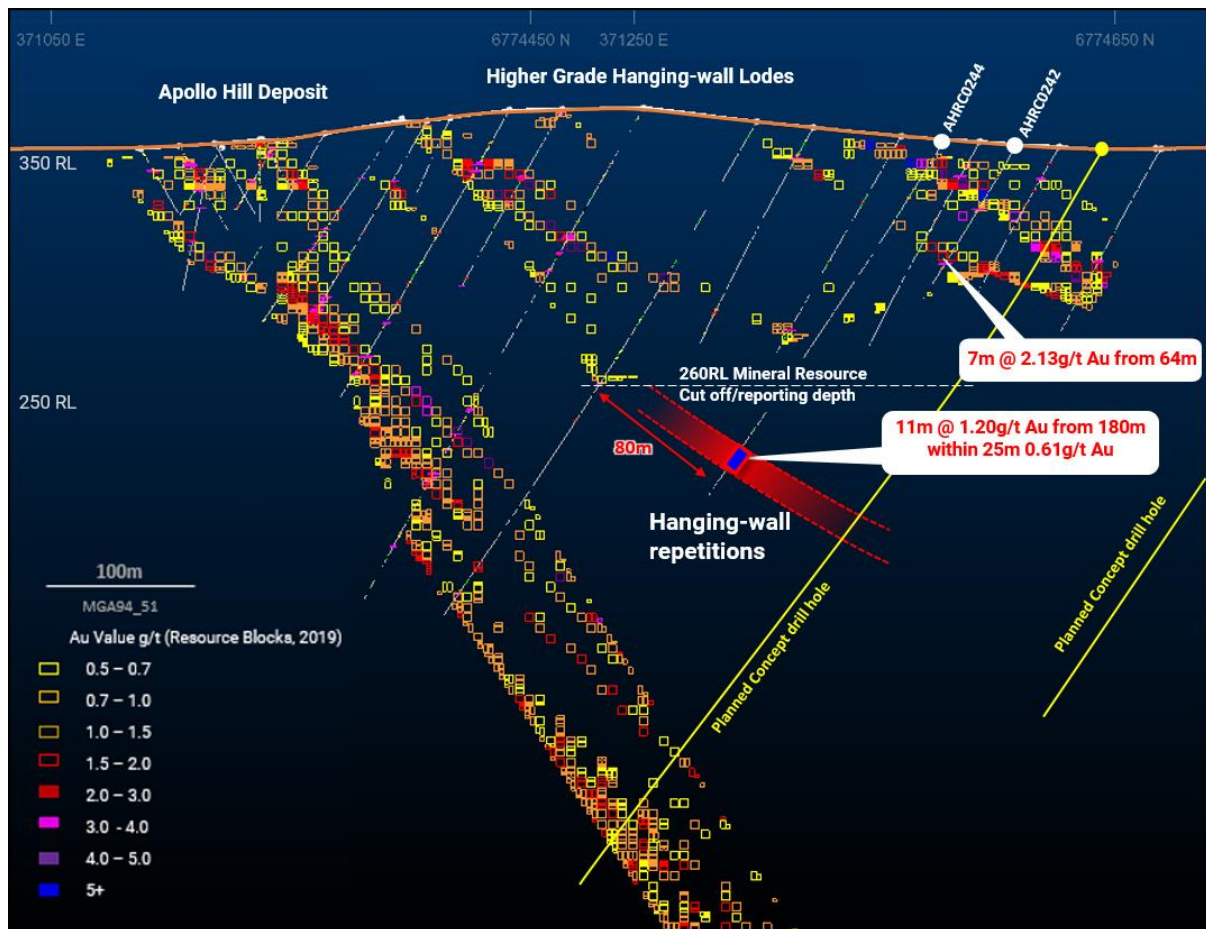


Figure 3 – Block model cross-section +/-30m showing gold grade and block locations; higher grades developing in the Hanging-wall zones, and location of latest drill results down dip. Grid GDA94_Z51. Planned drilling illustrated.

^(b) This diagram contains exploration results and historic exploration results as originally reported in fuller context in Saturn Metals Limited ASX Announcements on (24/10/2019, 14/10/ 019, 30/09/2019, 15/08/2019, 30/07/2019, and 23/07/2019), - as published on the Company's website. Saturn Metals Limited confirms that it is not aware of any new information or data that materially affects the information on results noted.

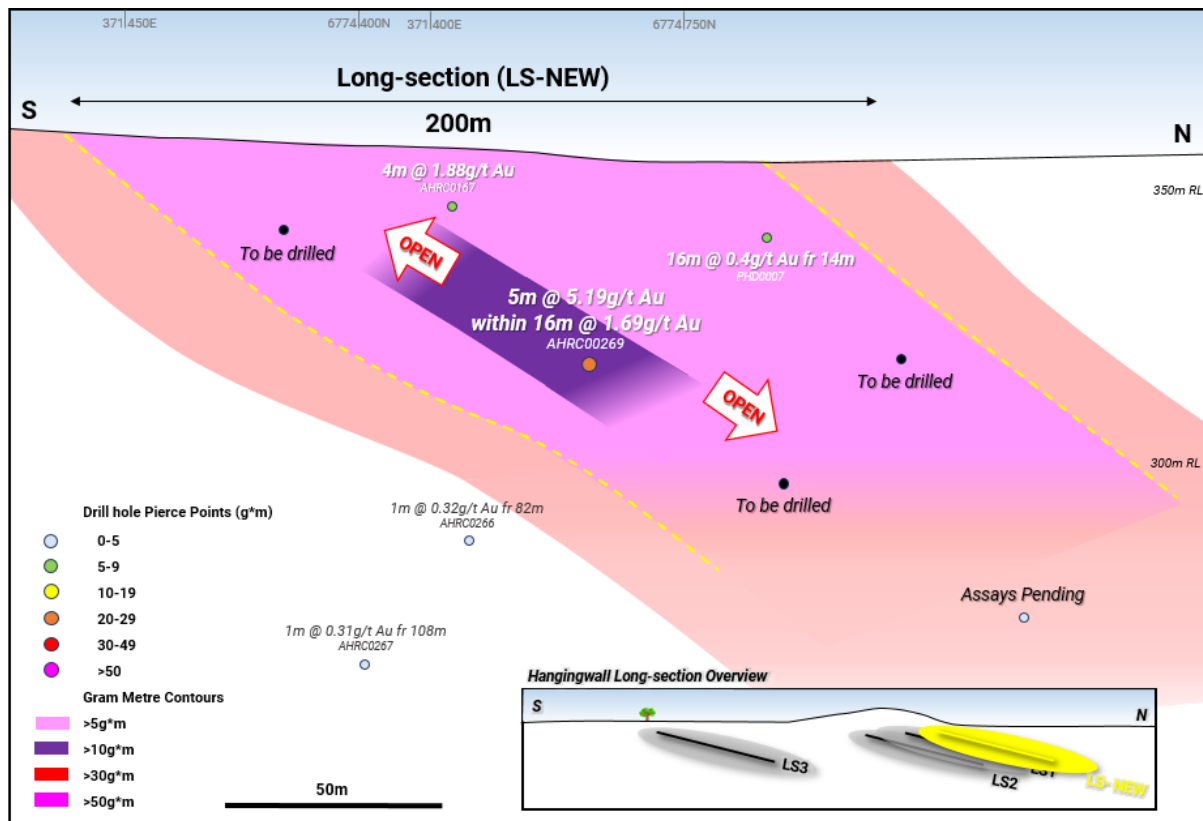


Figure 4 – Interpreted long-section of new hanging-wall lode (LS-New) showing high grade plunging shoot. Location of long-section illustrated in plan view, Figure 1. Grid GDA94_51S. Holes for which assays remain pending and planned drilling also illustrated.

(b) This diagram contains exploration results and historic exploration results as originally reported in fuller context in Saturn Metals Limited ASX Announcement (24/10/2019, 14/10/ 019, 30/09/2019, 15/08/2019, 30/07/2019, and 23/07/2019), - as published on the Company's website. Saturn Metals Limited confirms that it is not aware of any new information or data that materially affects the information on results noted.

I. Bamborough

IAN BAMBOROUGH
Managing Director
Saturn Metals Limited
08 6424 8695

LUKE FORRESTAL
Associate Director
Media and Capital Partners
0411 479 144

Hole #	Down Hole Width (m)	Grade (g/t Au)	From (m)
AHRC0236	NSI		
AHRC0238	1	0.61	121
AHRC0240	1	3.62	78
AHRC0241	NSI		
AHRC0242	23	0.47	16
Incl.	8	0.96	31
	7	2.13	64
AHRC0244	20	0.48	14
Incl.	8	0.80	14
	6	0.31	131
	25	0.61	166
Incl.	11	1.20	180
AHRC0245	4	0.81	68
AHRC0246	2	1.27	84
	1	0.62	128
AHRC0247	16	0.25	36
Incl.	4	0.55	36
AHRC0248	7	0.25	37
AHRC0249	5	0.29	41
	5	0.24	55
AHRC0250	22	0.12	16
AHRC0251	4	0.20	90
AHRC0266	8	0.78	38
AHRC0267	13	0.21	45
AHRC0268	28	0.12	53
AHRC0269	16	1.69	44
Incl.	5	5.19	44
AHRC0270	23	0.39	51
Incl.	12	0.64	59
AHRC0272	3	0.54	32
AHRC0273	4	0.37	19
	7	0.46	55
	3	0.22	80

Table 1 - Significant drill results.

Hole #	Easting	Northing	RL (m)	Dip°	Azi°	Depth (m)
AHRC0236	372 305	6773 875	351	-50	225	123
AHRC0238	372 046	6774 135	352	-60	225	138
AHRC0240	372 006	6774 095	352	-60	225	104
AHRC0241	372 048	6773 788	351	-60	225	119
AHRC0242	371 392	6774 606	362	-60	225	88
AHRC0244	371 355	6774 593	364	-60	225	208
AHRC0245	371 140	6774 673	365	-60	225	158
AHRC0246	371 090	6774 666	365	-60	225	134
AHRC0247	371 664	6774 525	352	-60	225	114
AHRC0248	371 624	6774 568	354	-60	225	94
AHRC0249	371 710	6774 568	353	-60	225	142
AHRC0250	371 674	6774 616	355	-60	225	117
AHRC0251	371 726	6774 671	356	-60	225	102
AHRC0266	371 438	6774 759	358	-60	225	147
AHRC0267	371 460	6774 739	360	-60	225	132
AHRC0268	371 410	6774 680	358	-60	225	87
AHRC0269	371 397	6774 757	356	-60	225	122
AHRC0270	371 390	6774 704	357	-60	225	82
AHRC0272	371 080	6774 741	360	-60	225	97
AHRC0273	371 559	6774 418	351	-60	225	97

Table 2. Completed RC holes – reported hole details, MGA94_Z51.

Apollo Hill is located ~60km south-east of Leonora in the heart of WA's goldfields region (Figure 5). The Project is surrounded by excellent infrastructure and several significant gold deposits and operations.

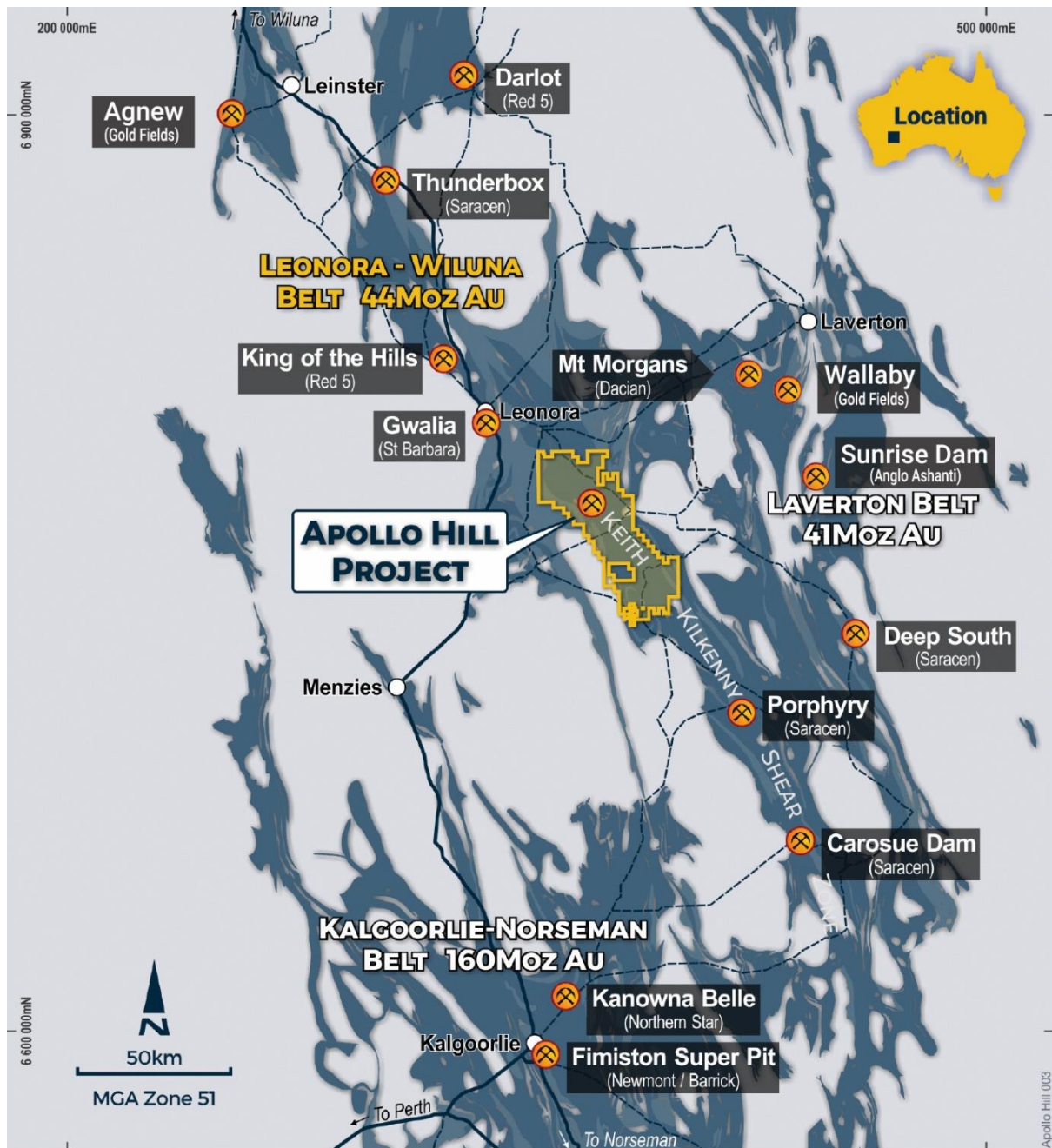


Figure 5 - Apollo Hill location, Saturn Metals' tenements and surrounding gold deposits, gold endowment and infrastructure.

Competent Persons Statement Resource

¹The information for the Mineral Resource included in this report is extracted from the report entitled (Apollo Hill Gold Resource Upgraded to 781,000oz) created on 14 October 2019 and is available to view on the Saturn Metals Limited website. Saturn Metals Limited confirms that it is not aware of any new information or data that materially affects the information included in the original market announcement and, in the case of estimates of Mineral Resources or Ore Reserves, that all material assumptions and technical parameters underpinning the estimates in the relevant market announcement continue to apply and have not materially changed. Saturn Metals Ltd confirms that the form and context in which the Competent Person's findings are presented have not been materially modified from the original market announcement.

Lower Cut-off Grade (Au g/t)	Oxidation state	Measured			Indicated			Inferred			Mill Total		
		Tonnes (Mtonnes)	Au (g/t)	Au Metal (KOzs)	Tonnes (Mtonnes)	Au (g/t)	Au Metal (KOzs)	Tonnes (Mtonnes)	Au (g/t)	Au Metal (KOzs)	Tonnes (Mtonnes)	Au (g/t)	Au Metal (KOzs)
0.5	Oxide	0	0	0	0.2	1.0	7	0.4	0.9	11	0.6	0.9	18
	Transitional	0	0	0	2.1	1.0	70	1.5	1.0	47	3.6	1.0	117
	Fresh	0	0	0	6.9	1.0	221	13.4	1.0	425	20.3	1.0	646
	Total	0	0	0	9.2	1.0	298	15.3	1.0	483	24.5	1.0	781

¹ The models are reported above nominal RLs (180 mRL – this is approximately 180 metres below surface (mbs) (accounting for localised variations in topography) for the Apollo Hill main zone and 260 mRL or 90mbs for Ra the deposit and the Apollo Hill Hanging-walls – refer to reporting RL's illustrated in Figures 1, 3 and 4) and nominal 0.5 g/t Au lower cut-off grade for all material types. Saturn Metals advise that there is no material depletion by mining within the model area. Estimation is by localised multiple indicator kriging for Apollo Hill zone and the Apollo Hill Hanging-wall zone; estimation of Ra zone used restricted ordinary kriging due to limited data. The model assumes a 5mE by 12.5mN by 5mRL Selective Mining Unit (SMU) for selective open pit mining. The final models are SMU models and incorporate internal dilution to the scale of the SMU. Technically the models do not account for mining related edge dilution and ore loss. These parameters should be considered during the mining study as being dependent on grade control, equipment and mining configurations including drilling and blasting. Classification is according to JORC Code Mineral Resource categories. Totals may vary due to rounded figures.

Table 1a. October 2019 Mineral Resource Statement; 0.5g/t Au Cut-off above various RL's by oxidation domain

Competent Persons Statement Exploration

The information in this report that relates to exploration targets and exploration results is based on information compiled by Ian Bamborough, a Competent Person who is a Member of The Australian Institute of Geoscientists. Ian Bamborough is a fulltime employee and Director of the Company, in addition to being a shareholder in the Company. Ian Bamborough has sufficient experience that is relevant to the style of mineralisation and type of deposit under consideration and to the activity being undertaken to qualify as a Competent Person as defined in the 2012 Edition of the 'Australasian Code for Reporting of Exploration Results, Mineral Resources and Ore Reserves'. Ian Bamborough consents to the inclusion in the report of the matters based on his information in the form and context in which it appears.

^bThis document contains exploration results and historic exploration results as originally reported in fuller context in Saturn Metals Limited ASX Announcements, Quarterly Reports and Prospectus - as published on the Company's website. Saturn Metals Limited confirms that it is not aware of any new information or data that materially affects the information on results noted. Announcement dates to refer to include but are not limited to 24/10/2019, 14/10/2019, 30/09/2019, 15/08/2019, 31/07/2019, 30/07/2019, 23/07/2019, 19/06/2019, 05/06/2019, 28/05/2019, 02/05/2019, 29/04/2019, 16/04/2019, 29/04/2019, 14/03/2019, 22/05/2018, 4/2/2019, 30/01/2019, 30/08/2018 and 06/08/2018.

JORC Code, 2012 Edition – Table 1 - Apollo Hill Exploration Area

Section 1 Sampling Techniques and Data

(Criteria in this section apply to the Apollo Hill and Ra exploration area and all succeeding sections.)

Criteria	JORC Code explanation	Commentary
Sampling techniques	<ul style="list-style-type: none"> Nature and quality of sampling (eg cut channels, random chips, or specific specialised industry standard measurement tools appropriate to the minerals under investigation, such as down hole gamma sondes, or handheld XRF instruments, etc). These examples should not be taken as limiting the broad meaning of sampling. Include reference to measures taken to ensure sample representivity and the appropriate calibration of any measurement tools or systems used. Aspects of the determination of mineralisation that are Material to the Public Report. In cases where 'industry standard' work has been done this would be relatively simple (eg 'reverse circulation drilling was used to obtain 1 m samples from which 3 kg was pulverised to produce a 30 g charge for fire assay'). In other cases more explanation may be required, such as where there is coarse gold that has inherent sampling problems. Unusual commodities or mineralisation types (eg submarine nodules) may warrant disclosure of detailed information. 	<ul style="list-style-type: none"> Measures taken to ensure the representivity RC sampling include close supervision by geologists, use of appropriate sub-sampling methods, routine cleaning of splitters and cyclones, and RC rigs with sufficient capacity to provide generally dry, reasonable recovery samples. Information available to demonstrate sample representivity includes RC sample weights, sample recovery, sample consistency, field duplicates, standards and blanks. RC holes were sampled over 1m intervals by cone-splitting. RC samples were analysed by NAGROM in Kelmscott or ALS in Kalgoorlie. Samples were oven dried and crushed to 90% passing 2mm, and pulverised to 95% passing 106 microns, with analysis by 50g fire assay. Rock Chips taken with a geological hammer into labelled calico bags were assayed by ALS in Kalgoorlie/Perth for gold and multi-element geochemistry using the AuME-TL44 method (50g Trace Au FA = Multi Element PKG). Samples were crushed to a nominal 3mm then pulverised to 95% passing 75 micron. Gold grades returned greater than 1g/t Au were re-assayed using the Au-AROR44 method.
Drilling techniques	<ul style="list-style-type: none"> Drill type (eg core, reverse circulation, open-hole hammer, rotary air blast, auger, Bangka, sonic, etc) and details (eg core diameter, triple or standard tube, depth of diamond tails, face-sampling bit or other type, whether core is oriented and if so, by what method, etc). 	<ul style="list-style-type: none"> Reverse Circulation (RC) RC drilling used generally 5.5 " face- sampling bits.
Drill sample recovery	<ul style="list-style-type: none"> Method of recording and assessing core and chip sample recoveries and results assessed. Measures taken to maximise sample recovery and ensure representative nature of the samples. Whether a relationship exists between sample recovery and grade and whether sample bias may have occurred due to preferential loss/gain of fine/coarse material. 	<ul style="list-style-type: none"> Sample recovery was visually estimated by volume for each 1m bulk sample bag, and recorded digitally in the sample database. Very little variation was observed. Measures taken to maximise recovery for RC drilling included use of face sampling bits and drilling rigs of sufficient capacity to provide generally dry, high recovery samples. RC sample weights indicate an average recovery of 85-95% and were dry. The cone splitter was regularly cleaned with compressed air at the completion of each rod.
Logging	<ul style="list-style-type: none"> Whether core and chip samples have been geologically and geotechnically logged to a level of detail to support appropriate Mineral Resource estimation, mining studies and metallurgical studies. Whether logging is qualitative or quantitative in nature. Core (or costean, channel, etc) photography. The total length and percentage of the relevant intersections logged. 	<ul style="list-style-type: none"> Drill holes were geologically logged by industry standard methods, including lithology, alteration, mineralisation and weathering. RC Chip trays were photographed. The logging is qualitative in nature and of sufficient detail to support the current interpretation.
Sub-sampling techniques and sample preparation	<ul style="list-style-type: none"> If core, whether cut or sawn and whether quarter, half or all core taken. If non-core, whether riffled, tube sampled, rotary split, etc and whether sampled wet or dry. For all sample types, the nature, quality and appropriateness of the sample preparation technique. 	<ul style="list-style-type: none"> RC holes were sampled over 1m intervals by cone-splitting. RC sampling was closely supervised by field geologists and included appropriate sampling methods, routine cleaning of splitters and cyclones, and rigs with sufficient capacity to provide generally dry, high recovery RC samples. Sample representivity monitoring included weighing RC

Criteria	JORC Code explanation	Commentary
	<ul style="list-style-type: none"> Quality control procedures adopted for all sub-sampling stages to maximise representivity of samples. Measures taken to ensure that the sampling is representative of the in-situ material collected, including for instance results for field duplicate/second-half sampling. Whether sample sizes are appropriate to the grain size of the material being sampled. 	<ul style="list-style-type: none"> samples and field duplicates. Assay samples were crushed to 90% passing 2mm, and pulverised to 95% passing 75 microns, with fire assay of 50g sub-samples. Assay quality monitoring included reference standards and inter-laboratory checks assays. Duplicate and blank samples were collected every 20 samples. Certified reference material samples were submitted to the laboratory every 100 samples. The project is at an early stage of evaluation and the suitability of sub-sampling methods and sub-sample sizes for all sampling groups has not been comprehensively established. The available data suggests that sampling procedures provide sufficiently representative sub-samples for the current interpretation.
Quality of assay data and laboratory tests	<ul style="list-style-type: none"> The nature, quality and appropriateness of the assaying and laboratory procedures used and whether the technique is considered partial or total. For geophysical tools, spectrometers, handheld XRF instruments, etc, the parameters used in determining the analysis including instrument make and model, reading times, calibrations factors applied and their derivation, etc. Nature of quality control procedures adopted (eg standards, blanks, duplicates, external laboratory checks) and whether acceptable levels of accuracy (ie lack of bias) and precision have been established. 	<ul style="list-style-type: none"> Sampling included field duplicates, blind reference standards, field blanks and inter-laboratory checks confirm assay precision and accuracy with sufficient confidence for the current results. Samples were submitted to ALS Laboratories in Kalgoorlie, where they were prepared, processed and analysed via fire assay.
Verification of sampling and assaying	<ul style="list-style-type: none"> The verification of significant intersections by either independent or alternative company personnel. The use of twinned holes. Documentation of primary data, data entry procedures, data verification, data storage (physical and electronic) protocols. Discuss any adjustment to assay data. 	<ul style="list-style-type: none"> No independent geologists were engaged to verify results. Saturn Metals project geologists were supervised by the company's Exploration Manager. No adjustments were made to any assays of data. Logs were recorded by field geologists on hard copy sampling sheets which were entered into spreadsheets for merging into a central SQL database. Laboratory assay files were merged directly into the database. The project geologists routinely validate data when loading into the database.
Location of data points	<ul style="list-style-type: none"> Accuracy and quality of surveys used to locate drill holes (collar and down-hole surveys), trenches, mine workings and other locations used in Mineral Resource estimation. Specification of the grid system used. Quality and adequacy of topographic control. 	<ul style="list-style-type: none"> Collars are surveyed by hand held GPS, utilising GDA94, Zone 51. All RC holes were down-hole surveyed, by Gyro. A topographic triangulation was generated from drill hole collar surveys.
Data spacing and distribution	<ul style="list-style-type: none"> Data spacing for reporting of Exploration Results. Whether the data spacing and distribution is sufficient to establish the degree of geological and grade continuity appropriate for the Mineral Resource and Ore Reserve estimation procedure(s) and classifications applied. Whether sample compositing has been applied. 	<ul style="list-style-type: none"> Apollo Hill mineralisation has been tested by generally 30m spaced traverses of south-westerly inclined drill holes towards 225°. Across strike spacing is variable. The upper approximately 50m has been generally tested by 20-30m spaced holes, with deeper drilling ranging from locally 20m to commonly greater than 60m spacing. The data spacing is sufficient to establish geological and grade and continuity.
Orientation of data in relation to geological structure	<ul style="list-style-type: none"> Whether the orientation of sampling achieves unbiased sampling of possible structures and the extent to which this is known, considering the deposit type. If the relationship between the drilling orientation and the orientation of key mineralised structures is considered to have introduced a sampling bias, this should be assessed and reported if material. 	<ul style="list-style-type: none"> Mineralised zones dip at an average of around 50° to the northeast. Detailed orientations of all short-scale mineralised features have not yet been confidently established. The majority of the drill holes were inclined at around 60° to the southwest. All hole details for reported results are noted in Table 2 of this announcement.
Sample security	<ul style="list-style-type: none"> The measures taken to ensure sample security. 	<ul style="list-style-type: none"> Apollo Hill is in an isolated area, with little access by general public. Saturn's field sampling was supervised by Saturn geologists. Sub-samples selected for assaying were

Criteria	JORC Code explanation	Commentary
		<p>collected in heavy- duty polywoven plastic bags which were immediately sealed. These bags were delivered to the assay laboratory by independent couriers, Saturn employees or contractors.</p> <ul style="list-style-type: none"> Results of field duplicates, blanks and reference material, and the general consistency of results between sampling phases provide confidence in the general reliability of the drilling data.
Audits or reviews	<ul style="list-style-type: none"> The results of any audits or reviews of sampling techniques and data. 	<ul style="list-style-type: none"> The competent person independently reviewed Saturn's sample quality information and database validity. These reviews included consistency checks within and between database tables and comparison of assay entries with original source records for Saturn's drilling. These reviews showed no material discrepancies. The competent person considers that the Apollo Hill drilling data has been sufficiently verified to provide an adequate basis for the current reporting of exploration results.

Section 2 Reporting of Exploration Results

(Criteria listed in the preceding section also apply to this section.)

Criteria	JORC Code explanation	Commentary
Mineral tenement and land tenure status	<ul style="list-style-type: none"> Type, reference name/number, location and ownership including agreements or material issues with third parties such as joint ventures, partnerships, overriding royalties, native title interests, historical sites, wilderness or national park and environmental settings. The security of the tenure held at the time of reporting along with any known impediments to obtaining a licence to operate in the area. 	<ul style="list-style-type: none"> The results are from the Saturn Metals Limited's Apollo Hill Project which lies within Exploration Licence E39/1198, M31/486 and M39/296. These tenements are wholly-owned by Saturn Metals Limited. These tenements, along with certain other tenure, are the subject of a 5% gross over-riding royalty (payable to HHM) on Apollo Hill gold production exceeding 1 million ounces. M39/296 is the subject of a \$1/t royalty (payable to a group of parties) on any production. The tenements are in good standing and no known impediments exist.
Exploration done by other parties	<ul style="list-style-type: none"> Acknowledgment and appraisal of exploration by other parties. 	<ul style="list-style-type: none"> Aircore, RC and diamond drilling by previous tenement holders provides around 82% of the estimation dataset. The data is primarily from RC and diamond drilling by Battle Mountain (33%), Apex Minerals (18%), Fimiston Mining (13%), Hampton Hill (12%). Homestake and MPI holes provide 5% and 1%, respectively.
Geology	<ul style="list-style-type: none"> Deposit type, geological setting and style of mineralisation. 	<ul style="list-style-type: none"> The Apollo Hill project comprises two deposits: The main Apollo Hill deposit in the north-west of the project area, and the smaller Ra Deposit in the south. Gold mineralisation is associated with quartz veins and carbonate-pyrite alteration along a steeply north-east dipping contact between felsic rocks to the west, and mafic dominated rocks to the east. The combined mineralised zones extend over a strike length of approximately 1.4km and have been intersected by drilling to approximately 350m depth. The depth of complete oxidation averages around 4m with depth to fresh rock averaging around 21m.
Drill hole Information	<ul style="list-style-type: none"> A summary of all information material to the understanding of the exploration results including a tabulation of the following information for all Material drill holes: <ul style="list-style-type: none"> easting and northing of the drill hole collar elevation or RL (Reduced Level – elevation above sea level in metres) of the drill hole 	<ul style="list-style-type: none"> All relevant information material to the understanding of exploration results has been included within the body of the announcement or as appendices. No information has been excluded.

Criteria	JORC Code explanation	Commentary
	<ul style="list-style-type: none"> collar dip and azimuth of the hole down hole length and interception depth hole length. If the exclusion of this information is justified on the basis that the information is not Material and this exclusion does not detract from the understanding of the report, the Competent Person should clearly explain why this is the case. 	
Data aggregation methods	<ul style="list-style-type: none"> In reporting Exploration Results, weighting averaging techniques, maximum and/or minimum grade truncations (eg cutting of high grades) and cut-off grades are usually Material and should be stated. Where aggregate intercepts incorporate short lengths of high grade results and longer lengths of low grade results, the procedure used for such aggregation should be stated and some typical examples of such aggregations should be shown in detail. The assumptions used for any reporting of metal equivalent values should be clearly stated. 	<ul style="list-style-type: none"> No top-cuts have been applied. No metal equivalent values are used for reporting exploration results.
Relationship between mineralisation widths and intercept lengths	<ul style="list-style-type: none"> These relationships are particularly important in the reporting of Exploration Results. If the geometry of the mineralisation with respect to the drill hole angle is known, its nature should be reported. If it is not known and only the down hole lengths are reported, there should be a clear statement to this effect (eg 'down hole length, true width not known'). 	<ul style="list-style-type: none"> True widths are generally estimated to be about 60% of the down-hole width.
Diagrams	<ul style="list-style-type: none"> Appropriate maps and sections (with scales) and tabulations of intercepts should be included for any significant discovery being reported These should include, but not be limited to a plan view of drill hole collar locations and appropriate sectional views. 	<ul style="list-style-type: none"> See diagrams included.
Balanced reporting	<ul style="list-style-type: none"> Where comprehensive reporting of all Exploration Results is not practicable, representative reporting of both low and high grades and/or widths should be practiced to avoid misleading reporting of Exploration Results. 	<ul style="list-style-type: none"> All results are reported.
Other substantive exploration data	<ul style="list-style-type: none"> Other exploration data, if meaningful and material, should be reported including (but not limited to): geological observations; geophysical survey results; geochemical survey results; bulk samples – size and method of treatment; metallurgical test results; bulk density, groundwater, geotechnical and rock characteristics; potential deleterious or contaminating substances. 	<ul style="list-style-type: none"> See release details.
Further work	<ul style="list-style-type: none"> The nature and scale of planned further work (eg tests for lateral extensions or depth extensions or large-scale step-out drilling). Diagrams clearly highlighting the areas of possible extensions, including the main geological interpretations and future drilling areas, provided this information is not commercially sensitive. 	<ul style="list-style-type: none"> Although not yet planned in detail, it is anticipated that further work will include infill, step out and twin-hole drilling. This work will be designed to improve confidence in, and test potential extensions to the current resource estimates.