

11 October 2011

The Company Announcements Platform
ASX Limited

By E-lodgement

SPECTACULAR HIGH GRADE GOLD INTERSECTION BULLANT MINE

HIGHLIGHTS:

- **DRILLING RESULTS CONTINUE TO INTERSECT EAST LODGE MINERALISATION**
- **HIGH GRADE INTERCEPTS INCLUDE:**
 - **4.60 metres @ 26.19g/t Au from 12.70 metres**
 - **3.30 metres @ 4.43g/t Au from 113.7 metres**
 - **2.97 metres @ 3.95g/t Au from 102.99 metres**
 - **1.67 metres @ 3.51g/t Au from 78.73 metres**
- **THE RESULTS DEMONSTRATE FURTHER EXTENSIONS AT DEPTH OF THE EAST LODGE**
- **DRILLING IS CURRENTLY CONTINUING AND FURTHER EXTENSIONAL DRILLING IS PLANNED**
- **RESOURCE MODELING CURRENTLY UNDERWAY TO TIE IN ALL RECENT DRILL RESULTS**

The company is pleased to report that recent drilling of the “East Lode” at the Bullant gold mine has intersected a spectacular high grade gold zone of 4.6m @ 26.19g/t Au. This intersection represents the best drill assay result the Company has achieved at the Bullant gold project since its acquisition in April 2011. The results highlight that the East Lode which runs parallel to the “Main Lode” at the Bullant mine contains areas of high grade gold mineralisation which sits within very close proximity to the current Bullant mine workings. It represents an exceptional mining target for our team.

Results to date indicate that the East Lode mineralisation is persisting at depth and is not closed off. An initial resource for the East Lode will be released this current quarter and it is expected with further drilling (currently underway) that the resource will continue to grow.

Other results from the Stage 2 underground diamond drilling program include 3.3m @ 4.43g/t Au and 2.97m @ 3.95g/t Au (see table 1 over page). Further Stage 2 and Stage 3 drilling results will be released as they are received, reviewed and prepared for release.

KALGOORLIE MINING COMPANY LIMITED

Suite 1, 346 Barker Road, Subiaco WA 6008 | PO Box 846, Subiaco WA 6904

Telephone: (618) 6382 7200 | Fax: (618) 6382 3777

ACN: 091 009 559 | ABN: 44 091 009 559 | Email: enquiries@kalmining.com.au | Website: www.kalmining.com.au

The Company looks forward to updating shareholders further as we strive to generate rapid shareholder wealth through development, production and exploration of the Bullant Gold Project.



Chris Daws
Chief Executive Officer

The information in this report that relates to information compiled by Mr. Trevor Eddie (BSc Geol) who is a member of the Australasian Institute of Mining and Metallurgy ("AusIMM") and is bound by and follows the Institute's codes and recommended practices. Mr. Eddie is a full-time employee of Kalgoorlie Mining Company Bullant Pty Ltd (Kalgoorlie Mining Ltd). He has sufficient experience which is relevant to the styles of mineralisation and types of deposits under consideration and to the activities being undertaken to qualify as a Competent Person as defined in the 2004 Edition of the "Australasian Code for Reporting of Exploration Results, Mineral Resources and Ore Reserves". Mr. Eddie consents to the inclusion on this information in the form and context in which it appears in this report.

About Kalgoorlie Mining Company Limited

Kalgoorlie Mining Company Limited (KMC) is a rapidly developing resource development and exploration Company based in Perth, Western Australia and with regional offices in Kalgoorlie, Western Australia. KMC is currently developing the Bullant Gold Mine located 70km North West of Kalgoorlie, Western Australia with first gold ore sales achieved in August 2011.

www.kalmining.com.au

APPENDIX 1

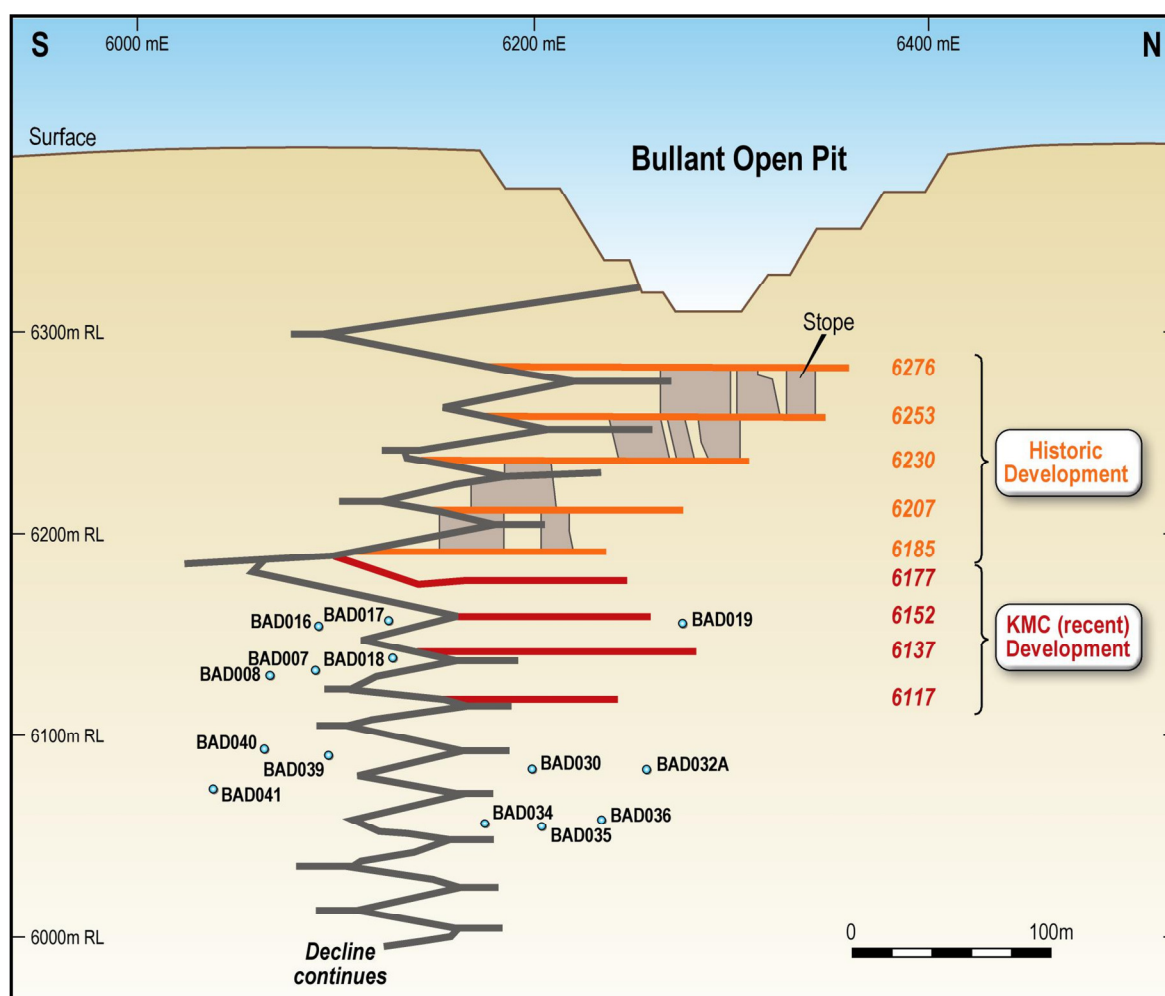


Figure1: Long-section showing drilling hole locations Stage 2 East Lode and current mine development.

KALGOORLIE MINING COMPANY LIMITED

Suite 1, 346 Barker Road, Subiaco WA 6008 | PO Box 846, Subiaco WA 6904

Telephone: (618) 6382 7200 | Fax: (618) 6382 3777

ACN: 091 009 559 | ABN: 44 091 009 559 | Email: enquiries@kalmining.com.au | Website: www.kalmining.com.au

HOLE ID	(MINE GRID)				DIP	DEPTH FROM	DEPTH TO	GRADE	METRES	TRUE THICKNESS	HOLE DEPTH
	NORTH	EAST	RL	AZIMUTH							
BAD007	6068	23024	6123.26	90.3	25.3	12.7	17.3	26.19	4.6	3.8	41
BAD032A	6132	22992	6090.56	25.9	-5.2	113.17	116.5	4.43	3.3	2.1	134
BAD036	6132	22992	6090.1	31.7	-23.1	102.99	105.96	3.95	2.97	1.8	125.31
BAD035	6132	22992	6089.89	49	-28.6	78.73	80.4	3.51	1.67	1.3	95
BAD039	6069	22983	6058.32	90	32.8	55.02	57	3.34	1.98	1.6	74.47
BAD030	6132	22992	6090.36	56.5	-10.7	52	66.06	2.4	4.06	3.8	81.2
BAD008	6066	23024	6122.39	151.1	13.5	30	32.9	2.15	2.9	1.4	75.1
BAD018	6078	23019	6123.39	23.1	38.8	46.5	47	1.36	0.5	0.3	62.5
BAD034	6132	22992	6089.05	69.9	-37	51.64	55.68	1.23	4.04	2.7	82.6
BAD019	6143	22991	6135.82	22.1	9.9	NO SIGNIFICANT INTERCEPT					160.6
BAD017	6077	23019	6124.11	43.1	47.5	NO SIGNIFICANT INTERCEPT					52
BAD016	6068	23024	6124.56	93.2	46.2	NO SIGNIFICANT INTERCEPT					65
BAD040	6069	22982	6058.21	129.6	33.1	NO SIGNIFICANT INTERCEPT					100
BAD041	6068	22982	6057.1	142.8	14	NO SIGNIFICANT INTERCEPT					109.82

Table 1: Underground Diamond Drilling results Bullant Gold Mine – East Lode.

KALGOORLIE MINING COMPANY LIMITED

Suite 1, 346 Barker Road, Subiaco WA 6008 | PO Box 846, Subiaco WA 6904

Telephone: (618) 6382 7200 | Fax: (618) 6382 3777

ACN: 091 009 559 | ABN: 44 091 009 559 | Email: enquiries@kalmining.com.au | Website: www.kalmining.com.au