

4 January 2010

Company Announcements Office

ASX Limited

ANNUAL UPDATED US PROSPECTUS

Attached is the annual updated United States (“US”) issued prospectus for the following iShares fund quoted on ASX which has been filed with the US Securities Exchange Commission:

ASX Code	Issuer	Fund
IJP	iShares, Inc.	iShares MSCI Japan

Disclaimer: Before investing in an iShares fund, you should carefully consider the appropriateness of such products to your circumstances, read the applicable Australian prospectus and ASX announcements relating to the fund, and consult an investment adviser. For more information about iShares funds (including Australian prospectuses) go to iShares.com.au or call 1300-iShares (1300 474 2737).

*** END ***

2010 PROSPECTUS TO SHAREHOLDERS
iSHARES® MSCI JAPAN INDEX FUND
JANUARY 1, 2010

EWJ | NYSE Arca

The Securities and Exchange Commission (“SEC”) has not approved or disapproved these securities or passed upon the adequacy of this prospectus. Any representation to the contrary is a criminal offense.



Table of Contents

Fund Overview	S-1
More Information About the Fund.....	1
A Further Discussion of Principal Risks ..	2
Portfolio Holdings Information	6
Management	6
Shareholder Information	10
Distribution	17
Financial Highlights	18
Index Provider	19
Disclaimers.....	19
Supplemental Information.....	21

“MSCI Japan IndexSM” is a servicemark of MSCI Inc. and has been licensed for use for certain purposes by BlackRock Institutional Trust Company, N.A. (“BTC”). iShares[®] is a registered trademark of BTC. The Fund is not sponsored, endorsed, sold, or promoted by MSCI Inc. nor does MSCI Inc. make any representation regarding the advisability of investing in the Fund. Prior to December 1, 2009, BlackRock Institutional Trust Company, N.A. was known as Barclays Global Investors, N.A.

[THIS PAGE INTENTIONALLY LEFT BLANK]

iSHARES[®] MSCI JAPAN INDEX FUND

Ticker: EWJ

Stock Exchange: NYSE Arca

Investment Objective

The iShares MSCI Japan Index Fund (the “Fund”) seeks investment results that correspond generally to the price and yield performance, before fees and expenses, of the MSCI Japan Index (the “Underlying Index”).

Fees and Expenses

The following table describes the fees and expenses that you will incur if you own shares of the Fund. The iShares, Inc. (the “Company’s”) Investment Advisory Agreement provides that BlackRock Fund Advisors (“BFA”) will pay all operating expenses of the Fund, except interest expense and taxes, any brokerage expenses, future distribution fees or expenses and extraordinary expenses.

You will also incur usual and customary brokerage commissions when buying or selling shares of the Fund, which are not reflected in the example that follows:

Annual Fund Operating Expenses (on going expenses that you pay each year as a percentage of the value of your investments)			
<u>Management Fees</u>	<u>Distribution and Service (12b-1) Fees</u>	<u>Other Expenses</u>	<u>Total Annual Fund Operating Expenses</u>
0.56%	None	None	0.56%

Example. This example is intended to help you compare the cost of owning shares of the Fund with the cost of investing in other funds. The example assumes that you invest \$10,000 in the Fund for the time periods indicated and then sell all of your shares at the end of those periods. The example also assumes that your investment has a 5% return each year and that the Fund’s operating expenses remain the same. Although your actual costs may be higher or lower, based on these assumptions, your costs would be:

<u>1 Year</u>	<u>3 Years</u>	<u>5 Years</u>	<u>10 Years</u>
\$57	\$179	\$313	\$701

Portfolio Turnover. The Fund pays transaction costs, such as commissions, when it buys and sells securities (or “turns over” its portfolio). A higher portfolio turnover rate may indicate higher transaction costs and may result in higher taxes when Fund shares are held in a taxable account. These costs, which are not reflected in annual fund operating expenses or in the example, affect the Fund’s performance. During the most recent fiscal year, the Fund’s portfolio turnover rate was 4% of the average value of its portfolio.

Principal Investment Strategies

The Underlying Index consists of stocks traded primarily on the Tokyo Stock Exchange. As of September 30, 2009, the Underlying Index's three largest sectors were consumer discretionary, industrials and financials.

BFA uses a "passive" or indexing approach to try to achieve the Fund's investment objective. Unlike many investment companies, the Fund does not try to "beat" the index it tracks and does not seek temporary defensive positions when markets decline or appear overvalued.

Indexing may eliminate the chance that the Fund will substantially outperform its Underlying Index but also may reduce some of the risks of active management, such as poor security selection. Indexing seeks to achieve lower costs and better after-tax performance by keeping portfolio turnover low in comparison to actively managed investment companies.

BFA uses a representative sampling indexing strategy to manage the Fund. "Representative sampling" is an indexing strategy that involves investing in a representative sample of securities that collectively has an investment profile similar to the Underlying Index. The securities selected are expected to have, in the aggregate, investment characteristics (based on factors such as market capitalization and industry weightings), fundamental characteristics (such as return variability and yield) and liquidity measures similar to those of the Underlying Index. The Fund may or may not hold all of the securities in the Underlying Index.

The Fund generally invests at least 95% of its assets in the securities of its

Underlying Index and in depositary receipts ("DRs") representing securities in its Underlying Index. The Fund will at all times invest at least 90% of its assets in the securities of the Underlying Index or in DRs representing securities in its Underlying Index. The Fund may invest the remainder of its assets in other securities, including securities not in the Underlying Index, futures contracts, options on futures contracts, other types of options and swaps related to its Underlying Index, as well as cash and cash equivalents, including shares of money market funds affiliated with BFA or its affiliates.

The Underlying Index is sponsored by an organization (the "Index Provider") that is independent of the Fund and BFA. The Index Provider determines the composition and relative weightings of the securities in the Underlying Index and publishes information regarding the market value of the Underlying Index. The Fund's Index Provider is MSCI Inc. ("MSCI"). Additional information regarding the Index Provider is provided in the *Index Provider* section of the Prospectus. The Fund is a series of the Company.

Industry Concentration Policy. The Fund will concentrate its investments (i.e., hold 25% or more of its total assets) in a particular industry or group of industries to approximately the same extent that its Underlying Index is concentrated. For purposes of this limitation, securities of the U.S. government (including its agencies and instrumentalities) and repurchase agreements collateralized by U.S. government securities are not considered to be issued by members of any industry.

Summary of Principal Risks

As with any investment, you could lose all or part of your investment in the Fund, and the Fund's performance could trail that of other investments. The Fund is subject to the principal risks noted below, any of which may adversely affect the Fund's net asset value ("NAV"), trading price, yield, total return and ability to meet its investment objective, as well as numerous other risks that are described in greater detail in the *Further Discussion of Principal Risks* section of the Prospectus and in the Statement of Additional Information ("SAI").

Asset Class Risk. Securities in the Underlying Index or the Fund's portfolio may underperform in comparison to the general securities markets or other asset classes.

Concentration Risk. To the extent that the Fund's investments are concentrated in a particular country, market, industry or asset class, the Fund will be susceptible to loss due to adverse occurrences affecting that country, market, industry or asset class.

Currency Risk. Because the Fund's NAV is determined in U.S. dollars, the Fund's NAV could decline if the currency of the non-U.S. market in which the Fund invests depreciates against the U.S. dollar.

Equity Securities Risk. Equity securities are subject to volatile changes in value and their values may be more volatile than other asset classes.

Geographic Risk. A natural disaster could occur in Japan.

Issuer Risk. Fund performance depends on the performance of individual companies in which the Fund

invests. Changes to the financial condition of any of those companies may cause the value of their securities to decline.

Lack of Natural Resources Risk. The Fund invests in Japan, which has few natural resources. Any fluctuation or shortage in the commodity markets could have a great impact on the Japanese economy.

Management Risk. The Fund is subject to the risk that BFA's investment management strategy may not produce the intended results.

Market Risk. The Fund's NAV could decline over short periods due to short-term market movements and over longer periods during market downturns.

Market Trading Risks. The Fund faces numerous market trading risks, including the potential lack of an active market for Fund shares, losses from trading in secondary markets, and disruption in the creation/redemption process of the Fund. ANY OF THESE FACTORS MAY LEAD TO THE FUND'S SHARES TRADING AT A PREMIUM OR DISCOUNT TO NAV.

Non-Diversification Risk. The Fund may invest a large percentage of its assets in securities issued by or representing a small number of issuers. As a result, Fund performance may depend on the performance of a small number of issuers.

Non-U.S. Securities Risk. Investments in the securities of non-U.S. issuers are subject to the risks associated with investing in those non-U.S. markets, such as heightened risks of inflation or nationalization. You may lose money due to political, economic and geographic events affecting a non-U.S.

issuer or market. The Fund is specifically exposed to **Asian Economic Risk, European Economic Risk and U.S. Economic Risk.**

Passive Investment Risk. The Fund is not actively managed and BFA does not attempt to take defensive positions in declining markets.

Reliance on Trading Partners Risk. The Fund invests in an economy that is heavily dependent upon trading with key partners. Any reduction in this trading may cause an adverse impact on the economy in which the Fund invests.

Security Risk. Some geographic areas in which the Fund invests have experienced defense concerns. These situations may cause uncertainty in these markets and may adversely affect their economies.

Structural Risk. The economy in which the Fund invests may be subject to considerable degrees of economic, political and social instability.

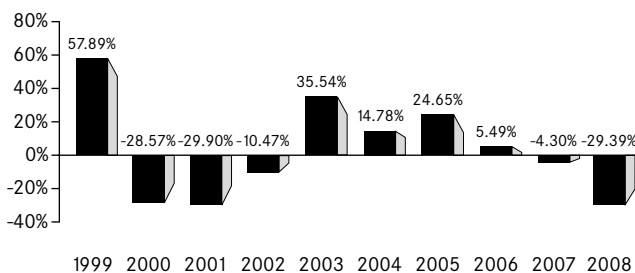
Tracking Error Risk. The performance of the Fund may diverge from that of its Underlying Index.

Valuation Risk. The value of the securities in the Fund's portfolio may change on days when shareholders will not be able to purchase or sell the Fund's shares.

Performance Information

The bar chart and table that follow show how the Fund has performed on a calendar year basis and provide an indication of the risks of investing in the Fund. Both assume that all dividends and distributions have been reinvested in the Fund. Past performance (before and after taxes) does not necessarily indicate how the Fund will perform in the future. Supplemental information about the Fund's performance is shown under the heading *Total Return Information* in the *Supplemental Information* section of the Prospectus.

Year by Year Returns¹ (Years Ended December 31)



¹ The Fund's total return for the nine months ended September 30, 2009 was 8.52%.

The best calendar quarter return during the periods shown above was 21.47% in the 3rd quarter of 2003; the worst was -18.75% in the 3rd quarter of 2001.

Updated performance information is available at www.iShares.com or by calling 1-800-iShares (1-800-474-2737) (toll free).

**Average Annual Total Returns
(for the periods ended December 31, 2008)**

	<u>1 Year</u>	<u>5 Years</u>	<u>10 Years</u>
(Inception Date: 03/12/1996)			
Return Before Taxes	-29.39%	0.39%	-0.22%
Return After Taxes on Distributions ¹	-29.44%	0.35%	-0.31%
Return After Taxes on Distributions and Sale of Fund Shares ¹	-18.80%	0.44%	-0.12%
MSCI Japan Index (Index returns do not reflect deductions for fees, expenses, or taxes)	-29.21%	0.93%	0.44%

¹ After-tax returns in the table above are calculated using the historical highest individual U.S. federal marginal income tax rates and do not reflect the impact of state or local taxes. Actual after-tax returns depend on an investor's tax situation and may differ from those shown, and after-tax returns shown are not relevant to tax-exempt investors or investors who hold shares through tax-deferred arrangements, such as 401(k) plans or individual retirement accounts ("IRAs"). Fund returns after taxes on distributions and sale of Fund shares are calculated assuming that an investor has sufficient capital gains of the same character from other investments to offset any capital losses from the sale of Fund shares. As a result, Fund returns after taxes on distributions and sale of Fund shares may exceed Fund returns before taxes and/or returns after taxes on distributions.

Management

Investment Adviser. BlackRock Fund Advisors.

Portfolio Managers. Diane Hsiung and Greg Savage, each a Portfolio Manager, are primarily responsible for the day-to-day management of the Fund. Each Portfolio Manager functions as a member of a portfolio manager team. Ms. Hsiung and Mr. Savage have been Portfolio Managers of the Fund since 2008.

Purchase and Sale of Fund Shares

The Fund is an Exchange-Traded Fund (commonly referred to as an "ETF"). Individual Fund shares may only be purchased and sold on a national securities exchange through a broker-dealer. The price of Fund shares is based on market price, and because ETF shares trade at market prices

rather than NAV, shares may trade at a price greater than NAV (a premium) or less than NAV (a discount). The Fund will only issue or redeem shares that have been aggregated into blocks of 600,000 shares or multiples thereof ("Creation Units") to authorized participants who have entered into agreements with the Fund's distributor. The Fund will issue or redeem Creation Units in return for a basket of assets that the Fund specifies each day.

Tax Information

The Fund intends to make distributions that may be taxable to you as ordinary income or capital gains, unless you are investing through a tax-deferred arrangement such as a 401(k) plan or an IRA. For more information regarding the tax consequences that may be associated with investing in the Fund, please refer to the *Taxes on Distributions* section of the Prospectus.

[THIS PAGE INTENTIONALLY LEFT BLANK]

More Information About the Fund

This Prospectus contains important information about investing in the Fund. Please read this Prospectus carefully before you make any investment decisions. Additional information regarding the Fund is available at www.iShares.com.

BFA* is the investment adviser to the Fund. Shares of the Fund are listed and trade at market prices on NYSE Arca, Inc. (“NYSE Arca”). The market price for a share of the Fund may be different from the Fund’s most recent NAV per share.

The Fund is an ETF. ETFs are funds that trade like other publicly-traded securities. The Fund is designed to track an index. Similar to shares of an index mutual fund, each share of the Fund represents a partial ownership in an underlying portfolio of securities intended to track a market index. Unlike shares of a mutual fund, which can be bought and redeemed from the issuing fund by all shareholders at a price based on NAV, shares of the Fund may be purchased or redeemed directly from the Fund at NAV solely by Authorized Participants. Also unlike shares of a mutual fund, shares of the Fund are listed on a national securities exchange and trade in the secondary market at market prices that change throughout the day.

The Fund invests in a particular segment of the securities markets and seeks to track the performance of a securities index that generally is not representative of the market as a whole. The Fund is designed to be used as part of broader asset allocation strategies. Accordingly, an investment in the Fund should not constitute a complete investment program.

An index is a theoretical financial calculation while the Fund is an actual investment portfolio. The performance of the Fund and its Underlying Index may vary due to transaction costs, non-U.S. currency valuation, asset valuations, corporate actions (such as mergers and spin-offs), timing variances, and differences between the Fund’s portfolio and the Underlying Index resulting from legal restrictions (such as diversification requirements) that apply to the Fund but not to the Underlying Index or the use of representative sampling. “Tracking error” is the difference between the performance (return) of the Fund’s portfolio and that of its Underlying Index. BFA expects that, over time, the Fund’s tracking error will not exceed 5%. Because the Fund uses a representative sampling indexing strategy, it can be expected to have a larger tracking error than if it used a replication indexing strategy. “Replication” is an indexing strategy in which a fund invests in substantially all of the securities in its underlying index in approximately the same proportions as in the underlying index.

An investment in the Fund is not a bank deposit and it is not insured or guaranteed by the Federal Deposit Insurance Corporation or any other government agency, BFA or any of its affiliates.

The Fund’s investment objective and the Underlying Index may be changed without shareholder approval.

* Prior to December 1, 2009, BFA was known as Barclays Global Fund Advisors.

A Further Discussion of Principal Risks

The Fund is subject to the principal risks noted below, any of which may adversely affect the Fund's NAV, trading price, yield, total return and ability to meet its investment objective. You could lose all or part of your investment in the Fund, and the Fund could underperform other investments.

Asset Class Risk. The securities in the Underlying Index or the Fund's portfolio may underperform the returns of other securities or indexes that track other industries, groups of industries, markets, asset classes or sectors. Various types of securities or indexes tend to experience cycles of outperformance and underperformance in comparison to the general securities markets.

Concentration Risk. To the extent that the Fund's portfolio reflects its Underlying Index's concentration in the securities of companies in a particular market, industry, group of industries, country, region, group of countries, sector or asset class, the Fund may be adversely affected by the performance of those securities, may be subject to increased price volatility and may be more susceptible to adverse economic, market, political or regulatory occurrences affecting that market, industry, group of industries, country, region, group of countries, sector or asset class.

Currency Risk. Because the Fund's NAV is determined on the basis of the U.S. dollar, investors may lose money if the Japanese currency depreciates against the U.S. dollar, even if the local currency value of the Fund's holdings in that market increases.

Equity Securities Risk. The Fund invests in equity securities, which are subject to volatile changes in value that may be attributable to market perception of a particular issuer or to general stock market fluctuations that affect all issuers. Investments in equity securities may be more volatile than investments in other asset classes.

Geographic Risk. Japan is located in a part of the world that has historically been prone to natural disasters such as earthquakes, volcanoes and tsunamis and is economically sensitive to environmental events. Any such event could result in a significant adverse impact on the Japanese economy.

Issuer Risk. The performance of the Fund depends on the performance of individual companies in which the Fund invests. Any issuer may perform poorly, causing the value of its securities to decline. Poor performance may be caused by poor management decisions, competitive pressures, changes in technology, disruptions in supply, labor problems or shortages, corporate restructurings, fraudulent disclosures or other factors. Issuers may, in times of distress or at their own discretion, decide to reduce or eliminate dividends, which may also cause their stock prices to decline.

Lack of Natural Resources Risk. Japan is an island state with few natural resources and limited land area and is reliant on imports for its commodity needs. Any fluctuations or shortages in the commodity markets could have a negative impact on the Japanese economy.

Management Risk. The Fund does not fully replicate its Underlying Index and may hold securities not included in its Underlying Index. As a result, the Fund is subject to the risk that BFA's investment management strategy, the implementation of which is subject to a number of constraints, may not produce the intended results.

Market Risk. The Fund could lose money due to short-term market movements and over longer periods during market downturns. Securities may decline in value due to factors affecting securities markets generally or particular industries represented in the markets. The value of a security may decline due to general market conditions, economic trends or events that are not specifically related to the issuer of the security or to factors that affect a particular industry or industries. During a general economic downturn in the securities markets, multiple asset classes may be negatively affected.

Market Trading Risks

Absence of Active Market. Although shares of the Fund are listed for trading on one or more stock exchanges, there can be no assurance that an active trading market for such shares will develop or be maintained.

Risks of Secondary Listings. The Fund's shares may be listed or traded on U.S. and non-U.S. stock exchanges other than the U.S. stock exchange where the Fund's primary listing is maintained. There can be no assurance that the Fund's shares will continue to trade on any such stock exchange or in any market or that the Fund's shares will continue to meet the requirements for listing or trading on any exchange or in any market. The Fund's shares may be less actively traded in certain markets than others, and investors are subject to the execution and settlement risks and market standards of the market where they or their broker direct their trades for execution. Certain information available to investors who trade Fund shares on a U.S. stock exchange during regular U.S. market hours may not be available to investors who trade in other markets, which may result in secondary market prices in such markets being less efficient.

Secondary Market Trading Risks. Shares of the Fund may trade in the secondary market at times when the Fund does not accept orders to purchase or redeem shares. At such times, shares may trade in the secondary market with more significant premiums or discounts than might be experienced at times when the Fund accepts purchase and redemption orders.

Secondary market trading in Fund shares may be halted by a stock exchange because of market conditions or other reasons. In addition, trading in Fund shares on a stock exchange or in any market may be subject to trading halts caused by extraordinary market volatility pursuant to "circuit breaker" rules on the exchange or market. There can be no assurance that the requirements necessary to maintain the listing or trading of Fund shares will continue to be met or will remain unchanged.

Shares of the Fund May Trade at Prices Other Than NAV. Shares of the Fund trade on exchanges at prices at, above or below their most recent NAV. The per share NAV of the Fund is calculated at the end of each business day and fluctuates with changes in the market value of the Fund's holdings since the most recent calculation. The trading prices of the Fund's shares fluctuate continuously throughout trading hours based on market supply and demand rather than NAV. The trading prices of the Fund's shares may deviate significantly from NAV during periods of market volatility. **ANY OF THESE FACTORS MAY LEAD TO THE FUND'S SHARES TRADING AT A PREMIUM OR DISCOUNT TO NAV.** However, because shares can be created and redeemed in Creation Units at NAV (unlike shares of many closed-end funds, which

frequently trade at appreciable discounts from, and sometimes at premiums to, their NAVs), BFA believes that large discounts or premiums to the NAV of the Fund are not likely to be sustained over the long-term. While the creation/redemption feature is designed to make it likely that the Fund's shares normally will trade on exchanges at prices close to the Fund's next calculated NAV, exchange prices are not expected to correlate exactly with the Fund's NAV due to timing reasons as well as market supply and demand factors. In addition, disruptions to creations and redemptions or the existence of extreme market volatility may result in trading prices that differ significantly from NAV. If a shareholder purchases at a time when the market price is at a premium to the NAV or sells at a time when the market price is at a discount to the NAV, the shareholder may sustain losses.

Costs of Buying or Selling Fund Shares. Buying or selling Fund shares involves two types of costs that apply to all securities transactions. When buying or selling shares of the Fund through a broker, you will incur a brokerage commission or other charges imposed by brokers as determined by that broker. In addition, you will also incur the cost of the "spread" – that is, the difference between what professional investors are willing to pay for Fund shares (the "bid" price) and the price at which they are willing to sell Fund shares (the "ask" price). Because of the costs inherent in buying or selling Fund shares, frequent trading may detract significantly from investment results and an investment in Fund shares may not be advisable for investors who anticipate regularly making small investments.

Non-Diversification Risk. The Fund is classified as "non-diversified." This means that the Fund may invest a large percentage of its assets in securities issued by or representing a small number of issuers. As a result, the Fund may be more susceptible to the risks associated with these particular issuers, or to a single economic, political or regulatory occurrence affecting these issuers.

Non-U.S. Securities Risks. Investments in the securities of non-U.S. issuers are subject to all of the risks of investing in the market of such issuers, including market fluctuations caused by economic and political developments. As a result of investing in non-U.S. securities, the Fund may be subject to increased risk of loss caused by any of the factors listed below:

- Lower levels of liquidity and market efficiency;
- Greater securities price volatility;
- Exchange rate fluctuations and exchange controls;
- Less availability of public information about issuers;
- Limitations on foreign ownership of securities;
- Imposition of withholding or other taxes;
- Imposition of restrictions on the expatriation of the funds or other assets of the Fund;
- Higher transaction and custody costs and delays in settlement procedures;
- Difficulties in enforcing contractual obligations;
- Lower levels of regulation of the securities market;

- Weaker accounting, disclosure and reporting requirements; and
- Legal principles relating to corporate governance, directors' fiduciary duties and liabilities and stockholders' rights in markets in which the Fund invests may differ and/or may not be as extensive or protective as those that apply in the United States.

Passive Investment Risk. The Fund is not actively managed and may be affected by a general decline in market segments relating to its Underlying Index. The Fund invests in securities included in, or representative of, its Underlying Index regardless of their investment merits. BFA does not attempt to take defensive positions in declining markets.

Reliance on Trading Partners Risk. The Japanese economy is heavily dependent on international trade and has been adversely affected by trade tariffs, other protectionist measures and rising commodity prices. Japanese economic growth has generally been dependent on the U.S. and Chinese economies, with trade increasing with China in recent years:

Asian Economic Risk. Certain Asian economies have experienced over-extension of credit, currency devaluations and restrictions, high unemployment, high inflation, decreased exports and economic recessions. Economic events in any one country can have a significant economic effect on the entire Asian region as well as on major trading partners outside Asia and any adverse event in the Asian markets may have a significant adverse effect on the Japanese economy.

European Economic Risk. The Economic and Monetary Union of the European Union (the "EU") requires compliance with restrictions on inflation rates, deficits, interest rates, debt levels and fiscal and monetary controls, each of which may significantly affect every country in Europe. Decreasing imports or exports, changes in governmental regulations on trade, changes in the exchange rate of the euro and recessions in EU economies may have a significant adverse effect on the economies of EU member countries and their trading partners.

U.S. Economic Risk. The United States is a significant trading partner of Japan. Decreasing U.S. imports, new trade regulations, changes in the U.S. dollar exchange rates or a recession in the United States may have an adverse impact on the Japanese economy.

Security Risk. Japan's relations with its neighbors, particularly China, North Korea, South Korea and Russia, have at times been strained due to territorial disputes, historical animosities and defense concerns. Most recently, the Japanese government has shown concern over the increased nuclear and military activity by North Korea. Strained relations may cause uncertainty in the Japanese markets and adversely affect the overall Japanese economy in times of crisis.

Structural Risks. Japan may be subject to risks relating to political, economic and labor risks. Any of these risks, individually or in the aggregate, could adversely affect investments in the Fund:

Political Risk. Historically, Japan has been subject to unpredictable national politics and may experience frequent political turnover. Future political developments may lead to changes in policy that might adversely affect the Fund's investments.

Large Government Debt Risk. The Japanese economy faces several concerns, including a financial system with large levels of nonperforming loans, over-leveraged corporate balance sheets, extensive cross-ownership by major corporations, a changing corporate governance structure, and large government deficits.

Currency Risk. The Japanese yen has fluctuated widely at times and any increase in its value may cause a decline in exports that could weaken the economy.

Labor Risk. Japan has an aging workforce. It is a labor market undergoing fundamental structural changes, as traditional lifetime employment clashes with the need for increased labor mobility, which may adversely affect Japan's economic competitiveness.

Tracking Error Risk. Imperfect correlation between the Fund's portfolio securities and those in its Underlying Index, rounding of prices, changes to the Underlying Index and regulatory requirements may cause tracking error, the divergence of the Fund's performance from that of its Underlying Index. This risk may be heightened during times of increased market volatility or other unusual market conditions. Tracking error also may result because the Fund incurs fees and expenses while its Underlying Index does not.

Valuation Risk. Because non-U.S. exchanges may be open on days when the Fund does not price its shares, the value of the securities in the Fund's portfolio may change on days when shareholders will not be able to purchase or sell the Fund's shares.

Portfolio Holdings Information

A description of the Company's policies and procedures with respect to the disclosure of the Fund's portfolio securities is available in the Fund's SAI. The top holdings of the Fund can be found at www.iShares.com. Fund fact sheets provide information regarding the Fund's top holdings and may be requested by calling 1-800-iShares (1-800-474-2737).

Management

Investment Adviser. As investment adviser, BFA has overall responsibility for the general management and administration of the Company. BFA provides an investment program for the Fund and manages the investment of the Fund's assets. In seeking to achieve the Fund's investment objective, BFA uses teams of portfolio managers, investment strategists and other investment specialists. This team approach brings together many disciplines and leverages BFA's extensive resources.

Pursuant to the Investment Advisory Agreement between BFA and the Company (entered into on behalf of the Fund), BFA is responsible for substantially all expenses of the Fund, including the cost of transfer agency, custody, fund administration, legal, audit and other services except interest expense and taxes, brokerage expenses, future distribution fees or expenses and extraordinary expenses.

For its investment advisory services to the Fund, BFA is entitled to receive a management fee from the Fund based on the Fund's allocable portion of the aggregate of the average daily net assets of the Fund and certain other iShares funds

(iShares MSCI Australia Index Fund, iShares MSCI Austria Investable Market Index Fund, iShares MSCI Belgium Investable Market Index Fund, iShares MSCI Canada Index Fund, iShares MSCI EMU Index Fund, iShares MSCI France Index Fund, iShares MSCI Germany Index Fund, iShares MSCI Hong Kong Index Fund, iShares MSCI Italy Index Fund, iShares MSCI Japan Small Cap Index Fund, iShares MSCI Malaysia Index Fund, iShares MSCI Mexico Investable Market Index Fund, iShares MSCI Netherlands Investable Market Index Fund, iShares MSCI Singapore Index Fund, iShares MSCI Spain Index Fund, iShares MSCI Sweden Index Fund, iShares MSCI Switzerland Index Fund and iShares MSCI United Kingdom Index Fund, which are offered in separate prospectuses) as follows: 0.59% per annum of the aggregate net assets less than or equal to \$7.0 billion, plus 0.54% per annum of the aggregate net assets over \$7.0 billion, up to and including \$11.0 billion, plus 0.49% per annum of the aggregate net assets over \$11.0 billion, up to and including \$24.0 billion, plus 0.44% per annum of the aggregate net assets over \$24.0 billion, up to and including \$48.0 billion, plus 0.40% per annum of the aggregate net assets in excess of \$48.0 billion.

As calculated on August 31, 2009, for its investment advisory services to the Fund, BFA is entitled to receive a management fee from the Fund, based on a percentage of the Fund's average daily net assets, at an annual rate of 0.56%.

BFA is located at 400 Howard Street, San Francisco, CA 94105. It is a wholly-owned subsidiary of BTC, which in turn is a majority-owned subsidiary of BlackRock, Inc. ("BlackRock"). As of December 1, 2009, BTC and its affiliates, including BFA and BlackRock, provided investment advisory services for assets in excess of \$3.1 trillion. BFA, BTC, BlackRock Investors Services, BlackRock and their affiliates deal, trade and invest for their own accounts in the types of securities in which the Fund may also invest.

A discussion regarding the basis for the Company's Board of Directors' (the "Board") approval of the Investment Advisory Agreement with BFA is available in the Fund's annual report for the period ended August 31.

Portfolio Managers. Diane Hsiung and Greg Savage (the "Portfolio Managers") are primarily responsible for the day-to-day management of the Fund. Each Portfolio Manager is responsible for various functions related to portfolio management, including, but not limited to, investing cash inflows, coordinating with members of his or her team to focus on certain asset classes, implementing investment strategy, researching and reviewing investment strategy and overseeing members of his or her portfolio management team with more limited responsibilities.

Diane Hsiung is an employee of BFA and BTC and, together with the other Portfolio Manager, is primarily responsible for the day-to-day management of the Fund. Ms. Hsiung has been a senior portfolio manager for BFA and BTC since 2009. Prior to her employment with BFA and BTC, Ms. Hsiung was a senior portfolio manager from 2007 to 2009 for Barclays Global Fund Advisors ("BGFA") and Barclays Global Investors, N.A. ("BGI") and a portfolio manager from 2002 to 2006 for BGFA and BGI. Ms. Hsiung has been a Portfolio Manager of the Fund since 2008.

Greg Savage is an employee of BFA and BTC and, together with the other Portfolio Manager, is primarily responsible for the day-to-day management of the Fund. Mr.

Savage has been a senior portfolio manager for BFA and BTC since 2009. Prior to his employment with BFA and BTC, Mr. Savage was a senior portfolio manager from 2006 to 2009 for BGFA and BGI and a portfolio manager from 2001 to 2006 for BGFA and BGI. Mr. Savage has been a Portfolio Manager of the Fund since 2008.

The Fund's SAI provides additional information about the Portfolio Managers' compensation, other accounts managed by the Portfolio Managers and the Portfolio Managers' ownership (if any) of shares in the Fund.

Administrator, Custodian and Transfer Agent. State Street Bank and Trust Company ("State Street") is the administrator, custodian and transfer agent for the Fund.

Conflicts of Interest. BFA wants you to know that there are certain entities with which BFA has relationships that may give rise to conflicts of interest, or the appearance of conflicts of interest. These entities include the following: BFA's affiliates (including BlackRock and PNC Financial Services Group, Inc., and each of their affiliates, directors, partners, trustees, managing members, officers and employees (collectively, the "Affiliates")) and BlackRock's significant shareholders, Merrill Lynch & Co., Inc. and its affiliates, including Bank of America Corporation (each a "BAC Entity"), and Barclays Bank PLC and its affiliates, including Barclays Capital Corp. (each a "Barclays Entity") (for convenience the Affiliates, BAC Entities and Barclays Entities are collectively referred to in this section as the "Entities" and each separately is referred to as an "Entity").

The activities of Entities in the management of, or their interest in, their own accounts and other accounts they manage, may present conflicts of interest that could disadvantage the Fund and its shareholders. The Entities provide investment management services to other funds and discretionary managed accounts that follow an investment program similar to that of the Fund. The Entities are involved worldwide with a broad spectrum of financial services and asset management activities and may engage in the ordinary course of business in activities in which their interests or the interests of their clients may conflict with those of the Fund. One or more of the Entities act or may act as an investor, investment banker, research provider, investment manager, financier, advisor, market maker, trader, prime broker, lender, agent and principal, and have other direct and indirect interests, in securities, currencies and other instruments in which the Fund directly and indirectly invest. Thus, it is likely that the Fund will have multiple business relationships with and will invest in, engage in transactions with, make voting decisions with respect to, or obtain services from entities for which an Entity performs or seeks to perform investment banking or other services.

One or more Entities may engage in proprietary trading and advise accounts and funds that have investment objectives similar to those of the Fund and/or that engage in and compete for transactions in the same types of securities, currencies and other instruments as the Fund, including in securities issued by other open-end and closed-end investment management companies, including investment companies that are affiliated with the Fund and BFA, to the extent permitted under the 1940 Act. The trading activities of these Entities are carried out without reference to positions held directly or indirectly by the Fund and may result in an Entity having positions that are adverse to those of the Fund.

No Entity is under any obligation to share any investment opportunity, idea or strategy with the Fund. As a result, an Entity may compete with the Fund for appropriate investment opportunities. As a result of this and several other factors, the results of the Fund's investment activities may differ from those of an Entity and of other accounts managed by an Entity, and it is possible that the Fund could sustain losses during periods in which one or more Entities and other accounts achieve profits on their trading for proprietary or other accounts. The opposite result is also possible.

The Fund may, from time to time, enter into transactions in which an Entity or an Entity's other clients have an adverse interest. Furthermore, transactions undertaken by Entity-advised clients may adversely impact the Fund. Transactions by one or more Entity-advised clients or BFA may have the effect of diluting or otherwise disadvantaging the values, prices or investment strategies of the Fund.

An Entity may maintain securities indices as part of their product offerings. Index based funds seek to track the performance of securities indices and may use the name of the index in the fund name. Index providers, including the Entities, may be paid licensing fees for use of their indices or index names. Entities will not be obligated to license their indices to BlackRock, and BlackRock cannot be assured that the terms of any index licensing agreement with the Entities will be as favorable as those terms offered to other index licensees.

The Fund's activities may be limited because of regulatory restrictions applicable to one or more Entities, and/or their internal policies designed to comply with such restrictions. In addition, the Fund may invest in securities of companies with which an Entity has or is trying to develop investment banking relationships or in which an Entity has significant debt or equity investments. The Fund also may invest in securities of companies for which an Entity provides or may some day provide research coverage. An Entity may have business relationships with and purchase or distribute or sell services or products from or to distributors, consultants or others who recommend the Fund or who engage in transactions with or for the Fund, and may receive compensation for such services. The Fund may also make brokerage and other payments to Entities in connection with the Fund's portfolio investment transactions.

Under a securities lending program approved by the Fund's Board, the Fund has retained an Affiliate of BFA to serve as the securities lending agent for the Fund to the extent that the Fund participates in the securities lending program. For these services, the lending agent may receive a fee from the Fund, including a fee based on the returns earned on the Fund's investment of the cash received as collateral for the loaned securities. In addition, one or more Affiliates may be among the entities to which the Fund may lend its portfolio securities under the securities lending program.

The activities of Affiliates may give rise to other conflicts of interest that could disadvantage the Fund and its shareholders. BFA has adopted policies and procedures designed to address these potential conflicts of interest.

Shareholder Information

Additional shareholder information, including how to buy and sell shares of the Fund, is available free of charge by calling toll-free: 1-800-iShares (1-800-474-2737) or visiting our website at www.iShares.com.

Buying and Selling Shares. Shares of the Fund are listed for trading on a national securities exchange during the trading day. Shares can be bought and sold throughout the trading day like shares of other publicly-traded companies. The Company does not impose any minimum investment for shares of the Fund purchased on an exchange. Buying or selling Fund shares involves two types of costs that may apply to all securities transactions. When buying or selling shares of the Fund through a broker, you will likely incur a brokerage commission or other charges determined by your broker. In addition, you may incur the cost of the “spread” – that is, any difference between the bid price and the ask price. The commission is frequently a fixed amount and may be a significant proportional cost for investors seeking to buy or sell small amounts of shares. The spread varies over time for shares of the Fund based on its trading volume and market liquidity, and is generally lower if the Fund has a lot of trading volume and market liquidity and higher if the Fund has little trading volume and market liquidity. The Fund’s shares trade under the trading symbol “EWJ”.

Shares of the Fund may be acquired or redeemed directly from the Fund only in Creation Units or multiples thereof, as discussed in the *Creations and Redemptions* section of this Prospectus. Only an Authorized Participant (as defined in the *Creations and Redemptions* section) may engage in creation or redemption transactions directly with the Fund. Once created, shares of the Fund generally trade in the secondary market in amounts less than a Creation Unit.

The Board has adopted a policy of not monitoring for frequent purchases and redemptions of Fund shares (“frequent trading”) that appear to attempt to take advantage of a potential arbitrage opportunity presented by a lag between a change in the value of the Fund’s portfolio securities after the close of the primary markets for the Fund’s portfolio securities and the reflection of that change in the Fund’s NAV (“market timing”), because the Fund sells and redeems its shares directly through transactions that are in-kind and/or for cash with a deadline for placing cash-related transactions no later than the close of the primary markets for the Fund’s portfolio securities. The Board has not adopted a policy of monitoring for other frequent trading activity because shares of the Fund are listed and traded on national securities exchanges.

The national securities exchange on which the Fund’s shares are listed is open for trading Monday through Friday and is closed on weekends and the following holidays: New Year’s Day, Martin Luther King, Jr. Day, Presidents’ Day, Good Friday, Memorial Day, Independence Day, Labor Day, Thanksgiving Day and Christmas Day. The Fund’s primary listing exchange is NYSE Arca.

Section 12(d)(1) of the Investment Company Act of 1940, as amended (the “1940 Act”), restricts investments by registered investment companies in the securities of other investment companies. Registered investment companies are permitted to

invest in the Fund beyond the limits set forth in Section 12(d)(1), subject to certain terms and conditions set forth in an SEC exemptive order issued to the Company, including that such investment companies enter into an agreement with the Company.

Book Entry. Shares of the Fund are held in book-entry form, which means that no stock certificates are issued. The Depository Trust Company (“DTC”) or its nominee is the record owner of all outstanding shares of the Fund and is recognized as the owner of all shares for all purposes.

Investors owning shares of the Fund are beneficial owners as shown on the records of DTC or its participants. DTC serves as the securities depository for shares of the Fund. DTC participants include securities brokers and dealers, banks, trust companies, clearing corporations and other institutions that directly or indirectly maintain a custodial relationship with DTC. As a beneficial owner of shares, you are not entitled to receive physical delivery of stock certificates or to have shares registered in your name, and you are not considered a registered owner of shares. Therefore, to exercise any right as an owner of shares, you must rely upon the procedures of DTC and its participants. These procedures are the same as those that apply to any other securities that you hold in book-entry or “street name” form.

Share Prices. The trading prices of the Fund’s shares in the secondary market generally differ from the Fund’s daily NAV per share and are affected by market forces such as supply and demand, economic conditions and other factors. Information regarding the intraday value of shares of the Fund, also known as the “indicative optimized portfolio value” (“IOPV”), is disseminated every 15 seconds throughout the trading day by the national securities exchange on which the Fund’s shares are listed or by market data vendors or other information providers. The IOPV is based on the current market value of the securities and/or cash required to be deposited in exchange for a Creation Unit. The IOPV does not necessarily reflect the precise composition of the current portfolio of securities held by the Fund at a particular point in time nor the best possible valuation of the current portfolio. Therefore, the IOPV should not be viewed as a “real-time” update of the NAV, which is computed only once a day. The IOPV is generally determined by using both current market quotations and/or price quotations obtained from broker-dealers that may trade in the portfolio securities held by the Fund. The quotations of certain Fund holdings may not be updated during U.S. trading hours if such holdings do not trade in the U.S. The Fund is not involved in, or responsible for, the calculation or dissemination of the IOPV and makes no representation or warranty as to its accuracy.

Determination of Net Asset Value. The NAV of the Fund is generally determined once daily Monday through Friday generally as of the regularly scheduled close of business of the New York Stock Exchange (“NYSE”) (normally 4:00 p.m., Eastern time) on each day that the NYSE is open for trading, based on prices at the time of closing, provided that (a) any assets or liabilities denominated in currencies other than the U.S. dollar shall be translated into U.S. dollars at the prevailing market rates on the date of valuation as quoted by one or more major banks or dealers that makes a two-way market in such currencies (or a data service provider based on quotations received from such banks or dealers) and (b) U.S. fixed-income assets may be valued as of the

announced closing time for trading in fixed-income instruments on any day that the Securities Industry and Financial Markets Association announces an early closing time. The NAV of the Fund is calculated by dividing the value of the net assets of the Fund (i.e., the value of its total assets less total liabilities) by the total number of outstanding shares of the Fund, generally rounded to the nearest cent.

The securities and other assets of the Fund are valued pursuant to the pricing policy and procedures approved by the Board. The Fund utilizes a fair value hierarchy that prioritizes the inputs to valuation techniques used to measure fair value into three broad levels. Inputs may be based on independent market data (“observable inputs”) or they may be internally developed (“unobservable inputs”). The hierarchy gives the highest priority to unadjusted quoted prices in active markets for identical assets or liabilities (Level 1 measurements) and the lowest priority to unobservable inputs (Level 3 measurements). The three levels of the fair value hierarchy are as follows:

- Level 1 – Inputs that reflect unadjusted quoted prices in active markets for identical assets or liabilities that the Fund has the ability to access at the measurement date;
- Level 2 – Inputs other than quoted prices included within Level 1 that are observable for the asset or liability either directly or indirectly, including quoted prices for similar assets or liabilities in active markets, quoted prices for identical or similar assets or liabilities in markets that are not considered to be active, inputs other than quoted prices that are observable for the asset or liability and inputs that are derived principally from or corroborated by observable market data by correlation or other means; and
- Level 3 – Inputs that are unobservable for the asset or liability.

The availability of observable inputs can vary from security to security and is affected by a wide variety of factors, including, for example, the type of security, whether the security is new and not yet established in the marketplace, the liquidity of markets and other characteristics particular to the security. Inputs may include price information, volatility statistics, specific and broad credit data, liquidity statistics and other factors. To the extent that valuation is based on models or inputs that are less observable or unobservable in the market, the determination of fair value requires more judgment. Accordingly, the degree of judgment exercised in determining fair value is greatest for instruments categorized in Level 3 of the fair value hierarchy.

The level of a value determined for a financial instrument within the fair value hierarchy is based on the lowest level of any input that is significant to the fair value measurement in its entirety. The categorization of a value determined for a financial instrument within the hierarchy is based upon the pricing transparency of the instrument and does not necessarily correspond to the Fund’s perceived risk of that instrument.

Valuing the Fund’s investments using fair value pricing will result in using prices for those investments that may differ from current market valuations. Use of fair value prices and certain current market valuations could result in a difference between the prices used to calculate the Fund’s NAV and the prices used by the Underlying Index, which, in turn, could result in a difference between the Fund’s performance and the performance of the Underlying Index.

The value of assets denominated in non-U.S. currencies is converted into U.S. dollars using exchange rates deemed appropriate by BFA as investment adviser. Use of a rate different from the rate used by the Index Provider may adversely affect the Fund's ability to track the Underlying Index.

Dividends and Distributions

General Policies. Dividends from net investment income, if any, are generally declared and paid semi-annually by the Fund. Distributions of net realized securities gains, if any, generally are declared and paid once a year, but the Company may make distributions on a more frequent basis for the Fund. The Company reserves the right to declare special distributions if, in its reasonable discretion, such action is necessary or advisable to preserve its status as a regulated investment company ("RIC") or to avoid imposition of income or excise taxes on undistributed income or realized gains.

Dividends and other distributions on shares of the Fund are distributed on a *pro rata* basis to beneficial owners of such shares. Dividend payments are made through DTC participants and indirect participants to beneficial owners then of record with proceeds received from the Fund.

Dividend Reinvestment Service. No dividend reinvestment service is provided by the Company. Broker-dealers may make available the DTC book-entry Dividend Reinvestment Service for use by beneficial owners of the Fund for reinvestment of their dividend distributions. Beneficial owners should contact their broker to determine the availability and costs of the service and the details of participation therein. Brokers may require beneficial owners to adhere to specific procedures and timetables. If this service is available and used, dividend distributions of both income and realized gains will be automatically reinvested in additional whole shares of the Fund purchased in the secondary market.

Taxes. As with any investment, you should consider how your investment in shares of the Fund will be taxed. The tax information in this Prospectus is provided as general information. You should consult your own tax professional about the tax consequences of an investment in shares of the Fund.

Unless your investment in Fund shares is made through a tax-exempt entity or tax-deferred retirement account, such as an IRA, you need to be aware of the possible tax consequences when the Fund makes distributions or you sell Fund shares.

Taxes on Distributions. Distributions from the Fund's net investment income (other than qualified dividend income), including distributions of income from securities lending and distributions out of the Fund's net short-term capital gains, if any, are taxable to you as ordinary income. Distributions by the Fund of net long-term capital gains in excess of net short-term capital losses (capital gain dividends) are taxable to you as long-term capital gains, generally at a 15% tax rate (0% at certain income levels), regardless of how long you have held the Fund's shares. Distributions by the Fund that qualify as qualified dividend income are taxable to you at long-term capital gain rates. The 15% and 0% tax rates expire for taxable years beginning after December 31, 2010.

Dividends will be qualified dividend income to you if they are attributable to qualified dividend income received by the Fund. Generally, qualified dividend income includes

dividend income from taxable U.S. corporations and qualified non-U.S. corporations, provided that the Fund satisfies certain holding period requirements in respect of the stock of such corporations and has not hedged its position in the stock in certain ways. For this purpose, a qualified non-U.S. corporation means any non-U.S. corporation that is eligible for benefits under a comprehensive income tax treaty with the United States which includes an exchange of information program or if the stock with respect to which the dividend was paid is readily tradable on an established United States security market. The term excludes a corporation that is a passive foreign investment company. Under current Internal Revenue Service guidance, the United States has an appropriate comprehensive income tax treaty with Japan.

Dividends received by the Fund from a real estate investment trust (“REIT”) or another RIC generally are qualified dividend income only to the extent the dividend distributions are made out of qualified dividend income received by such REIT or RIC. It is expected that dividends received by the Fund from a REIT and distributed to a shareholder generally will be taxable to the shareholder as ordinary income.

Under current law, the taxation of qualified dividend income at long-term capital gain rates will no longer apply for taxable years beginning after December 31, 2010.

For a dividend to be treated as qualified dividend income, the dividend must be received with respect to a share of stock held without being hedged by the Fund, and to a share of the Fund held without being hedged by you, for 61 days during the 121-day period beginning at the date which is 60 days before the date on which such share becomes ex-dividend with respect to such dividend or in the case of certain preferred stock 91 days during the 181-day period beginning 90 days before such date. In general, your distributions are subject to U.S. federal income tax for the year when they are paid. Certain distributions paid in January, however, may be treated as paid on December 31 of the prior year.

If the Fund’s distributions exceed current and accumulated earnings and profits, all or a portion of the distributions made in the taxable year may be recharacterized as a return of capital to shareholders. A return of capital distribution generally will not be taxable but will reduce the shareholder’s cost basis and result in a higher capital gain or lower capital loss when those shares on which the distribution was received are sold.

If you are neither a resident nor a citizen of the United States or if you are a non-U.S. entity, the Fund’s ordinary income dividends (which include distributions of net short-term capital gains) will generally be subject to a 30% U.S. withholding tax, unless a lower treaty rate applies, provided that withholding tax will generally not apply to any gain or income realized by a non-U.S. shareholder in respect of any distributions of long-term capital gains or upon the sale or other disposition of shares of the Fund.

Dividends and interest received by the Fund with respect to non-U.S. securities may give rise to withholding and other taxes imposed by non-U.S. countries. Tax conventions between certain countries and the United States may reduce or eliminate such taxes. If, as is expected, more than 50% of the total assets of the Fund at the close of a year consist of non-U.S. stocks or securities, the Fund may “pass through” to you certain non-U.S. income taxes (including withholding taxes) paid by the Fund.

This means that you would be considered to have received as an additional dividend your share of such non-U.S. taxes, but you may, in such case, be entitled to either a corresponding tax deduction in calculating your taxable income, or, subject to certain limitations, a credit in calculating your U.S. federal income tax.

If you are a resident or a citizen of the United States, by law, back-up withholding will apply to your distributions and proceeds if you have not provided a taxpayer identification number or social security number and made other required certifications.

Taxes When Shares are Sold. Currently, any capital gain or loss realized upon a sale of Fund shares is generally treated as a long-term gain or loss if the shares have been held for more than one year. Any capital gain or loss realized upon a sale of Fund shares held for one year or less is generally treated as short-term gain or loss, except that any capital loss on the sale of shares held for six months or less is treated as long-term capital loss to the extent that capital gain dividends were paid with respect to such shares.

The foregoing discussion summarizes some of the consequences under current U.S. federal tax law of an investment in the Fund. It is not a substitute for personal tax advice. You may also be subject to state and local taxation on Fund distributions and sales of shares. Consult your personal tax adviser about the potential tax consequences of an investment in shares of the Fund under all applicable tax laws.

Creations and Redemptions. Prior to trading in the secondary market, shares of the Fund are “created” at NAV by market makers, large investors and institutions only in block-size Creation Units of 600,000 shares or multiples thereof. Each “creator” or “Authorized Participant” enters into an authorized participant agreement with the Fund’s distributor, SEI Investments Distribution Co. (the “Distributor”). Only an Authorized Participant may create or redeem Creation Units directly with the Fund. A creation transaction, which is subject to acceptance by the transfer agent, generally takes place when an Authorized Participant deposits into the Fund a portfolio of securities approximating the holdings of the Fund and a specified amount of cash in exchange for a specified number of Creation Units. To the extent practicable, the composition of such portfolio generally corresponds *pro rata* to the holdings of the Fund.

Similarly, shares can be redeemed only in Creation Units, generally in-kind for a portfolio of securities held by the Fund (“Fund Securities”) and a specified amount of cash. *Except when aggregated in Creation Units, shares are not redeemable by the Fund.* The prices at which creations and redemptions occur are based on the next calculation of NAV after an order is received in a form described in the authorized participant agreement.

The Fund intends to comply with the U.S. federal securities laws in accepting securities for deposits and satisfying redemptions with redemption securities, including that the securities accepted for deposits and the securities used to satisfy redemption requests will be sold in transactions that would be exempt from registration under the Securities Act of 1933, as amended (the “1933 Act”). Further, an Authorized Participant that is not a “qualified institutional buyer,” as such term is

defined under Rule 144A of the 1933 Act, will not be able to receive Fund Securities that are restricted securities eligible for resale under Rule 144A.

Creations and redemptions must be made through a firm that is either a member of the Continuous Net Settlement System of the National Securities Clearing Corporation or a DTC participant and has executed an agreement with the Distributor with respect to creations and redemptions of Creation Unit aggregations. Information about the procedures regarding creation and redemption of Creation Units (including the cut-off times for receipt of creation and redemption orders) is included in the SAI.

Because new shares may be created and issued on an ongoing basis, at any point during the life of the Fund a “distribution,” as such term is used in the 1933 Act, may be occurring. Broker-dealers and other persons are cautioned that some activities on their part may, depending on the circumstances, result in their being deemed participants in a distribution in a manner that could render them statutory underwriters and subject to the prospectus delivery and liability provisions of the 1933 Act. Any determination of whether one is an underwriter must take into account all the relevant facts and circumstances of each particular case.

Broker-dealers should also note that dealers who are not “underwriters” but are participating in a distribution (as contrasted to ordinary secondary transactions), and thus dealing with shares that are part of an “unsold allotment” within the meaning of Section 4(3)(C) of the 1933 Act, would be unable to take advantage of the prospectus delivery exemption provided by Section 4(3) of the 1933 Act. For delivery of prospectuses to exchange members, the prospectus delivery mechanism of Rule 153 under the 1933 Act is available only with respect to transactions on a national securities exchange.

Transaction Fees. Authorized Participants are charged standard creation and redemption transaction fees to offset transfer and other transaction costs associated with the issuance and redemption of Creation Units. Purchasers and redeemers of Creation Units for cash are required to pay an additional variable charge (up to the maximum amount shown below) to compensate for brokerage and market impact expenses. The standard creation and redemption transaction fees are set forth below. The standard creation transaction fee is charged to each purchaser on the day such purchaser creates a Creation Unit. The standard creation transaction fee is the same regardless of the number of Creation Units purchased by an investor on the same day. BFA may, from time to time, at its own expense, compensate purchasers of Creation Units who have purchased substantial amounts of Creation Units and other financial institutions for administrative or marketing services. Similarly, the standard redemption transaction fee is the same regardless of the number of Creation Units redeemed on the same day. Creations and redemptions through DTC for cash (when cash creations and redemptions are available or specified) are also subject to an additional variable charge up to the maximum amount shown in the table below. In addition, purchasers of shares in Creation Units are responsible for payment of the costs of transferring securities to the Fund and redeemers of shares in Creation Units are responsible for the costs of transferring securities from the Fund. Investors who use the services of a broker or other such intermediary may pay fees for such services.

The following table also shows, as of September 30, 2009, the approximate value of one Creation Unit, including standard and maximum additional creation and redemption transaction fees:

<u>Approximate Value of a Creation Unit</u>	<u>Creation Unit Size</u>	<u>Standard Creation/Redemption Transaction Fee</u>	<u>Maximum Additional Variable Charge for Creations*</u>	<u>Maximum Additional Variable Charge for Redemptions*</u>
\$6,036,000	600,000	\$5,000	3.0%	2.0%

* As a percentage of the amount invested.

Householding. Householding is an option available to certain Fund investors. Householding is a method of delivery, based on the preference of the individual investor, in which a single copy of certain shareholder documents can be delivered to investors who share the same address, even if their accounts are registered under different names. Please contact your broker-dealer if you are interested in enrolling in householding and receiving a single copy of prospectuses and other shareholder documents, or if you are currently enrolled in householding and wish to change your householding status.

Distribution

The Distributor distributes Creation Units for the Fund on an agency basis. The Distributor does not maintain a secondary market in shares of the Fund. The Distributor has no role in determining the policies of the Fund or the securities that are purchased or sold by the Fund. The Distributor's principal address is One Freedom Valley Drive, Oaks, PA 19456.

Financial Highlights

The financial highlights table is intended to help investors understand the Fund's financial performance for the past five years. Certain information reflects financial results for a single share of the Fund. The total returns in the table represent the rate that an investor would have earned (or lost) on an investment in the Fund, assuming reinvestment of all dividends and distributions. This information has been audited by PricewaterhouseCoopers LLP, whose report is included, along with the Fund's financial statements, in the Fund's Annual Report (available upon request).

Financial Highlights

(For a share outstanding throughout each year)

	Year ended Aug. 31, 2009	Year ended Aug. 31, 2008	Year ended Aug. 31, 2007	Year ended Aug. 31, 2006	Year ended Aug. 31, 2005
Net asset value, beginning of year	\$ 11.62	\$ 14.07	\$ 13.80	\$ 10.99	\$ 9.89
Income from investment operations:					
Net investment income ^a	0.13	0.14	0.10	0.06	0.06
Net realized and unrealized gain (loss) ^b	(1.39)	(2.39)	0.27	2.81	1.08
Total from investment operations	(1.26)	(2.25)	0.37	2.87	1.14
Less distributions from:					
Net investment income	(0.12)	(0.20)	(0.10)	(0.06)	(0.04)
Total distributions	(0.12)	(0.20)	(0.10)	(0.06)	(0.04)
Net asset value, end of year	\$ 10.24	\$ 11.62	\$ 14.07	\$ 13.80	\$ 10.99
Total return	(10.68)%	(16.13)%	2.68%	26.10%	11.58%
Ratios/Supplemental data:					
Net assets, end of year (000s)	\$6,164,170	\$7,499,536	\$11,780,006	\$13,724,590	\$7,248,107
Ratio of expenses to average net assets	0.56%	0.52%	0.52%	0.54%	0.57%
Ratio of net investment income to average net assets	1.46%	1.11%	0.68%	0.48%	0.59%
Portfolio turnover rate ^c	4%	4%	3%	8%	6%

^a Based on average shares outstanding throughout each period.

^b The amounts reported may not accord with the change in aggregate gains and losses in securities due to the timing of capital share transactions.

^c Portfolio turnover rates exclude portfolio securities received or delivered as a result of processing capital share transactions in Creation Units.

Index Provider

MSCI is a leading provider of global indexes and benchmark related products and services to investors worldwide. MSCI is not affiliated with the Company, BTC, BFA, State Street, the Distributor or any of their respective affiliates.

BTC has entered into a license agreement with the Index Provider to use the Underlying Index. BTC sublicenses rights in the Underlying Index to the Company at no charge.

Disclaimers

The Fund is not sponsored, endorsed, sold or promoted by MSCI or any affiliate of MSCI. Neither MSCI nor any other party makes any representation or warranty, express or implied, to the owners of this Fund or any member of the public regarding advisability of investing in funds generally or in this Fund particularly or the ability of the Underlying Index to track general stock market performance. MSCI is the licensor of certain trademarks, service marks and trade names of MSCI and of the Underlying Index which is determined, composed and calculated by MSCI without regard to the Company, BTC, BFA or the Fund. MSCI has no obligation to take the needs of the BTC, BFA or the owners of the Fund into consideration in determining, composing or calculating the Underlying Index. MSCI is not responsible for and has not participated in the determination of the timing of, prices at, or quantities of the Fund to be issued or in the determination or calculation of the equation by which the Fund is redeemable for cash. Neither MSCI nor any other party has any obligation or liability to owners of the Fund in connection with the administration, marketing or trading of the Fund.

Although MSCI shall obtain information for inclusion in or for use in the calculation of the indexes from sources which MSCI considers reliable, neither MSCI nor any other party guarantees the accuracy and/or the completeness of the indexes or any data included therein. Neither MSCI nor any other party makes any warranty, express or implied, as to results to be obtained by licensee, licensee's customers and counterparties, owners of the Fund, or any other person or entity from the use of the indexes or any data included hereunder or for any other use. Neither MSCI nor any other party makes any express or implied warranties, and MSCI hereby expressly disclaims all warranties of merchantability or fitness for a particular purpose with respect to the indexes or any data included therein. Without limiting any of the foregoing, in no event shall MSCI or any other party have any liability for direct, indirect, special, punitive, consequential or any other damages (including lost profits) even if notified of the possibility of such damages.

Shares of the Fund are not sponsored, endorsed or promoted by NYSE Arca. NYSE Arca makes no representation or warranty, express or implied, to the owners of the shares of the Fund or any member of the public regarding the ability of the Fund to track the total return performance of the Underlying Index or the ability of the Underlying Index to track stock market performance. NYSE Arca is not responsible for, nor has it participated in, the determination of the compilation or the calculation of the Underlying Index, nor in the determination of the timing of,

prices of, or quantities of shares of the Fund to be issued, nor in the determination or calculation of the equation by which the shares are redeemable. NYSE Arca has no obligation or liability to owners of the shares of the Fund in connection with the administration, marketing or trading of the shares of the Fund.

NYSE Arca does not guarantee the accuracy and/or the completeness of the Underlying Index or any data included therein. NYSE Arca makes no warranty, express or implied, as to results to be obtained by the Company on behalf of the Fund as licensee, licensee's customers and counterparties, owners of the shares of the Fund, or any other person or entity from the use of the subject index or any data included therein in connection with the rights licensed as described herein or for any other use. NYSE Arca makes no express or implied warranties and hereby expressly disclaims all warranties of merchantability or fitness for a particular purpose with respect to the Underlying Index or any data included therein. Without limiting any of the foregoing, in no event shall NYSE Arca have any liability for any direct, indirect, special, punitive, consequential or any other damages (including lost profits) even if notified of the possibility of such damages.

BFA does not guarantee the accuracy or the completeness of the Underlying Index or any data included therein and BFA shall have no liability for any errors, omissions or interruptions therein.

BFA makes no warranty, express or implied, to the owners of shares of the Fund or to any other person or entity, as to results to be obtained by the Fund from the use of the Underlying Index or any data included therein. BFA makes no express or implied warranties and expressly disclaims all warranties of merchantability or fitness for a particular purpose or use with respect to the Underlying Index or any data included therein. Without limiting any of the foregoing, in no event shall BFA have any liability for any special, punitive, direct, indirect or consequential damages (including lost profits), even if notified of the possibility of such damages.

Supplemental Information

I. Premium/Discount Information

The table that follows presents information about the differences between the daily market price on secondary markets for shares of the Fund and the Fund's NAV. NAV is the price per share at which the Fund issues and redeems shares. It is calculated in accordance with the standard formula for valuing mutual fund shares. The price used to calculate market returns ("Market Price") of the Fund generally is determined using the midpoint between the highest bid and the lowest offer on the primary securities exchange on which shares of the Fund are listed for trading, as of the time that the Fund's NAV is calculated. The Fund's Market Price may be at, above or below its NAV. The NAV of the Fund will fluctuate with changes in the market value of its portfolio holdings. The Market Price of the Fund will fluctuate in accordance with changes in its NAV, as well as market supply and demand.

Premiums or discounts are the differences (expressed as a percentage) between the NAV and Market Price of the Fund on a given day, generally at the time the NAV is calculated. A premium is the amount that the Fund is trading above the reported NAV, expressed as a percentage of the NAV. A discount is the amount that the Fund is trading below the reported NAV, expressed as a percentage of the NAV.

The following information shows the frequency of distributions of premiums and discounts for the Fund for each full calendar quarter of 2008 through September 30, 2009.

Each line in the table shows the number of trading days in which the Fund traded within the premium/discount range indicated. The number of trading days in each premium/discount range is also shown as a percentage of the total number of trading days in the period covered by the table. All data presented here represents past performance, which cannot be used to predict future results.

<u>Premium/Discount Range</u>	<u>Number of Days</u>	<u>Percentage of Total Days</u>
Greater than 6.0%	2	0.45%
Greater than 5.5% and Less than 6.0%	1	0.23
Greater than 5.0% and Less than 5.5%	2	0.45
Greater than 4.5% and Less than 5.0%	3	0.68
Greater than 4.0% and Less than 4.5%	4	0.91
Greater than 3.5% and Less than 4.0%	7	1.59
Greater than 3.0% and Less than 3.5%	3	0.68
Greater than 2.5% and Less than 3.0%	13	2.95
Greater than 2.0% and Less than 2.5%	12	2.73
Greater than 1.5% and Less than 2.0%	26	5.91
Greater than 1.0% and Less than 1.5%	31	7.05
Greater than 0.5% and Less than 1.0%	53	12.05
Between 0.5% and -0.5%	122	27.72
Less than -0.5% and Greater than -1.0%	42	9.55
Less than -1.0% and Greater than -1.5%	36	8.18
Less than -1.5% and Greater than -2.0%	27	6.14
Less than -2.0% and Greater than -2.5%	16	3.64
Less than -2.5% and Greater than -3.0%	11	2.50
Less than -3.0% and Greater than -3.5%	7	1.59
Less than -3.5% and Greater than -4.0%	5	1.14
Less than -4.0% and Greater than -4.5%	6	1.36
Less than -4.5% and Greater than -5.0%	2	0.45
Less than -5.0% and Greater than -5.5%	4	0.91
Less than -5.5%	5	1.14
	<u>440</u>	<u>100.00%</u>

II. Total Return Information

The tables that follow present information about the total returns of the Fund's Underlying Index and the total returns of the Fund. The information presented for the Fund is as of its fiscal year ended August 31, 2009.

"Average Annual Total Returns" represent the average annual change in value of an investment over the periods indicated. "Cumulative Total Returns" represent the total change in value of an investment over the periods indicated.

The Fund's per share NAV is the value of one share of the Fund as calculated in accordance with the standard formula for valuing mutual fund shares. The NAV return is based on the NAV of the Fund and the market return is based on the Market Price of the Fund. The price used to calculate Market Price is determined by using the midpoint between the highest bid and the lowest offer on the primary stock exchange on which shares of the Fund are listed for trading, as of the time that the Fund's NAV is calculated. Market and NAV returns assume that dividends and capital gain distributions have been reinvested in the Fund at Market Price and NAV, respectively.

An index is a statistical composite that tracks a specified financial market or sector. Unlike the Fund, the Underlying Index does not actually hold a portfolio of securities and therefore does not incur the expenses incurred by the Fund. These expenses negatively impact the performance of the Fund. Also, market returns do not include brokerage commissions that may be payable on secondary market transactions. If brokerage commissions were included, market returns would be lower. The returns shown in the tables below do not reflect the deduction of taxes that a shareholder would pay on Fund distributions or the redemption or sale of Fund shares. The investment return and principal value of shares of the Fund will vary with changes in market conditions. Shares of the Fund may be worth more or less than their original cost when they are redeemed or sold in the market. The Fund's past performance is no guarantee of future results.

Performance as of August 31, 2009

Average Annual Total Returns								
<i>Year Ended 8/31/09</i>			<i>Five Years Ended 8/31/09</i>			<i>Ten Years Ended 8/31/09</i>		
<i>NAV</i>	<i>MARKET</i>	<i>INDEX</i>	<i>NAV</i>	<i>MARKET</i>	<i>INDEX</i>	<i>NAV</i>	<i>MARKET</i>	<i>INDEX</i>
(10.68)%	(9.45)%	(10.17)%	1.59%	1.37%	2.11%	(1.70)%	(1.83)%	(1.26)%

Cumulative Total Returns								
<i>Year Ended 8/31/09</i>			<i>Five Years Ended 8/31/09</i>			<i>Ten Years Ended 8/31/09</i>		
<i>NAV</i>	<i>MARKET</i>	<i>INDEX</i>	<i>NAV</i>	<i>MARKET</i>	<i>INDEX</i>	<i>NAV</i>	<i>MARKET</i>	<i>INDEX</i>
(10.68)%	(9.45)%	(10.17)%	8.22%	7.03%	11.00%	(15.77)%	(16.87)%	(11.91)%

[THIS PAGE INTENTIONALLY LEFT BLANK]



Dear iShares Shareholder:

Electronic delivery is the easiest, most convenient way to receive reporting on your iShares holdings. In addition, it's a way we can all care for our environment. To that end, we are pleased to offer shareholder reports and prospectuses online.

Once you have enrolled, you will no longer receive shareholder reports and prospectuses in the mail. Instead, you will receive e-mail notifications announcing that the shareholder report or prospectus has been posted on the iShares website at www.iShares.com and is available to be viewed or downloaded.

To sign up for electronic delivery, please follow these simple steps:

1. Go to www.icsdelivery.com.
2. From the main page, select the first letter of your brokerage firm's name.
3. Select your brokerage institution from the list that follows. If your brokerage firm is not listed, electronic delivery may not be available. Please contact your brokerage firm or financial adviser.
4. Fill out the appropriate information and provide the e-mail address where you would like your notifications sent.

Your information and e-mail address will be kept confidential and only used to deliver documents to you. If at any time you are not satisfied, you can cancel electronic delivery at www.icsdelivery.com and once again receive physical delivery of your materials. If you have any questions, please contact your brokerage firm or financial adviser.

For more information:

WWW.ISHARES.COM

1-800-iShares (1-800-474-2737)

Copies of the Prospectus, SAI and recent shareholder reports can be found on our website at www.iShares.com. For more information about the Fund, you may request a copy of the SAI. The SAI provides detailed information about the Fund and is incorporated by reference into this Prospectus. This means that the SAI, for legal purposes, is a part of this Prospectus.

Additional information about the Fund's investments is available in the Fund's Annual and Semi-Annual reports to shareholders. In the Fund's Annual Report, you will find a discussion of the market conditions and investment strategies that significantly affected the Fund's performance during the last fiscal year.

If you have any questions about the Company or shares of the Fund or you wish to obtain the SAI, Semi-Annual or Annual report free of charge, please:

Call: 1-800-iShares or 1-800-474-2737 (toll free)
Monday through Friday, 8:30 a.m. to 6:30 p.m. (Eastern time)

E-mail: iSharesETFs@blackrock.com

Write: c/o SEI Investments Distribution Co.
One Freedom Valley Drive Oaks, PA 19456

Information about the Fund (including the SAI) can be reviewed and copied at the SEC's Public Reference Room in Washington, D.C., and information on the operation of the Public Reference Room may be obtained by calling the SEC at 1-202-551-8090. Reports and other information about the Fund are available on the EDGAR Database on the SEC's website at www.sec.gov, and copies of this information may be obtained, after paying a duplicating fee, by electronic request at the following e-mail address: publicinfo@sec.gov, or by writing to the SEC's Public Reference Section, Washington, D.C. 20549-1520.

No person is authorized to give any information or to make any representations about the Fund and its shares not contained in this Prospectus and you should not rely on any other information. Read and keep the Prospectus for future reference.

Investment Company Act File No.: 811-09102

IS-P-EWJ-0110



BLACKROCK