

## Quarterly Activities Report – 30 June 2021

Tesoro Resources Limited (ASX: TSO) (**Tesoro** or the **Company**) is pleased to provide the following activities report that outlines progress achieved during the June 2021 Quarter.

### HIGHLIGHTS

- Tesoro completes record drilling at the El Zorro Gold Project (**El Zorro**) during the June quarter, **58 holes** completed for **19,325 metres**.
- Assay results received for 31 holes, including initial results from the Ternera East discovery.
- New gold discovery at Ternera East within the hanging wall zone of the Ternera Gold Deposit returned positive first drill results:
  - ZDDH0149**
    - 21.28m @ 0.34g/t Au from 97.50m including:
    - 4.50m @ 1.14g/t Au from 105.00m; and
    - 36.00m @ 0.40g/t Au from 243.00m including:
    - 4.00m @ 1.69g/t Au from 249.00m; and
    - 1.05m @ 1.77g/t Au from 272.95m.
  - Hole **ZDDH0149** expands the drilled Ternera Gold System approximately 500m to the east and demonstrates potential for additional gold mineralisation outside of Ternera.
  - A second hole at Ternera East (ZDDH0166) has intercepted gold host rocks up to 100m thick, assays pending.
  - Significant intercepts reported during the June Quarter include:
    - ZDDH0128**
      - 0.91m @ 7.59g/t Au from 78.29m; and
      - 7.00m @ 3.22g/t Au from 103.00m.
    - ZDDH0131**
      - 25.00m @ 2.11g/t Au from 119.00m including:
      - 0.59m @ 63.10g/t Au from 120.00m; and
      - 1.00m @ 38.30g/t Au from 176.00m.
    - ZDDH0135**
      - 12.00m @ 3.34g/t Au from 334.00m including:
      - 1.50m @ 25.22g/t Au from 334.00m.
    - ZDDH0133**
      - 27.00m @ 1.18g/t Au from 267.00m including:
      - 8.00m @ 3.17g/t Au from 267.00m.
    - ZDDH0136**
      - 107.00m @ 0.49 /t Au from 239.00m including:
      - 37.00m @ 1.01g/t Au from 287.00m.
- In total, Tesoro has completed 190 diamond drillholes at El Zorro for 58,555 metres.
- Assays remain outstanding for 57 diamond drill holes.
- Ternera gold mineralisation remains open in all directions and drilling continues, with six drill rigs operating 24/7.

- Resource modelling is well advanced in preparation for an initial Maiden Resource Estimate (**MRE**) at El Zorro, with a further Resource Estimate expected to be released during the September 2021 quarter.
- Approximately 550 kilograms of metallurgical testwork samples have been collected from drill cores and received by the laboratory for detailed metallurgical testwork.
- Preliminary permitting activities and project studies are advancing to assess the mining potential at El Zorro.
- Tesoro continues to efficiently deploy capital with approximately 93% of cash deployed during the quarter attributed directly to exploration and development costs (approx. 90% YTD).
- The Company remains well funded, with cash balance of approximately \$13.73 million as at 30 June 2021.

## Overview

Tesoro holds interests in the highly prospective El Zorro gold exploration project located within the Coastal Cordillera of Chile. El Zorro is favourably located and demonstrates significant scale and gold grades.

Tesoro is focussed on delineating gold resources at El Zorro, where drilling continued during the quarter to further define the Ternera Gold Deposit and undertake initial drill testing of the Ternera East target. During the quarter, 58 holes were completed for 19,325 metres, the most metres completed by Tesoro at El Zorro in a quarter since drilling commenced in February 2020. Assay results were received for 31 holes with assays outstanding for 57 holes as at period end.

## Ternera East Prospect

Hole ZDDH0149 is the first of two holes drilled to test the newly discovered Ternera East Target at El Zorro. Assay results for ZDDH0149 were given priority through the laboratory to allow rapid planning of additional drilling. The second hole, ZDDH0166, is awaiting assays.

Ternera East was initially identified from geological mapping, sampling and geophysics which identified multiple outcropping bodies of the El Zorro Tonalite (**EZT**), the favourable gold host rock at El Zorro.

Hole ZDDH0149 intercepted multiple small tonalite bodies up to 20m wide, with two zones of gold mineralisation returned. An occurrence of visible gold was noted during logging at 252.00m down hole. This gold mineralisation is significant as it verifies that the EZT remains well mineralised outside of the Ternera Gold Deposit, providing significant scope to define additional gold resources at El Zorro. Furthermore, the newly discovered mineralised EZT bodies occur within the hanging wall zone of the main Ternera Deposit providing potential to enhance the mining economics of any potential open pit mining operation through a reduced stripping ratio.

An additional hole, ZDDH0166 was drilled approximately 85m south of hole ZDDH0149 and logging has identified a larger near surface EZT body from 13.60m to 119.50m down hole and multiple deeper EZT bodies from 197.50m to 225.40m and 327.50m to 342.20m.

The discovery of these new bodies of mineralised EZT at Ternera East has the potential to add additional gold resources to the Ternera Deposit. Further drilling at Ternera East is being prioritised.

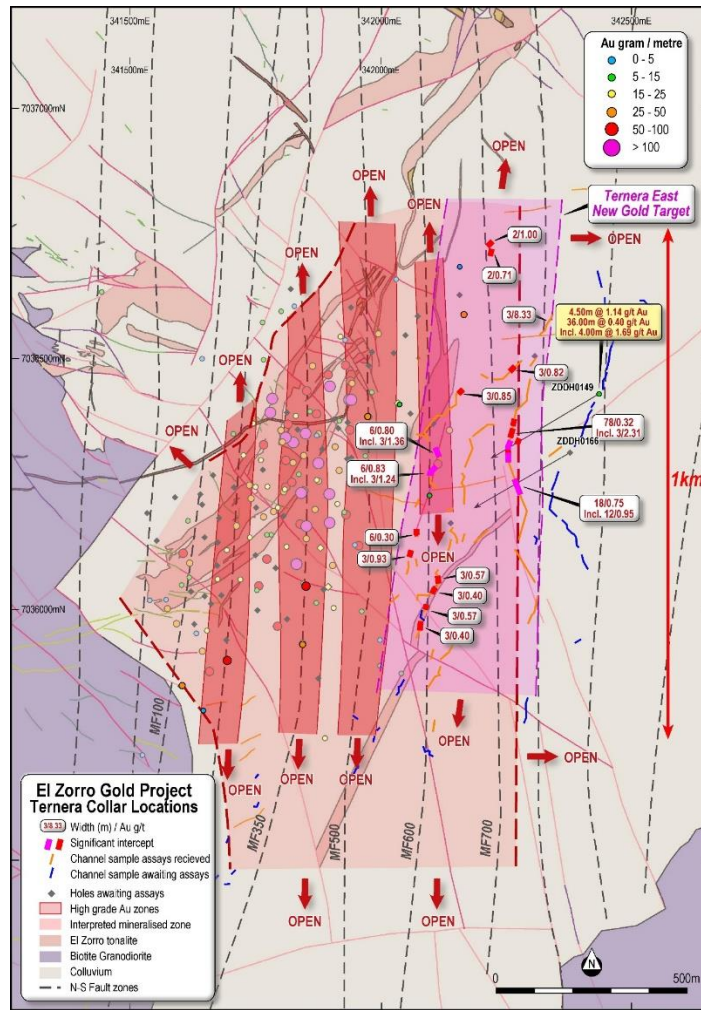


Figure 1: Ternera Drilling - Collar locations on geology. Results reported in this announcement are noted in gold highlight. Ternera East Surface sampling results shown in white. PSAD56/19S datum. Section line shown in blue.

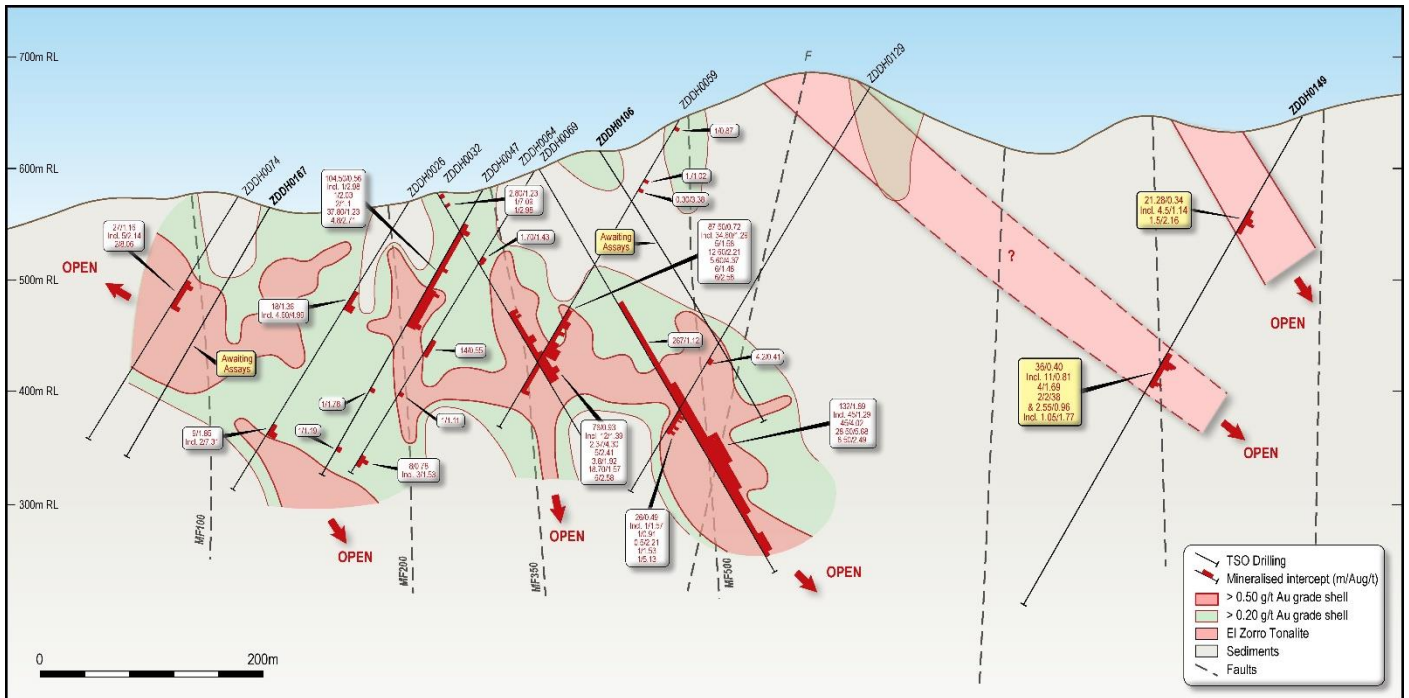


Figure 2: Ternera Drill Section - 140m looking northwest. Hole ZDDH0149 gold mineralisation shown in gold, occurring within the hanging wall of the Ternera Gold Deposit.

## **Tenera Deposit**

At Tenera, drilling focussed on infill and resource definition drilling to provide sufficient information to calculate an MRE at El Zorro. Assay results received to date continue to confirm the importance of the north-south trending fault zones (**MF Faults**) as high-grade gold zones within the broader Tenera Deposit. To date six of the MF Faults have been drilled, all returning positive drill results. Two new MF Faults were identified by drilling during the quarter (MF700 and MF800) further increasing the size of the mineralised system at Tenera.

Significant results were returned from extension drilling in the south of the deposit, which returned multiple high-grade intercepts with a wide body of mineralised EZT associated with the MF350, MF500 and MF600 faults. Mineralisation remains open to the south and further extensional drilling is planned.

A full table of significant intercepts is presented in Appendix 1.

Drilling continues 24/7 focusing on infill and extensional drilling at Tenera, as well as further delineation of the Tenera east zone. The Company also plans to drill additional holes at Drone Hill during the September 2021 quarter.

## **El Zorro Studies**

Work continued through the quarter in preparation of an initial MRE for El Zorro. Work also advanced on Mining and Development Studies at El Zorro, which included the completion of a detailed topographical survey over the Tenera Gold Deposit and along the proposed infrastructure corridor to access the project from the Pan American Highway, approximately 13km to the west of Tenera.

A detailed metallurgical testwork program commenced during the quarter with approximately 550kg consisting of 11 composite samples selected from drill core having been submitted to ALS Metallurgy in Perth Western Australia for testing. The results for this work are expected to be received during the September 2021 quarter.

## **The Quarter Ahead**

The Company expects to meet several significant milestones during the September 2021 quarter as it continues to define and expand the Tenera Gold Deposit at El Zorro.

It is expected that an initial JORC Compliant MRE will be completed during the quarter which will form the basis of a high-level Scoping Study to begin to define the project for mining. As part of the Scoping Study detailed metallurgical testwork results will become available during the quarter to define the optimal processing pathway for material from the Tenera Deposit.

Tesoro has planned an additional 50,000m of drilling to be completed during 2021 to further expand the Tenera resource.

Drilling at Tenera planned for the September 2021 quarter will a focus on further expansion of the mineralised areas as well as testing additional targets at Tenera East and Drone Hill.

## **Corporate**

### **Use of Funds**

The Company confirms that during the quarter ended 30 June 2021, it has used the funds raised pursuant to the Company's Prospectus dated 30 October 2019 and Supplementary Prospectus' dated 10 December 2019 and 29 January 2020 consistently with the "use of funds" statement in the Prospectus. A comparison of actual expenditure since the Company's re-listing on ASX follows:



	<b>Prospectus (24 month period) \$</b>	<b>Actual Q4 FY21 \$</b>	<b>Actual TOTAL \$</b>
El Zorro Exploration	2,175,000	4,964,743	13,381,654
Espina Exploration and Earn-in Expenditure	850,000	-	55,900
Project Payments	295,000	-	264,092
Partial repayment of Director Loan to entities associated with Geoffrey McNamara	75,000		75,000
Costs of the Offer	485,990	-	557,358
Corporate overheads and administration costs	830,000	-	830,000
Administration costs and working capital	189,010	453,481	1,912,422
<b>Total</b>	<b>4,900,000</b>	<b>5,418,225</b>	<b>16,246,426</b>

### Payments to Related Parties

As outlined in the Appendix 5B for the quarter ending 30 June 2021 (sections 6.1 and 6.2), during the quarter approximately \$95,000 in payments were made to related parties and/or their associates as remuneration (inc superannuation) for the Managing Director, Non-Executive Director fees and consulting fees.

Authorised by the Board of Tesoro Resources Limited.

### For more information:

#### Company:

Zeff Reeves, Managing Director  
Tesoro Resources Limited  
+61 8 9322 1587

#### Investors:

Peter Taylor  
NWR Communications  
+61 (0) 412 036 231  
peter@nwrcommunications.com.au

### About Tesoro

Tesoro Resources Limited was established with a strategy of acquiring, exploring, and developing mining projects in the Coastal Cordillera region of Chile. The Coastal Cordillera region is host to multiple world class copper and gold mines, has well established infrastructure, service providers and an experienced mining workforce. Large areas of the Coastal Cordillera remain unexplored due to the unconsolidated nature of mining concession ownership, but Tesoro, via its in-country network and experience has been able secure rights to a district scale gold project in-line with the Company's strategy. Tesoro's 95% owned Chilean Subsidiary owns 85% of the El Zorro Gold Project.



## **Future Performance**

This announcement may contain certain forward-looking statements and opinion. Forward-looking statements, including projections, forecasts and estimates, are provided as a general guide only and should not be relied on as an indication or guarantee of future performance and involve known and unknown risks, uncertainties, assumptions, contingencies and other important factors, many of which are outside the control of the Company and which are subject to change without notice and could cause the actual results, performance or achievements of the Company to be materially different from the future results, performance or achievements expressed or implied by such statements. Past performance is not necessarily a guide to future performance and no representation or warranty is made as to the likelihood of achievement or reasonableness of any forward looking statements or other forecast. Nothing contained in this announcement nor any information made available to you is, or and shall be relied upon as, a promise, representation, warranty or guarantee as to the past, present or the future performance of Tesoro.

## **Competent Persons Statement**

The information in this report that relates to Exploration Results is based on information compiled by Mr Zeffron Reeves (B App Sc (Hons) Applied Geology) MBA, MAIG). Mr Reeves is a member of the Australian Institute of Geoscientists and a Director and major shareholder of the Company. Mr Reeves has sufficient experience that is relevant to the style of mineralisation and type of deposit under consideration and to the activity which he is undertaking to qualify as a Competent Person as defined in the 2012 Edition of the Australasian Code for Reporting of Exploration Results, Mineral Resources and Ore Reserves. Mr Reeves consents to the inclusion in this report of the matters based on this information in the form and context in which it appears.

**Appendix 1 – Significant Intercept Table**

Hole_ID	From (m)	To (m)	Interval	Au (g/t)	Comments
ZDDH0001	5.00	119.00	114.00	0.35	
ZDDH0001	5.00	15.00	10.00	0.55	including
ZDDH0001	5.00	51.30	46.30	0.45	including
ZDDH0001	12.00	13.00	1.00	1.64	including
ZDDH0001	14.30	15.00	0.70	2.35	including
ZDDH0001	33.64	39.00	5.36	0.97	including
ZDDH0001	44.30	51.30	7.00	0.67	including
ZDDH0001	64.00	65.00	1.00	2.50	including
ZDDH0001	75.50	79.00	3.50	0.89	including
ZDDH0001	75.50	76.00	0.50	4.82	including
ZDDH0001	107.00	112.00	5.00	1.11	including
ZDDH0001	117.00	119.00	2.00	2.05	including
ZDDH0002	5.70	68.00	62.30	0.54	
ZDDH0002	8.80	24.30	15.50	1.15	including
ZDDH0002	8.80	14.00	5.20	1.96	including
ZDDH0002	51.70	68.00	16.30	0.78	including
ZDDH0002	58.00	61.00	3.00	3.62	including
ZDDH0003	21.00	77.30	56.30	0.50	
ZDDH0003	21.00	27.00	6.00	1.96	including
ZDDH0003	21.00	22.83	1.83	5.24	including
ZDDH0003	37.20	43.00	5.80	1.27	including
ZDDH0003	47.30	48.00	0.70	2.00	including
ZDDH0003	64.00	77.30	13.30	0.41	including
ZDDH0003	90.00	91.00	1.00	1.53	
ZDDH0004	5.00	66.00	61.00	0.97	
ZDDH0004	56.00	66.00	10.00	4.53	including
ZDDH0004	57.00	61.00	4.00	9.60	including
ZDDH0005	4.00	42.65	38.65	0.65	
ZDDH0005	4.00	32.00	28.00	0.84	including
ZDDH0005	9.80	28.00	18.20	1.17	including
ZDDH0005	9.80	10.15	0.35	20.10	including
ZDDH0005	51.60	52.00	0.40	2.03	
ZDDH0005	65.00	67.00	2.00	1.03	
ZDDH0005	72.00	85.90	13.90	0.52	
ZDDH0005	72.00	75.00	3.00	1.90	including
ZDDH0005	72.00	73.00	1.00	4.32	including
ZDDH0005	100.60	102.00	1.40	2.07	
ZDDH0005	130.00	132.60	2.60	0.66	
ZDDH0005	135.80	136.80	1.00	12.20	
ZDDH0005	0.00	88.00	88.00	0.15	
ZDDH0006	2.40	3.00	0.60	0.75	including
ZDDH0006	22.60	25.95	3.35	2.14	including
ZDDH0006	24.00	25.00	1.00	6.10	including
ZDDH0006	46.70	50.30	3.60	0.32	including
ZDDH0006	61.10	64.02	2.92	0.42	including
ZDDH0006	108.30	116.00	7.70	0.30	including
ZDDH0006	133.50	135.60	2.10	1.30	including
ZDDH0006	148.00	151.80	3.80	0.59	including
ZDDH0006	180.10	244.00	63.90	0.23	including
ZDDH0006	180.10	181.10	1.00	0.55	including
ZDDH0006	184.00	186.00	2.00	1.06	including
ZDDH0006	207.00	212.00	5.00	0.77	including
ZDDH0006	226.00	227.00	1.00	0.55	including
ZDDH0006	236.00	244.00	8.00	0.66	including
ZDDH0007	1.00	4.00	3.00	4.75	
ZDDH0007	39.00	66.20	27.20	0.70	
ZDDH0007	39.00	58.00	19.00	0.80	including
ZDDH0007	104.85	110.00	5.15	0.34	
ZDDH0007	117.40	118.00	0.60	2.75	
ZDDH0008	35.00	41.10	6.10	0.28	
ZDDH0008	58.00	59.00	1.00	1.43	

Hole_ID	From (m)	To (m)	Interval	Au (g/t)	Comments
ZDDH0009	4.00	6.00	2.00	1.39	
ZDDH0009	12.55	38.00	25.45	0.51	
ZDDH0009	21.00	26.00	5.00	1.09	including
ZDDH0009	48.00	48.50	0.50	2.19	
ZDDH0009	78.00	83.00	5.00	0.59	
ZDDH0010	31.00	33.00	2.00	2.47	
ZDDH0010	60.00	61.00	1.00	1.16	
ZDDH0010	66.00	67.00	1.00	1.04	
ZDDH0010	75.00	159.30	84.30	1.30	
ZDDH0010	75.00	104.00	29.00	2.95	including
ZDDH0010	82.50	86.45	3.95	4.97	including
ZDDH0010	91.00	102.00	11.00	4.70	including
ZDDH0010	93.00	97.00	4.00	8.50	including
ZDDH0010	120.00	126.00	6.00	1.11	including
ZDDH0010	149.00	159.00	10.00	1.07	including
ZDDH0011	176.00	274.30	98.30	1.58	
ZDDH0011	181.70	212.00	30.30	3.03	including
ZDDH0011	196.40	212.00	15.60	3.87	including
ZDDH0011	203.00	203.70	0.70	21.70	including
ZDDH0011	203.00	212.00	9.00	5.07	including
ZDDH0011	217.00	222.00	5.00	4.13	including
ZDDH0011	246.60	256.40	9.80	2.28	including
ZDDH0012	0.00	58.80	58.80	1.70	
ZDDH0012	1.70	22.00	20.30	4.50	including
ZDDH0012	1.70	8.40	6.70	12.21	including
ZDDH0012	2.30	4.70	2.40	33.35	including
ZDDH0012	17.60	22.00	4.40	2.00	including
ZDDH0012	17.60	20.00	2.40	2.82	including
ZDDH0012	53.20	58.80	5.60	0.95	
ZDDH0012	53.20	56.00	2.80	1.42	including
ZDDH0012	151.80	152.20	0.40	2.29	
ZDDH0013	0.00	3.00	3.00	0.83	
ZDDH0013	9.00	14.30	5.30	0.41	
ZDDH0013	25.00	29.80	4.80	0.72	
ZDDH0013	28.55	29.80	1.25	2.14	including
ZDDH0013	46.30	70.00	23.70	0.85	
ZDDH0013	46.30	51.50	5.20	1.24	including
ZDDH0013	51.25	65.35	14.10	1.08	including
ZDDH0013	58.00	65.35	7.35	1.65	including
ZDDH0013	102.00	104.00	2.00	0.79	
ZDDH0013	136.00	137.30	1.30	4.97	
ZDDH0013	165.00	173.60	8.60	1.60	
ZDDH0013	170.40	173.00	2.60	2.80	including
ZDDH0014	15.30	70.60	55.30	1.01	
ZDDH0014	15.30	34.00	18.70	2.19	including
ZDDH0014	15.30	26.30	11.00	3.40	including
ZDDH0014	23.00	26.30	3.30	6.18	including
ZDDH0014	64.60	70.60	6.00	2.03	including
ZDDH0014	64.60	67.35	2.75	5.00	including
ZDDH0014	112.00	122.50	10.50	0.52	
ZDDH0014	115.00	117.00	2.00	1.75	including
ZDDH0014	177.20	179.00	1.80	2.37	
ZDDH0015	37.90	39.70	1.80	1.11	
ZDDH0015	91.90	132.70	40.80	0.37	
ZDDH0015	91.90	94.60	2.70	1.64	including
ZDDH0015	112.00	116.00	4.00	1.13	including
ZDDH0015	240.60	242.00	1.40	8.46	
ZDDH0015	265.90	269.00	3.10	0.64	
ZDDH0016	125.00	131.72	6.72	1.47	
ZDDH0016	152.00	204.60	52.60	0.62	
ZDDH0016	188.10	194.00	5.90	3.30	including
ZDDH0016	188.58	188.90	0.32	31.30	including
ZDDH0016	203.60	204.60	1.00	3.00	including
ZDDH0016	281.00	290.00	9.00	0.36	
ZDDH0016	287.50	290.00	2.50	0.77	including

Hole_ID	From (m)	To (m)	Interval	Au (g/t)	Comments
ZDDH0017	44.00	74.00	30.00	0.94	
ZDDH0017	44.00	60.10	16.10	1.05	including
ZDDH0017	44.00	47.00	3.00	4.27	including
ZDDH0017	70.00	74.00	4.00	4.26	including
ZDDH0017	103.46	105.60	2.14	1.76	
ZDDH0017	167.55	254.00	86.45	2.29	including
ZDDH0017	182.70	233.20	50.50	3.63	including
ZDDH0017	183.22	206.22	23.00	7.20	including
ZDDH0017	190.00	205.00	15.00	10.82	including
ZDDH0017	197.00	202.30	5.30	25.31	including
ZDDH0017	200.00	202.30	2.30	46.41	including
ZDDH0018	187.27	222.00	34.73	2.94	
ZDDH0018	187.27	211.00	23.73	4.09	including
ZDDH0018	197.00	199.70	2.70	22.21	including
ZDDH0018	189.00	204.00	15.00	5.99	including
ZDDH0019	21.00	89.52	68.52	0.47	
ZDDH0019	36.00	45.00	9.00	1.34	including
ZDDH0019	74.00	79.00	5.00	1.23	including
ZDDH0020	87.30	87.60	0.30	3.33	
ZDDH0021	100.92	116.50	15.58	0.95	
ZDDH0021	107.50	112.00	4.50	1.24	including
ZDDH0021	100.92	101.70	0.78	8.44	including
ZDDH0021	189.25	208.50	19.25	2.86	open downhole
ZDDH0021	189.25	201.30	12.05	4.25	including
ZDDH0021	189.25	195.40	6.15	7.37	including
ZDDH0021	193.90	195.40	1.50	20.82	including
ZDDH0022	30.00	31.00	1.00	3.16	
ZDDH0022	78.00	119.17	41.17	1.38	
ZDDH0022	94.40	95.45	1.05	2.98	including
ZDDH0022	105.00	119.17	14.17	3.25	including
ZDDH0022	105.00	110.32	5.32	6.54	including
ZDDH0023	146.70	151.00	4.30	7.25	
ZDDH0023	146.70	149.00	2.30	13.30	including
ZDDH0023	273.00	277.00	4.00	1.06	
ZDDH0023	276.00	277.00	1.00	3.32	including
ZDDH0024	6.00	9.00	3.00	1.63	
ZDDH0024	41.00	78.00	37.00	0.86	
ZDDH0024	41.00	45.50	4.50	2.12	including
ZDDH0024	44.10	45.50	1.40	5.93	including
ZDDH0024	54.50	57.00	2.50	1.87	including
ZDDH0024	56.50	69.50	13.00	1.12	including
ZDDH0024	66.00	69.50	3.50	2.53	including
ZDDH0024	155.00	169.00	14.00	3.06	
ZDDH0024	162.20	163.50	1.30	19.72	including
ZDDH0024	161.80	167.00	5.20	6.97	including
ZDDH0025	49.00	170.55	121.55	1.32	
ZDDH0025	73.10	84.00	10.90	4.57	including
ZDDH0025	75.00	82.00	7.00	6.14	including
ZDDH0025	104.00	118.00	14.00	1.63	including
ZDDH0025	110.00	113.60	3.60	4.97	including
ZDDH0025	148.00	160.27	12.27	4.98	including
ZDDH0025	148.00	170.55	22.55	2.98	including
ZDDH0025	155.20	159.90	4.70	10.69	including
ZDDH0026	92.00	110.00	18.00	1.36	
ZDDH0026	105.40	110.00	4.60	4.99	including
ZDDH0026	233.00	242.00	9.00	1.85	
ZDDH0026	240.00	242.00	2.00	7.31	including
ZDDH0027	176.00	206.50	30.50	0.40	
ZDDH0027	176.00	202.00	26.00	0.44	including
ZDDH0027	176.00	188.00	12.00	0.64	including
ZDDH0027	176.00	182.00	6.00	1.21	including

Hole_ID	From (m)	To (m)	Interval	Au (g/t)	Comments
ZDDH0028	14.00	14.75	0.75	3.23	
ZDDH0028	21.00	28.00	7.00	0.85	
ZDDH0028	25.00	25.90	0.90	5.03	including
ZDDH0028	42.00	49.00	7.00	0.61	
ZDDH0028	43.90	45.00	1.10	1.10	including
ZDDH0029	29.50	243.00	213.50	0.73	
ZDDH0029	29.50	93.00	63.50	1.81	including
ZDDH0029	29.50	31.20	1.70	1.20	including
ZDDH0029	43.00	48.00	5.00	2.76	including
ZDDH0029	56.64	61.84	5.20	3.36	including
ZDDH0029	72.00	80.00	8.00	1.24	including
ZDDH0029	91.00	93.00	2.00	33.00	including
ZDDH0029	121.00	130.70	9.70	0.53	
ZDDH0029	121.00	122.00	1.00	3.20	including
ZDDH0029	166.30	195.00	28.70	0.82	
ZDDH0029	180.00	195.00	15.00	1.33	including
ZDDH0030	5.20	6.40	1.20	0.74	
ZDDH0030	50.00	76.00	26.00	0.69	
ZDDH0030	66.00	76.00	10.00	1.54	including
ZDDH0030	66.00	71.10	5.10	2.64	including
ZDDH0030	66.00	67.00	1.00	6.89	including
ZDDH0030	70.00	71.10	1.10	5.73	including
ZDDH0030	101.00	102.50	1.50	1.13	
ZDDH0030	117.00	120.00	3.00	3.23	
ZDDH0030	117.00	119.13	2.13	4.15	including
ZDDH0030	165.00	167.00	2.00	4.05	
ZDDH0030	199.40	199.00	3.60	1.41	open downhole
ZDDH0030	202.95	203.90	0.95	5.12	open downhole
ZDDH0031	72.00	303.00	231.00	0.83	
ZDDH0031	72.00	126.00	54.00	1.69	
ZDDH0031	72.00	75.60	3.60	1.27	including
ZDDH0031	100.00	104.44	4.44	1.04	including
ZDDH0031	100.00	125.00	25.00	3.36	including
ZDDH0031	118.30	125.00	6.70	11.57	including
ZDDH0031	146.40	154.00	7.60	0.79	including
ZDDH0031	171.60	173.00	1.40	1.40	including
ZDDH0031	193.30	217.60	24.30	2.43	including
ZDDH0031	193.30	208.00	14.70	3.77	including
ZDDH0031	193.30	197.00	3.70	4.16	including
ZDDH0031	204.34	217.60	13.26	3.25	including
ZDDH0031	204.34	208.00	3.66	10.76	including
ZDDH0031	228.00	229.00	1.00	2.17	including
ZDDH0031	248.00	263.90	15.90	1.04	including
ZDDH0031	291.00	295.00	4.00	1.00	including
ZDDH0032	3.20	6.00	2.80	1.23	
ZDDH0032	17.30	18.30	1.00	7.09	
ZDDH0032	43.50	44.00	0.50	5.70	
ZDDH0032	75.00	76.00	1.00	5.02	
ZDDH0032	128.00	204.00	76.00	0.93	
ZDDH0032	128.00	140.00	12.00	1.39	including
ZDDH0032	132.63	135.00	2.37	4.30	including
ZDDH0032	157.00	162.00	5.00	2.41	including
ZDDH0032	171.00	174.80	3.80	1.92	including
ZDDH0032	178.30	197.00	18.70	1.57	including
ZDDH0032	178.30	179.40	1.10	5.15	including
ZDDH0032	191.00	197.00	6.00	2.58	including
ZDDH0033	40.00	68.00	28.00	1.22	
ZDDH0033	57.00	67.00	10.00	3.17	including
ZDDH0033	59.00	63.00	4.00	5.96	including
ZDDH0033	100.00	104.00	4.00	1.51	
ZDDH0033	134.70	137.00	2.30	1.27	
ZDDH0033	143.00	144.00	1.00	1.45	



Hole_ID	From (m)	To (m)	Interval	Au (g/t)	Comments
ZDDH0034	17.00	28.00	11.00	0.79	
ZDDH0034	23.00	24.00	1.00	4.59	including
ZDDH0034	27.00	28.00	1.00	1.77	including
ZDDH0034	62.22	63.34	1.12	2.85	
ZDDH0034	87.00	92.84	5.84	1.12	
ZDDH0034	89.00	91.00	2.00	2.45	
ZDDH0034	105.40	106.00	0.60	1.15	
ZDDH0034	116.00	117.00	1.00	1.17	
ZDDH0034	172.00	173.00	1.00	1.68	
ZDDH0034	180.40	181.50	1.10	6.58	
ZDDH0034	193.00	194.00	1.00	2.73	
ZDDH0034	202.00	203.00	1.00	2.12	
ZDDH0035	67.00	68.00	1.00	2.67	
ZDDH0035	81.10	110.34	29.24	1.05	
ZDDH0035	89.00	94.00	5.00	4.11	including
ZDDH0035	84.00	106.00	22.00	1.34	including
ZDDH0035	144.00	155.00	11.00	1.15	
ZDDH0035	153.00	155.00	2.00	4.41	including
ZDDH0035	162.00	164.00	2.00	1.03	
ZDDH0035	199.00	200.00	1.00	1.76	
ZDDH0035	192.00	238.00	46.00	0.72	
ZDDH0035	224.00	238.00	14.00	1.86	including
ZDDH0035	224.00	233.00	9.00	2.59	including
ZDDH0035	277.00	278.00	1.00	1.63	
ZDDH0036	74.00	125.00	51.00	1.07	
ZDDH0036	74.00	96.00	22.00	2.16	including
ZDDH0036	88.30	96.00	7.70	5.04	including
ZDDH0036	104.00	105.00	1.00	2.33	including
ZDDH0036	114.00	115.00	1.00	2.84	including
ZDDH0036	165.00	166.00	1.00	1.11	
ZDDH0036	215.00	216.00	1.00	1.60	
ZDDH0037	42.00	65.00	23.00	0.40	
ZDDH0037	42.00	42.68	0.68	1.55	including
ZDDH0037	56.00	65.00	9.00	0.70	including
ZDDH0037	56.00	57.00	1.00	2.47	including
ZDDH0037	62.00	64.00	2.00	1.32	including
ZDDH0037	149.00	172.00	23.00	0.82	
ZDDH0037	149.00	154.00	5.00	1.47	including
ZDDH0037	162.00	172.00	10.00	0.92	including
ZDDH0037	162.00	168.00	6.00	1.04	including
ZDDH0038	23.00	24.00	1.00	3.12	
ZDDH0038	74.20	113.00	38.80	0.49	
ZDDH0038	74.20	77.00	2.80	2.06	including
ZDDH0038	92.00	93.00	1.00	4.39	including
ZDDH0038	105.00	106.00	1.00	2.11	including
ZDDH0038	148.00	152.00	4.00	1.17	including
ZDDH0038	178.00	186.00	8.00	0.50	
ZDDH0038	185.00	186.00	1.00	2.48	including
ZDDH0038	200.00	208.10	8.10	1.12	including
ZDDH0038	202.00	204.00	2.00	3.72	including
ZDDH0039	2.50	5.60	3.10	0.39	
ZDDH0039	78.70	81.00	2.30	1.43	
ZDDH0039	188.00	252.50	64.50	0.47	
ZDDH0039	212.00	232.00	20.00	0.84	including
ZDDH0039	212.00	218.00	6.00	1.49	including
ZDDH0039	226.00	227.00	1.00	3.86	including
ZDDH0039	237.00	238.00	1.00	2.30	including
ZDDH0039	268.00	269.00	1.00	1.62	including
ZDDH0040	136.00	197.00	61.00	0.75	
ZDDH0040	136.00	152.00	16.00	1.96	including
ZDDH0040	136.00	146.00	10.00	2.61	including
ZDDH0040	142.00	146.00	4.00	5.34	including
ZDDH0040	160.00	164.00	4.00	0.95	including
ZDDH0040	161.00	162.00	1.00	2.84	including
ZDDH0040	182.00	188.00	6.00	0.72	including
ZDDH0040	195.00	197.00	2.00	2.75	including
ZDDH0040	288.00	291.00	3.00	1.24	including
ZDDH0041	2.00	12.00	10.00	0.55	
ZDDH0041	6.00	8.00	2.00	1.33	including
ZDDH0041	23.50	52.00	28.50	0.38	
ZDDH0041	23.50	32.00	8.50	0.48	including
ZDDH0041	29.00	32.00	3.00	0.99	including

Hole_ID	From (m)	To (m)	Interval	Au (g/t)	Comments
ZDDH0041	40.00	46.00	6.00	0.61	
ZDDH0041	106.20	108.00	1.80	3.49	
ZDDH0041	127.50	128.00	0.50	29.90	
ZDDH0041	140.00	145.00	5.00	5.91	
ZDDH0041	141.65	143.50	1.85	15.22	including
ZDDH0042	112.00	127.00	15.00	0.68	
ZDDH0042	126.00	127.00	1.00	5.64	including
ZDDH0043	5.30	56.00	50.70	0.45	
ZDDH0043	5.30	22.50	17.20	0.94	including
ZDDH0043	9.50	13.00	3.50	3.44	including
ZDDH0043	80.00	105.00	25.00	0.41	
ZDDH0043	81.00	85.00	4.00	0.87	including
ZDDH0043	103.00	105.00	2.00	1.60	including
ZDDH0043	241.00	242.00	1.00	1.02	
ZDDH0044	104.00	107.00	3.00	0.92	
ZDDH0044	104.00	105.00	1.00	2.25	including
ZDDH0045	23.00	50.00	27.00	0.59	
ZDDH0045	36.00	46.20	10.20	1.07	including
ZDDH0045	36.00	40.00	4.00	1.80	including
ZDDH0045	97.00	98.00	1.00	1.91	
ZDDH0045	196.30	203.00	6.70	1.10	
ZDDH0045	197.00	198.50	1.50	3.21	including
ZDDH0045	196.30	199.00	2.70	2.70	including
ZDDH0046	17.60	39.00	21.40	1.17	
ZDDH0046	26.00	31.00	5.00	3.75	including
ZDDH0046	28.00	31.00	3.00	5.71	including
ZDDH0046	180.00	181.00	1.00	1.11	
ZDDH0046	223.00	224.00	1.00	1.45	
ZDDH0046	248.60	250.00	1.40	1.35	
ZDDH0047	30.00	134.50	104.50	0.56	
ZDDH0047	35.00	36.00	1.00	2.98	including
ZDDH0047	74.00	75.00	1.00	2.03	including
ZDDH0047	97.00	134.80	37.80	1.23	including
ZDDH0047	97.00	109.00	12.00	2.68	including
ZDDH0047	97.00	99.00	2.00	11.00	including
ZDDH0047	130.00	134.80	4.80	2.71	including
ZDDH0047	210.00	211.00	1.00	1.78	
ZDDH0047	288.00	289.00	1.00	1.19	
ZDDH0048	45.00	90.00	45.00	0.54	
ZDDH0048	53.50	54.50	1.00	3.15	including
ZDDH0048	47.00	55.00	8.00	1.02	including
ZDDH0048	80.00	83.00	3.00	4.18	including
ZDDH0049	124.00	235.50	111.50	1.25	
ZDDH0049	124.00	182.00	58.00	2.04	including
ZDDH0049	154.00	181.50	27.50	3.57	including
ZDDH0049	124.00	141.00	17.00	1.11	including
ZDDH0049	124.00	125.00	1.00	10.25	including
ZDDH0049	159.00	172.00	13.00	5.32	including
ZDDH0049	159.00	165.00	6.00	4.17	including
ZDDH0049	177.00	182.00	5.00	5.14	including
ZDDH0049	213.00	235.50	22.50	0.89	including
ZDDH0049	215.00	218.00	3.00	1.39	including
ZDDH0049	227.00	235.50	8.50	1.81	including
ZDDH0049	231.00	235.50	4.50	3.07	including
ZDDH0049	245.00	246.00	1.00	1.66	
ZDDH0049	285.00	286.00	1.00	3.81	
ZDDH0049	290.00	291.00	1.00	1.12	
ZDDH0050	6.00	16.00	10.00	1.56	
ZDDH0050	7.00	8.00	1.00	10.65	including
ZDDH0050	92.00	93.00	1.00	2.55	
ZDDH0050	157.00	222.00	65.00	0.84	
ZDDH0050	183.00	185.00	2.00	2.02	including
ZDDH0050	192.00	193.00	1.00	2.35	including
ZDDH0050	202.00	209.00	7.00	5.84	including
ZDDH0050	205.00	207.50	2.50	15.92	including
ZDDH0050	220.00	221.00	1.00	1.27	including

Hole_ID	From (m)	To (m)	Interval	Au (g/t)	Comments
ZDDH0051	249.00	347.00	98.00	0.95	
ZDDH0051	251.00	282.00	31.00	1.55	including
ZDDH0051	251.00	265.00	14.00	2.71	including
ZDDH0051	258.00	264.00	6.00	4.86	including
ZDDH0051	260.00	261.00	1.00	27.60	including
ZDDH0051	264.00	265.00	1.00	9.85	including
ZDDH0051	303.00	320.00	17.00	1.03	including
ZDDH0051	317.00	318.00	1.00	5.99	including
ZDDH0051	317.00	332.50	15.50	1.19	including
ZDDH0051	328.00	347.00	19.00	1.25	including
ZDDH0051	345.00	346.00	1.00	8.25	including
ZDDH0052	10.00	11.00	1.00	1.35	
ZDDH0052	25.00	67.00	42.00	0.44	
ZDDH0052	25.50	26.50	1.00	2.25	including
ZDDH0052	64.00	68.00	4.00	2.37	
ZDDH0052	154.00	157.00	3.00	3.27	
ZDDH0052	177.00	178.00	1.00	1.51	
ZDDH0053	7.70	87.00	79.30	0.72	
ZDDH0053	15.00	16.00	1.00	1.20	including
ZDDH0053	36.00	37.00	1.00	1.12	including
ZDDH0053	64.00	87.00	23.00	2.04	including
ZDDH0053	64.00	71.00	7.00	4.47	including
ZDDH0053	66.00	69.00	3.00	7.89	including
ZDDH0053	64.00	80.50	16.50	2.50	including
ZDDH0053	134.50	136.86	2.36	1.13	
ZDDH0053	146.00	147.00	1.00	1.87	
ZDDH0053	188.00	191.00	3.00	0.58	
ZDDH0053	240.00	241.00	1.00	1.09	
ZDDH0053	274.00	281.00	7.00	0.77	
ZDDH0053	274.00	275.00	1.00	3.65	including
ZDDH0053	280.00	281.00	1.00	1.11	including
ZDDH0054	91.00	110.00	19.00	0.46	
ZDDH0054	104.00	108.00	4.00	1.48	including
ZDDH0054	118.50	119.20	0.70	1.72	
ZDDH0054	252.00	253.00	1.00	1.23	
ZDDH0054	280.00	281.00	1.00	8.75	
ZDDH0054	336.00	337.00	1.00	1.23	
ZDDH0055	20.00	241.20	221.20	0.62	
ZDDH0055	21.00	22.00	1.00	3.19	including
ZDDH0055	48.00	122.00	74.00	1.05	including
ZDDH0055	48.00	88.50	40.50	1.51	including
ZDDH0055	48.00	60.12	12.12	4.83	including
ZDDH0055	77.00	80.00	3.00	16.88	including
ZDDH0055	105.00	109.00	4.00	3.04	including
ZDDH0055	168.00	169.00	1.00	2.00	including
ZDDH0055	200.00	241.20	41.20	1.13	including
ZDDH0055	200.00	233.00	33.00	1.36	including
ZDDH0055	200.00	201.00	1.00	2.83	including
ZDDH0055	207.00	208.00	1.00	6.51	including
ZDDH0055	217.00	231.00	14.00	2.03	including
ZDDH0055	223.00	231.00	8.00	2.64	including
ZDDH0055	282.00	326.00	44.00	0.48	
ZDDH0055	282.00	283.00	1.00	3.91	including
ZDDH0055	302.00	308.00	6.00	1.97	including
ZDDH0055	319.00	320.00	1.00	1.51	including
ZDDH0055	325.00	326.00	1.00	3.77	including
ZDDH0056	232.00	236.70	4.70	0.70	
ZDDH0056	236.00	236.70	0.70	3.09	
ZDDH0057	22.00	44.00	22.00	1.03	
ZDDH0057	22.00	23.00	1.00	10.20	including
ZDDH0057	22.00	30.00	8.00	1.61	including
ZDDH0057	216.00	233.00	17.00	0.55	
ZDDH0057	225.00	228.00	3.00	1.93	including
ZDDH0057	274.00	351.00	77.00	1.13	
ZDDH0057	279.00	321.00	42.00	1.97	including
ZDDH0057	279.00	311.00	32.00	2.32	including
ZDDH0057	283.00	298.00	15.00	3.25	including
ZDDH0057	318.00	321.00	3.00	2.75	including

Hole_ID	From (m)	To (m)	Interval	Au (g/t)	Comments
ZDDH0058	34.00	35.00	1.00	1.29	
ZDDH0058	237.00	250.00	13.00	0.47	
ZDDH0058	237.00	241.00	4.00	0.69	including
ZDDH0058	248.00	250.00	2.00	1.49	including
ZDDH0059	61.00	62.00	1.00	1.02	
ZDDH0059	194.50	282.00	87.50	0.72	
ZDDH0059	196.00	244.50	48.50	1.02	including
ZDDH0059	207.00	241.60	34.60	1.29	including
ZDDH0059	229.00	241.60	12.60	2.21	including
ZDDH0059	196.00	198.00	2.00	1.76	including
ZDDH0059	207.00	212.00	5.00	1.58	including
ZDDH0059	236.00	241.60	5.60	4.37	including
ZDDH0059	276.00	282.00	6.00	1.48	
ZDDH0060	156.00	168.00	12.00	0.44	
ZDDH0060	163.00	166.00	3.00	0.78	including
ZDDH0060	215.00	220.95	5.95	0.37	
ZDDH0061	157.00	158.00	1.00	2.31	
ZDDH0061	194.00	195.00	1.00	0.83	
ZDDH0062	8.00	70.00	62.00	0.46	
ZDDH0062	8.00	31.00	23.00	0.88	including
ZDDH0062	8.00	21.50	13.50	1.12	including
ZDDH0062	13.00	15.50	2.50	2.01	including
ZDDH0062	18.00	21.50	3.50	1.94	including
ZDDH0062	68.00	70.00	2.00	2.40	including
ZDDH0062	110.00	111.00	1.00	1.18	
ZDDH0062	119.00	120.00	1.00	2.36	
ZDDH0062	108.00	201.00	93.00	0.37	
ZDDH0062	129.00	173.00	44.00	0.53	including
ZDDH0062	134.00	141.00	7.00	0.76	including
ZDDH0062	162.20	172.00	9.80	1.30	including
ZDDH0062	225.00	226.00	1.00	1.40	
ZDDH0062	256.00	280.00	24.00	0.66	
ZDDH0062	256.00	261.00	5.00	2.29	including
ZDDH0063	0.00	3.00	3.00	2.26	
ZDDH0063	166.00	332.00	166.00	0.57	
ZDDH0063	169.00	171.00	2.00	1.20	including
ZDDH0063	180.00	210.00	30.00	0.90	including
ZDDH0063	180.00	182.00	2.00	7.52	including
ZDDH0063	197.00	210.00	13.00	0.75	including
ZDDH0063	277.00	316.00	39.00	1.22	including
ZDDH0063	300.00	316.00	16.00	2.96	including
ZDDH0063	311.00	316.00	5.00	9.09	including
ZDDH0064	102.00	103.70	1.70	1.43	
ZDDH0064	188.00	202.00	14.00	0.55	
ZDDH0064	192.00	196.00	4.00	1.33	including
ZDDH0064	243.00	244.00	1.00	1.11	
ZDDH0064	309.00	317.00	8.00	0.78	
ZDDH0064	311.00	314.00	3.00	1.53	
ZDDH0065	25.00	27.00	2.00	1.25	
ZDDH0065	56.40	58.80	2.40	0.78	
ZDDH0065	155.00	167.00	12.00	1.72	
ZDDH0066	306.00	465.00	159.00	0.46	including
ZDDH0066	306.00	443.00	137.00	0.51	including
ZDDH0066	389.00	436.00	47.00	1.00	including
ZDDH0066	308.00	310.00	2.00	1.98	including
ZDDH0066	357.00	362.00	5.00	1.10	including
ZDDH0066	357.50	361.00	3.50	1.43	including
ZDDH0066	389.00	412.00	23.00	1.09	including
ZDDH0066	389.00	401.00	12.00	1.59	including
ZDDH0066	389.00	392.00	3.00	2.97	including
ZDDH0066	424.00	443.00	19.00	1.24	including
ZDDH0066	427.00	436.00	9.00	2.14	including
ZDDH0067	5.00	64.00	59.00	1.72	

Hole_ID	From (m)	To (m)	Interval	Au (g/t)	Comments
ZDDH0067	5.00	37.40	32.40	3.05	including
ZDDH0067	31.00	37.00	6.00	15.18	including
ZDDH0067	81.00	82.00	1.00	1.87	
ZDDH0067	91.00	96.00	5.00	0.53	
ZDDH0067	107.00	121.00	14.00	0.47	
ZDDH0067	108.00	109.00	1.00	1.27	including
ZDDH0067	119.00	121.00	2.00	1.17	including
ZDDH0067	136.00	139.00	3.00	2.13	
ZDDH0068	0.00	7.00	7.00	0.45	
ZDDH0068	56.00	117.70	61.70	0.30	
ZDDH0068	60.00	83.00	23.00	0.46	including
ZDDH0068	60.00	61.00	1.00	2.43	including
ZDDH0068	74.00	75.00	1.00	1.14	including
ZDDH0068	114.90	117.70	2.80	0.84	including
ZDDH0068	143.00	154.00	11.00	0.62	
ZDDH0068	152.00	153.00	1.00	1.59	including
ZDDH0068	185.00	186.00	1.00	1.84	
ZDDH0068	189.00	190.00	1.00	1.37	
ZDDH0068	200.00	201.00	1.00	2.03	
ZDDH0068	209.00	210.00	1.00	4.42	
ZDDH0068	225.00	226.00	1.00	1.53	
ZDDH0068	303.00	303.93	0.93	1.14	
ZDDH0069	147.00	414.00	267.00	1.12	
ZDDH0069	221.00	414.00	193.00	1.47	including
ZDDH0069	224.00	404.00	180.00	1.57	including
ZDDH0069	234.00	366.00	132.00	1.89	including
ZDDH0069	147.00	162.00	15.00	0.68	including
ZDDH0069	147.00	152.00	5.00	1.24	including
ZDDH0069	184.00	184.50	0.50	8.69	including
ZDDH0069	234.00	258.00	24.00	1.72	including
ZDDH0069	244.00	248.00	4.00	4.94	including
ZDDH0069	289.00	345.00	56.00	3.49	including
ZDDH0069	292.00	337.00	45.00	4.02	including
ZDDH0069	289.00	322.00	33.00	5.07	including
ZDDH0069	292.00	320.50	28.50	5.68	including
ZDDH0069	314.00	320.50	6.50	7.28	including
ZDDH0069	292.00	303.00	11.00	7.73	including
ZDDH0069	392.50	401.00	8.50	2.49	including
ZDDH0069	398.00	400.00	2.00	7.89	including
ZDDH0070	1.50	24.00	22.50	0.34	
ZDDH0070	10.95	24.00	13.05	0.50	including
ZDDH0070	18.00	21.50	3.50	0.98	including
ZDDH0070	155.00	156.00	1.00	2.28	
ZDDH0071	25.00	96.00	71.00	0.80	
ZDDH0071	41.00	43.00	2.00	1.96	including
ZDDH0071	62.79	70.00	7.21	1.04	including
ZDDH0071	67.00	70.00	3.00	1.98	including
ZDDH0071	88.00	96.00	8.00	4.18	including
ZDDH0071	89.75	95.00	5.25	5.97	including
ZDDH0071	133.00	149.50	16.50	0.36	
ZDDH0071	139.00	146.50	7.50	0.55	including
ZDDH0071	255.00	255.50	0.50	2.69	
ZDDH0072	356.00	396.00	40.00	0.69	
ZDDH0072	366.20	372.20	6.00	1.89	including
ZDDH0072	366.20	368.00	1.80	5.50	including
ZDDH0072	383.00	384.00	1.00	5.01	including
ZDDH0072	393.00	394.00	1.00	8.39	including
ZDDH0073	21.40	23.00	1.60	0.62	
ZDDH0073	69.00	70.00	1.00	3.33	
ZDDH0073	93.00	95.00	2.00	2.04	
ZDDH0073	179.00	180.00	1.00	2.73	
ZDDH0073	207.00	285.00	78.00	0.41	
ZDDH0073	207.00	209.00	2.00	7.42	including
ZDDH0073	207.00	232.06	25.06	0.74	including
ZDDH0073	279.00	279.50	0.50	13.80	including
ZDDH0074	89.00	116.00	27.00	1.16	
ZDDH0074	89.00	94.00	5.00	2.15	including
ZDDH0074	114.00	116.00	2.00	8.06	including

Hole_ID	From (m)	To (m)	Interval	Au (g/t)	Comments
ZDDH0075	76.00	335.90	259.90	0.70	
ZDDH0075	89.00	309.00	220.00	0.86	including
ZDDH0075	97.00	100.00	3.00	2.63	including
ZDDH0075	124.00	127.00	3.00	2.40	including
ZDDH0075	137.00	140.00	3.00	1.49	including
ZDDH0075	153.50	155.00	1.50	5.99	including
ZDDH0075	178.00	187.00	9.00	1.02	including
ZDDH0075	217.00	220.00	3.00	1.18	including
ZDDH0075	236.00	238.00	2.00	1.56	including
ZDDH0075	249.00	251.00	2.00	1.03	including
ZDDH0075	270.00	309.00	39.00	2.73	including
ZDDH0075	270.00	296.00	26.00	3.54	including
ZDDH0075	270.00	285.50	15.50	5.49	including
ZDDH0075	304.00	309.00	5.00	2.72	including
ZDDH0075	328.00	338.80	10.80	1.44	including
ZDDH0075	336.00	338.80	2.80	4.97	including
ZDDH0076	145.00	146.00	1.00	0.57	
ZDDH0077	65.00	82.00	17.00	0.54	
ZDDH0077	74.00	78.00	4.00	1.13	including
ZDDH0077	69.60	70.60	1.00	1.91	including
ZDDH0077	121.70	122.50	0.80	1.56	
ZDDH0078	214.00	225.00	11.00	0.67	
ZDDH0078	214.33	216.00	1.67	3.46	including
ZDDH0078	263.00	265.00	2.00	1.54	
ZDDH0078	391.00	393.00	2.00	0.92	
ZDDH0079	33.00	34.00	1.00	1.33	
ZDDH0079	70.20	72.10	1.90	1.56	
ZDDH0079	165.60	166.00	0.40	4.26	
ZDDH0079	256.00	257.00	1.00	2.14	
ZDDH0079	272.00	273.00	1.00	1.26	
ZDDH0079	288.00	295.00	7.00	0.91	
ZDDH0079	290.00	294.00	4.00	1.19	including
ZDDH0080	108.00	121.00	13.00	1.17	
ZDDH0080	115.50	120.00	4.50	3.08	including
ZDDH0080	141.00	143.00	2.00	0.98	
ZDDH0080	254.50	255.00	0.50	1.19	
ZDDH0080	285.05	293.00	7.95	0.46	
ZDDH0080	286.00	287.50	1.50	1.01	including
ZDDH0081	82.00	110.00	28.00	1.90	
ZDDH0081	82.00	91.00	9.00	3.76	including
ZDDH0081	82.00	84.00	2.00	10.95	including
ZDDH0081	88.50	91.00	2.50	4.63	including
ZDDH0081	104.00	110.00	6.00	2.91	including
ZDDH0081	104.00	106.00	2.00	7.45	including
ZDDH0081	201.00	202.00	1.00	1.62	
ZDDH0082	151.00	153.00	2.00	3.30	
ZDDH0082	273.00	303.00	30.00	0.33	
ZDDH0082	294.00	295.00	1.00	2.88	
ZDDH0082	301.00	303.00	2.00	2.43	
ZDDH0083	180.00	190.10	10.10	0.92	
ZDDH0083	180.00	184.00	4.00	1.85	including
ZDDH0083	264.00	288.00	24.00	1.63	
ZDDH0083	273.00	288.00	15.00	2.55	including
ZDDH0083	273.00	280.00	7.00	4.48	including
ZDDH0083	276.00	280.00	4.00	7.25	including
ZDDH0083	336.00	339.00	3.00	1.21	
ZDDH0083	362.00	363.00	1.00	3.57	
ZDDH0083	395.00	409.00	14.00	1.11	
ZDDH0083	401.00	407.00	6.00	2.12	including
ZDDH0084	118.30	203.97	85.67	1.42	
ZDDH0084	124.00	144.70	20.70	3.81	including
ZDDH0084	125.00	136.00	11.00	5.49	including
ZDDH0084	162.00	169.50	7.50	3.85	including

Hole_ID	From (m)	To (m)	Interval	Au (g/t)	Comments
ZDDH0085	22.00	24.00	2.00	1.94	
ZDDH0085	85.00	153.00	68.00	0.47	
ZDDH0085	85.00	87.00	2.00	2.34	including
ZDDH0085	141.65	153.00	11.35	2.19	
ZDDH0085	147.00	151.00	4.00	5.38	
ZDDH0085	185.00	186.00	1.00	1.62	
ZDDH0085	219.00	318.00	99.00	0.49	
ZDDH0085	219.00	224.00	5.00	2.40	including
ZDDH0085	250.00	256.00	6.00	2.25	including
ZDDH0085	265.60	269.00	3.40	1.42	including
ZDDH0085	290.00	292.00	2.00	1.69	including
ZDDH0085	307.00	309.00	2.00	1.46	including
ZDDH0085	312.00	313.00	1.00	1.48	including
ZDDH0086	15.00	16.00	1.00	0.58	
ZDDH0086	36.00	38.00	2.00	0.30	
ZDDH0086	128.00	129.00	1.00	0.90	
ZDDH0086	135.00	137.00	2.00	0.51	
ZDDH0087	86.00	190.00	104.00	0.76	
ZDDH0087	86.00	131.00	45.00	1.57	including
ZDDH0087	86.00	116.00	30.00	2.24	including
ZDDH0087	90.00	107.00	17.00	3.62	including
ZDDH0087	187.00	189.00	2.00	1.12	
ZDDH0088	9.00	10.00	1.00	0.48	
ZDDH0088	22.50	23.50	1.00	0.49	
ZDDH0088	39.80	40.50	0.70	0.97	
ZDDH0088	90.00	92.00	2.00	0.57	
ZDDH0088	133.50	134.00	0.50	0.91	
ZDDH0088	180.00	181.00	1.00	69.70	
ZDDH0089	28.45	37.00	8.55	0.37	
ZDDH0089	29.00	33.00	4.00	0.49	
ZDDH0090	23.00	24.00	1.00	0.89	
ZDDH0090	43.00	83.00	40.00	0.53	
ZDDH0090	60.00	78.00	18.00	1.05	including
ZDDH0090	60.00	69.00	9.00	1.35	including
ZDDH0090	148.00	182.00	34.00	0.44	
ZDDH0090	148.00	149.00	1.00	1.86	including
ZDDH0090	157.00	159.00	2.00	5.42	including
ZDDH0090	223.00	224.00	1.00	3.99	
ZDDH0091	36.00	40.00	4.00	8.04	
ZDDH0091	36.00	38.00	2.00	14.44	including
ZDDH0091	73.00	85.50	12.50	0.33	
ZDDH0091	83.00	84.50	1.50	1.42	including
ZDDH0091	125.00	131.00	6.00	0.34	
ZDDH0091	172.00	173.00	1.00	0.47	
ZDDH0092	45.00	46.00	1.00	2.24	
ZDDH0092	86.00	87.00	1.00	10.88	
ZDDH0092	121.00	123.94	2.94	1.11	
ZDDH0092	282.00	382.00	100.00	0.48	
ZDDH0092	282.00	292.00	10.00	1.43	including
ZDDH0092	305.00	326.00	21.00	0.58	including
ZDDH0092	311.00	319.00	8.00	1.08	including
ZDDH0092	331.00	332.00	1.00	1.12	including
ZDDH0092	369.00	371.00	2.00	2.31	including
ZDDH0092	378.00	379.00	1.00	1.25	including
ZDDH0093	25.60	27.05	1.45	15.94	
ZDDH0093	116.00	117.00	1.00	1.85	
ZDDH0093	132.00	150.00	18.00	0.51	
ZDDH0093	136.00	142.00	6.00	1.16	including
ZDDH0093	165.00	175.00	10.00	0.74	
ZDDH0093	170.00	173.00	3.00	1.86	including
ZDDH0093	190.47	194.18	3.71	0.79	
ZDDH0093	268.00	270.00	2.00	1.10	
ZDDH0093	279.00	304.00	25.00	0.77	
ZDDH0093	279.00	281.00	2.00	1.40	including
ZDDH0093	290.00	304.00	14.00	1.08	including
ZDDH0093	298.00	304.00	6.00	2.24	including

Hole_ID	From (m)	To (m)	Interval	Au (g/t)	Comments
ZDDH0094	37.00	40.00	3.00	2.41	
ZDDH0094	83.49	105.00	21.51	0.71	
ZDDH0094	86.30	91.00	4.70	1.02	
ZDDH0094	100.00	105.00	5.00	1.64	
ZDDH0094	298.00	346.00	48.00	0.67	
ZDDH0094	298.00	299.00	1.00	1.54	including
ZDDH0094	319.00	323.00	4.00	6.45	including
ZDDH0094	343.00	344.00	1.00	1.03	including
ZDDH0094	375.00	375.50	0.50	1.51	
ZDDH0095	106.00	108.00	2.00	0.62	
ZDDH0095	135.95	136.50	0.55	1.52	
ZDDH0095	212.50	224.00	11.50	1.13	
ZDDH0095	212.50	214.07	1.57	7.37	including
ZDDH0096	29.00	47.00	18.00	0.46	
ZDDH0096	39.00	46.00	7.00	0.79	including
ZDDH0096	112.00	113.50	1.50	0.98	
ZDDH0096	155.00	157.50	2.50	0.83	
ZDDH0096	185.00	187.00	2.00	1.59	
ZDDH0096	190.00	191.00	1.00	1.41	
ZDDH0096	261.00	267.00	6.00	0.64	
ZDDH0096	261.00	262.00	1.00	2.21	including
ZDDH0097	9.00	10.00	1.00	2.95	
ZDDH0097	89.00	90.00	1.00	2.15	
ZDDH0098	1.20	3.00	1.80	1.25	
ZDDH0098	74.00	124.00	50.00	1.73	
ZDDH0098	74.00	76.00	2.00	13.95	including
ZDDH0098	97.00	103.00	6.00	8.47	including
ZDDH0098	166.00	203.00	37.00	0.62	
ZDDH0098	168.15	172.82	4.67	1.88	including
ZDDH0098	190.00	203.00	13.00	0.98	including
ZDDH0098	199.00	203.00	4.00	2.40	including
ZDDH0099	10.00	11.00	1.00	3.57	
ZDDH0099	90.80	157.00	66.20	0.53	
ZDDH0099	96.00	111.00	15.00	1.36	
ZDDH0099	138.00	139.00	1.00	1.13	
ZDDH0099	148.00	148.80	0.80	3.43	
ZDDH0099	178.00	178.90	0.90	6.53	
ZDDH0099	251.00	252.00	1.00	1.11	
ZDDH0099	319.40	328.00	8.60	0.58	
ZDDH0099	319.40	322.00	2.60	1.32	
ZDDH0099	342.00	343.00	1.00	1.13	
ZDDH0100	8.00	9.00	1.00	1.08	
ZDDH0100	21.00	56.00	35.00	1.07	
ZDDH0100	29.10	54.50	25.40	1.39	including
ZDDH0100	29.10	31.00	1.90	10.30	including
ZDDH0100	105.00	106.00	1.00	5.86	
ZDDH0100	144.50	157.00	12.50	0.75	
ZDDH0100	147.00	148.00	1.00	4.99	including
ZDDH0100	155.00	157.00	2.00	1.51	including
ZDDH0100	193.00	194.00	1.00	1.45	
ZDDH0101	80.00	81.87	1.87	0.82	
ZDDH0101	133.00	202.00	69.00	0.95	
ZDDH0101	133.00	180.00	47.00	1.21	including
ZDDH0101	136.00	159.40	23.40	1.76	including
ZDDH0101	196.00	197.00	1.00	4.14	including
ZDDH0101	258.00	286.56	28.56	1.30	
ZDDH0101	275.50	285.00	9.50	3.05	including
ZDDH0101	280.00	284.00	4.00	5.94	including
ZDDH0102	187.50	202.00	14.50	0.28	
ZDDH0102	189.00	190.00	1.00	1.46	including
ZDDH0103	4.50	9.00	4.50	0.35	
ZDDH0103	31.20	31.60	0.40	3.48	
ZDDH0103	88.00	102.00	14.00	1.42	
ZDDH0103	88.00	93.60	5.60	3.01	including



Hole_ID	From (m)	To (m)	Interval	Au (g/t)	Comments
ZDDH0103	133.00	133.76	0.76	1.50	
ZDDH0103	140.00	141.00	1.00	4.26	
ZDDH0103	168.00	180.00	12.00	0.40	
ZDDH0103	178.70	180.00	1.30	1.76	including
ZDDH0103	226.00	228.00	2.00	0.56	
ZDDH0104	174.91	216.00	41.09	0.95	
ZDDH0104	174.91	197.00	22.09	1.50	including
ZDDH0104	183.00	197.00	14.00	1.87	including
ZDDH0105	284.00	285.00	1.00	0.69	
ZDDH0105	375.00	376.00	1.00	7.55	
ZDDH0105	414.00	415.00	1.00	1.12	
ZDDH0107	14.10	16.28	2.18	1.15	
ZDDH0107	35.70	48.00	12.30	0.70	
ZDDH0107	37.00	39.00	2.00	2.31	including
ZDDH0107	46.00	48.00	2.00	1.08	
ZDDH0107	359.00	382.00	23.00	0.57	
ZDDH0107	372.00	381.00	9.00	1.16	including
ZDDH0107	353.00	354.00	1.00	1.28	
ZDDH0108	25.00	26.00	1.00	0.52	
ZDDH0108	53.70	142.00	88.30	0.30	
ZDDH0108	60.00	61.00	1.00	3.95	
ZDDH0108	72.41	76.00	3.59	1.22	
ZDDH0108	90.00	93.00	3.00	2.17	
ZDDH0108	114.00	114.40	0.40	1.24	
ZDDH0110	80.00	100.00	20.00	1.48	
ZDDH0110	80.00	92.00	12.00	1.99	including
ZDDH0110	82.50	88.00	5.50	3.37	including
ZDDH0110	114.00	120.00	6.00	0.53	
ZDDH0110	117.00	118.00	1.00	1.39	including
ZDDH0110	186.00	187.00	1.00	1.10	
ZDDH0110	194.00	195.00	1.00	1.33	
ZDDH0111	8.00	130.00	122.00	0.43	
ZDDH0111	8.00	10.00	2.00	0.71	including
ZDDH0111	19.00	27.00	8.00	0.65	including
ZDDH0111	21.00	22.00	1.00	2.30	including
ZDDH0111	27.00	28.00	1.00	1.57	including
ZDDH0111	43.00	54.00	11.00	0.34	including
ZDDH0111	85.00	86.00	1.00	3.01	including
ZDDH0111	98.00	109.00	11.00	2.16	including
ZDDH0111	120.00	125.00	5.00	1.35	including
ZDDH0112	130.00	132.00	2.00	0.47	
ZDDH0112	154.00	155.00	1.00	11.90	
ZDDH0112	240.00	241.00	1.00	1.08	
ZDDH0114	26.50	27.20	0.70	0.40	
ZDDH0114	47.20	53.00	5.80	0.47	
ZDDH0114	49.00	51.00	2.00	0.85	
ZDDH0114	69.00	71.00	2.00	0.44	
ZDDH0114	97.00	106.90	9.90	0.57	
ZDDH0114	103.00	105.00	2.00	1.74	including
ZDDH0114	164.00	165.00	1.00	1.00	
ZDDH0114	223.00	229.00	6.00	2.29	
ZDDH0114	224.00	227.00	3.00	4.36	including
ZDDH0115	235.00	236.00	1.00	0.43	
ZDDH0115	311.00	318.00	7.00	1.00	
ZDDH0115	312.00	313.00	1.00	3.33	
ZDDH0116	59.00	60.00	1.00	5.76	
ZDDH0116	65.88	67.27	1.39	0.49	
ZDDH0117	162.00	163.00	1.00	1.20	
ZDDH0117	190.80	201.00	10.20	0.65	
ZDDH0117	190.80	191.50	0.70	5.03	including
ZDDH0117	198.00	201.00	3.00	1.00	including
ZDDH0117	225.00	227.00	2.00	0.46	
ZDDH0117	261.00	285.00	24.00	0.58	
ZDDH0117	268.00	281.00	13.00	0.88	including

Hole_ID	From (m)	To (m)	Interval	Au (g/t)	Comments
ZDDH0117	268.00	270.00	2.00	1.50	including
ZDDH0117	280.00	281.00	1.00	4.12	including
ZDDH0118					No Significant
ZDDH0119	4.60	6.60	2.00	0.52	
ZDDH0119	20.00	26.00	6.00	0.50	
ZDDH0119	20.00	21.00	1.00	1.69	
ZDDH0119	261.00	262.00	1.00	1.18	
ZDDH0119	269.00	270.00	1.00	1.48	
ZDDH0119	326.00	374.00	48.00	0.53	
ZDDH0119	350.00	374.00	24.00	1.02	including
ZDDH0119	355.00	374.00	19.00	1.22	including
ZDDH0119	355.00	359.50	4.50	2.97	including
ZDDH0119	365.00	366.00	1.00	2.64	including
ZDDH0119	373.00	374.00	1.00	4.22	including
ZDDH0120	229.00	232.00	3.00	1.47	
ZDDH0120	317.00	318.00	1.00	15.30	
ZDDH0120	351.00	352.00	1.00	1.16	
ZDDH0120	371.00	378.00	7.00	0.61	
ZDDH0120	376.00	377.00	1.00	1.39	including
ZDDH0120	383.00	384.00	1.00	1.03	
ZDDH0120	387.00	388.00	1.00	1.27	
ZDDH0120	396.00	397.00	1.00	1.02	
ZDDH0120	412.00	415.00	3.00	0.41	
ZDDH0121	35.00	41.00	6.00	0.47	
ZDDH0121	35.00	36.00	1.00	1.07	including
ZDDH0121	60.00	91.50	31.50	0.34	
ZDDH0121	66.00	73.50	7.50	0.59	including
ZDDH0121	66.00	67.00	1.00	1.11	including
ZDDH0121	72.50	73.20	0.70	3.27	including
ZDDH0121	79.00	80.00	1.00	1.40	including
ZDDH0121	86.50	88.00	1.50	2.31	including
ZDDH0121	230.00	231.00	1.00	2.94	including
ZDDH0122	3.00	7.10	4.10	0.38	
ZDDH0122	36.50	37.39	0.89	0.87	
ZDDH0122	43.00	44.00	1.00	0.87	
ZDDH0122	85.00	85.65	0.65	1.11	
ZDDH0122	155.00	156.00	1.00	0.84	
ZDDH0123	70.00	98.00	28.00	0.87	
ZDDH0123	76.00	77.00	1.00	1.93	including
ZDDH0123	84.07	87.00	2.93	5.38	including
ZDDH0123	200.00	204.00	4.00	0.85	
ZDDH0123	203.00	204.00	1.00	1.48	including
ZDDH0123	215.00	221.00	6.00	1.51	
ZDDH0123	242.60	243.20	0.60	1.16	
ZDDH0123	360.00	361.00	1.00	3.55	
ZDDH0123	383.00	384.00	1.00	0.78	
ZDDH0124	23.40	23.90	0.50	2.02	
ZDDH0124	99.00	100.95	1.95	0.88	
ZDDH0124	99.00	100.00	1.00	1.50	including
ZDDH0124	152.00	223.00	71.00	1.63	
ZDDH0124	152.00	191.00	39.00	2.59	including
ZDDH0124	152.00	171.00	19.00	5.07	including
ZDDH0124	152.00	159.00	7.00	11.98	including
ZDDH0124	221.00	223.00	2.00	6.43	including
ZDDH0124	256.00	257.00	1.00	1.17	
ZDDH0125	263.90	264.35	0.45	1.07	
ZDDH0125	316.50	369.00	52.50	1.37	
ZDDH0125	338.00	359.00	21.00	2.72	including
ZDDH0125	344.00	355.00	11.00	4.14	including
ZDDH0125	317.00	318.50	1.50	1.67	including
ZDDH0125	323.50	324.10	0.60	1.39	including
ZDDH0125	327.00	329.00	2.00	1.07	including
ZDDH0125	344.00	347.00	3.00	5.69	including
ZDDH0125	349.00	355.00	6.00	4.39	including



Hole_ID	From (m)	To (m)	Interval	Au (g/t)	Comments
ZDDH0126	9.00	38.00	29.00	0.30	
ZDDH0126	19.00	20.10	1.10	1.22	including
ZDDH0126	35.77	37.00	1.23	3.58	including
ZDDH0126	93.00	128.00	35.00	0.40	
ZDDH0126	97.00	103.00	6.00	1.63	including
ZDDH0126	144.00	145.00	1.00	2.95	
ZDDH0126	251.00	262.00	11.00	0.83	
ZDDH0126	251.00	257.00	6.00	1.38	including
ZDDH0126	278.90	282.00	3.10	0.51	
ZDDH0126	300.00	301.00	1.00	2.63	
ZDDH0126	325.00	388.00	63.00	0.39	
ZDDH0126	337.00	338.00	1.00	1.02	including
ZDDH0126	350.00	353.90	3.90	1.09	including
ZDDH0126	370.00	371.00	1.00	1.13	including
ZDDH0126	377.63	388.00	10.37	1.04	including
ZDDH0126	385.00	388.00	3.00	2.76	including
ZDDH0126	410.00	411.00	1.00	0.95	
ZDDH0126	415.00	416.00	1.00	1.24	
ZDDH0126	463.00	469.00	6.00	0.78	
ZDDH0126	464.00	466.00	2.00	1.24	
ZDDH0126	468.00	469.00	1.00	1.94	
ZDDH0127	20.00	49.00	29.00	0.57	
ZDDH0127	23.00	24.00	1.00	2.96	including
ZDDH0127	45.00	46.50	1.50	3.77	including
ZDDH0127	97.40	102.00	4.60	0.47	
ZDDH0127	113.00	123.00	10.00	0.63	
ZDDH0127	116.20	117.00	0.80	1.55	including
ZDDH0127	137.00	138.17	1.17	14.39	
ZDDH0127	205.35	206.20	0.85	2.06	
ZDDH0127	248.00	249.00	1.00	1.18	
ZDDH0127	305.00	307.00	2.00	0.75	
ZDDH0128	78.29	79.20	0.91	7.59	
ZDDH0128	103.00	110.00	7.00	3.22	
ZDDH0128	106.00	108.90	2.90	6.95	including
ZDDH0128	249.00	250.00	1.00	3.04	
ZDDH0128	289.00	290.00	1.00	1.08	
ZDDH0128	316.00	317.00	1.00	1.77	
ZDDH0128	368.00	371.00	3.00	3.87	
ZDDH0129	272.00	276.20	4.20	0.41	
ZDDH0129	324.00	350.00	26.00	0.49	
ZDDH0129	324.00	325.00	1.00	1.57	including
ZDDH0129	330.00	331.00	1.00	0.91	including
ZDDH0129	331.50	332.00	0.50	2.21	including
ZDDH0129	341.00	342.00	1.00	1.53	including
ZDDH0129	347.00	348.00	1.00	5.13	including
ZDDH0130	20.00	29.00	9.00	0.57	
ZDDH0130	20.00	21.00	1.00	1.91	
ZDDH0130	28.00	29.00	1.00	2.04	
ZDDH0130	230.00	231.00	1.00	3.24	
ZDDH0131	93.00	95.00	2.00	0.60	
ZDDH0131	119.00	144.00	25.00	2.11	
ZDDH0131	120.00	120.59	0.59	63.10	including
ZDDH0131	136.00	140.00	4.00	2.46	including
ZDDH0131	176.00	177.00	1.00	38.30	
ZDDH0131	180.00	181.00	1.00	0.84	
ZDDH0131	190.00	191.00	1.00	0.55	
ZDDH0131	197.00	198.00	1.00	0.51	
ZDDH0131	228.00	237.00	9.00	0.47	
ZDDH0131	234.00	235.00	1.00	1.94	including
ZDDH0131	290.00	291.00	1.00	1.02	
ZDDH0131	298.00	299.00	1.00	0.72	
ZDDH0131	326.00	327.00	1.00	0.94	
ZDDH0131	343.00	344.00	1.00	0.89	
ZDDH0131	457.00	458.00	1.00	1.00	

Hole_ID	From (m)	To (m)	Interval	Au (g/t)	Comments
ZDDH0132	148.00	149.00	1.00	1.20	
ZDDH0133	47.00	48.00	1.00	0.92	
ZDDH0133	112.00	117.00	5.00	0.41	
ZDDH0133	115.00	116.00	1.00	1.22	including
ZDDH0133	138.00	139.00	1.00	1.21	
ZDDH0133	154.00	155.00	1.00	1.39	
ZDDH0133	229.00	230.00	1.00	4.42	
ZDDH0133	249.00	318.00	69.00	0.54	
ZDDH0133	267.00	294.00	27.00	1.18	including
ZDDH0133	267.00	275.00	8.00	3.17	including
ZDDH0133	292.00	293.00	1.00	2.31	including
ZDDH0133	333.00	334.00	1.00	1.44	
ZDDH0133	339.00	340.00	1.00	0.97	
ZDDH0133	355.00	356.00	1.00	1.19	
ZDDH0133	404.00	405.00	1.00	1.72	
ZDDH0133	438.00	439.00	1.00	0.96	
ZDDH0135	203.00	205.00	2.00	0.52	
ZDDH0135	299.00	300.00	1.00	1.21	
ZDDH0135	334.00	346.00	12.00	3.34	
ZDDH0135	334.00	335.50	1.50	25.22	including
ZDDH0135	345.00	346.00	1.00	1.29	including
ZDDH0136	56.00	57.00	1.00	1.05	
ZDDH0136	221.00	222.00	1.00	0.57	
ZDDH0136	239.00	346.00	107.00	0.49	
ZDDH0136	252.00	253.00	1.00	1.10	including
ZDDH0136	287.00	324.00	37.00	1.01	including
ZDDH0136	309.00	315.00	6.00	1.45	including
ZDDH0136	387.50	388.05	0.55	3.11	
ZDDH0136	415.00	416.00	1.00	2.89	
ZDDH0136	445.00	447.00	2.00	3.53	
ZDDH0149	97.50	118.78	21.28	0.34	
ZDDH0149	105.00	109.50	4.50	1.14	including
ZDDH0149	108.00	109.50	1.50	2.16	including
ZDDH0149	243.00	279.00	36.00	0.40	
ZDDH0149	248.00	259.00	11.00	0.81	including
ZDDH0149	249.00	253.00	4.00	1.69	including
ZDDH0149	249.00	251.00	2.00	2.38	including
ZDDH0149	272.95	275.50	2.55	0.96	
ZDDH0149	272.95	274.00	1.05	1.77	including

\*For full results for holes ZDDH00001 to ZDDH00016, refer to Plukka Ltd Prospectus 30 October 2019. For results of ZDDH00017 to ZDDH00127 refer to TSO:ASX announcements 6 March, 12 March, 27 April, 6 May, 27 May 2020, 10 June 2020, 26 August 2020, 4 September 2020, 9 October 2020, 23 October 2020, 4 November 2020, 24 November 2020, 16 December 2020, 22 December 2020, 11 January 2021, 27 January 2021, 19 February 2021, 5 March 2021, 23 March 2021, 29 March 2021, 29 April 2021, 25 May 2021, 11 June 2021 and 25 June 2021.

## Appendix 2 – Concession Schedule

### El Zorro Gold Project Exploration Concessions (85%\* Tesoro)

Total	Concession Name	Date of Expiration	Size (ha)	Concession type
1	SIERRA PATACONES 1	application	300	Exploration
2	SIERRA PATACONES 2	application	300	Exploration
3	SIERRA PATACONES 3	application	300	Exploration
4	SIERRA PATACONES 4	application	300	Exploration
5	SIERRA PATACONES 5	application	300	Exploration
6	SIERRA PATACONES 6	application	300	Exploration
7	SIERRA PATACONES 7	application	300	Exploration
8	SIERRA PATACONES 8	application	300	Exploration
9	SIERRA PATACONES 9	application	300	Exploration
10	SIERRA PATACONES 10	application	300	Exploration
11	SIERRA PATACONES 11	application	300	Exploration
12	SIERRA PATACONES 12	application	300	Exploration
13	SIERRA PATACONES 13	application	300	Exploration
14	SIERRA PATACONES 14	application	300	Exploration
15	SIERRA PATACONES 15	application	300	Exploration
16	SIERRA PATACONES 20	application	300	Exploration
17	SIERRA PATACONES 19	application	300	Exploration
18	SIERRA PATACONES 18	application	300	Exploration
19	SIERRA PATACONES 17	application	300	Exploration
20	SIERRA PATACONES 16	application	300	Exploration
21	SIERRA PATACONES 21	application	300	Exploration
22	SIERRA PATACONES 22	application	300	Exploration
23	SIERRA PATACONES 23	application	300	Exploration
24	SIERRA PATACONES 24	application	300	Exploration
25	SIERRA PATACONES 25	application	300	Exploration
26	SIERRA PATACONES 26	application	300	Exploration
27	SIERRA PATACONES 27	application	300	Exploration
28	SIERRA PATACONES 28	application	300	Exploration
29	SIERRA PATACONES 29	application	300	Exploration
30	SIERRA PATACONES 30	application	300	Exploration
31	SIERRA PATACONES 31	application	300	Exploration
32	SIERRA PATACONES 32	application	300	Exploration
33	SIERRA PATACONES 33	application	300	Exploration
34	SIERRA PATACONES 34	application	300	Exploration
35	SIERRA PATACONES 35	application	300	Exploration
36	SIERRA PATACONES 42	application	300	Exploration
37	SIERRA PATACONES 41	application	300	Exploration
38	SIERRA PATACONES 40	application	300	Exploration
39	SIERRA PATACONES 39	application	300	Exploration
40	SIERRA PATACONES 38	application	300	Exploration
41	SIERRA PATACONES 37	application	300	Exploration
42	SIERRA PATACONES 36	application	300	Exploration
43	SIERRA PATACONES 43	application	300	Exploration
44	SIERRA PATACONES 44	application	300	Exploration
45	SIERRA PATACONES 45	application	300	Exploration
46	SIERRA PATACONES 46	application	300	Exploration
47	SIERRA PATACONES 47	application	300	Exploration
48	SIERRA PATACONES 48	application	300	Exploration
49	SIERRA PATACONES 49	application	300	Exploration
50	SIERRA PATACONES 50	application	300	Exploration
51	SIERRA PATACONES 51	application	300	Exploration
52	SIERRA PATACONES 53	application	300	Exploration
53	SIERRA PATACONES 54	application	300	Exploration
54	SIERRA PATACONES 55	application	300	Exploration
55	SIERRA PATACONES 56	application	300	Exploration
56	SIERRA PATACONES 57	application	300	Exploration
57	SIERRA PATACONES 62	application	300	Exploration

58	SIERRA PATACONES 61	<b>application</b>	300	Exploration
59	SIERRA PATACONES 60	<b>application</b>	300	Exploration
60	SIERRA PATACONES 59	<b>application</b>	300	Exploration
61	SIERRA PATACONES 58	<b>application</b>	300	Exploration
62	SIERRA PATACONES 63	<b>application</b>	300	Exploration
63	SIERRA PATACONES 64	<b>application</b>	300	Exploration
64	SIERRA PATACONES 65	<b>application</b>	300	Exploration
65	SIERRA PATACONES 66	<b>application</b>	300	Exploration
66	SIERRA PATACONES 67	<b>application</b>	300	Exploration
67	SIERRA PATACONES 68	<b>application</b>	300	Exploration
68	SIERRA PATACONES 69	<b>application</b>	300	Exploration
69	SIERRA PATACONES 70	<b>application</b>	300	Exploration
70	SIERRA PATACONES 71	<b>application</b>	300	Exploration
71	SIERRA PATACONES 72	<b>application</b>	300	Exploration
72	SIERRA PATACONES 73	<b>application</b>	300	Exploration
73	SIERRA PATACONES 74	<b>application</b>	300	Exploration
74	SIERRA PATACONES 75	<b>application</b>	300	Exploration
75	SIERRA PATACONES 76	<b>application</b>	300	Exploration
76	SIERRA PATACONES 77	<b>application</b>	300	Exploration
77	SIERRA PATACONES 84	<b>application</b>	300	Exploration
78	SIERRA PATACONES 83	<b>application</b>	300	Exploration
79	SIERRA PATACONES 82	<b>application</b>	300	Exploration
80	SIERRA PATACONES 81	<b>application</b>	300	Exploration
81	SIERRA PATACONES 80	<b>application</b>	300	Exploration
82	SIERRA PATACONES 79	<b>application</b>	300	Exploration
83	SIERRA PATACONES 78	<b>application</b>	300	Exploration
84	SIERRA PATACONES 52	<b>application</b>	300	Exploration
85	GOLD STORE 72	<b>application</b>	300	Exploration
86	GOLD STORE 71	<b>application</b>	300	Exploration
87	GOLD STORE 70	<b>application</b>	300	Exploration
88	GOLD STORE 69	<b>application</b>	300	Exploration
89	GOLD STORE 68	<b>application</b>	300	Exploration
90	GOLD STORE 67	<b>application</b>	300	Exploration
91	GOLD STORE 66	<b>application</b>	300	Exploration
92	GOLD STORE 1	<b>application</b>	300	Exploration
93	GOLD STORE 2	<b>application</b>	300	Exploration
94	GOLD STORE 3	<b>application</b>	300	Exploration
95	GOLD STORE 4	<b>application</b>	300	Exploration
96	GOLD STORE 5	<b>application</b>	300	Exploration
97	GOLD STORE 6	<b>application</b>	300	Exploration
98	GOLD STORE 7	<b>application</b>	300	Exploration
99	GOLD STORE 8	<b>application</b>	300	Exploration
100	GOLD STORE 9	<b>application</b>	300	Exploration
101	GOLD STORE 10	<b>application</b>	300	Exploration
102	GOLD STORE 11	<b>application</b>	300	Exploration
103	GOLD STORE 12	<b>application</b>	300	Exploration
104	GOLD STORE 13	<b>application</b>	300	Exploration
105	GOLD STORE 14	<b>application</b>	300	Exploration
106	GOLD STORE 15	<b>application</b>	300	Exploration
107	GOLD STORE 16	<b>application</b>	300	Exploration
108	GOLD STORE 17	<b>application</b>	300	Exploration
109	GOLD STORE 18	<b>application</b>	300	Exploration
110	GOLD STORE 19	<b>application</b>	300	Exploration
111	GOLD STORE 20	<b>application</b>	300	Exploration
112	GOLD STORE 21	<b>application</b>	300	Exploration
113	GOLD STORE 22	<b>application</b>	300	Exploration
114	GOLD STORE 23	<b>application</b>	300	Exploration
115	GOLD STORE 24	<b>application</b>	300	Exploration
116	GOLD STORE 25	<b>application</b>	300	Exploration
117	GOLD STORE 26	<b>application</b>	300	Exploration
118	GOLD STORE 27	<b>application</b>	300	Exploration

119	GOLD STORE 28	<b>application</b>	300	Exploration
120	GOLD STORE 29	<b>application</b>	300	Exploration
121	GOLD STORE 30	<b>application</b>	300	Exploration
122	GOLD STORE 36	<b>application</b>	300	Exploration
123	GOLD STORE 35	<b>application</b>	300	Exploration
124	GOLD STORE 34	<b>application</b>	300	Exploration
125	GOLD STORE 33	<b>application</b>	300	Exploration
126	GOLD STORE 32	<b>application</b>	300	Exploration
127	GOLD STORE 31	<b>application</b>	300	Exploration
128	GOLD STORE 37	<b>application</b>	300	Exploration
129	GOLD STORE 38	<b>application</b>	300	Exploration
130	GOLD STORE 39	<b>application</b>	300	Exploration
131	GOLD STORE 40	<b>application</b>	300	Exploration
132	GOLD STORE 41	<b>application</b>	300	Exploration
133	GOLD STORE 42	<b>application</b>	300	Exploration
134	GOLD STORE 43	<b>application</b>	300	Exploration
135	GOLD STORE 44	<b>application</b>	300	Exploration
136	GOLD STORE 45	<b>application</b>	300	Exploration
137	GOLD STORE 46	<b>application</b>	300	Exploration
138	GOLD STORE 47	<b>application</b>	300	Exploration
139	GOLD STORE 48	<b>application</b>	300	Exploration
140	GOLD STORE 49	<b>application</b>	300	Exploration
141	GOLD STORE 50	<b>application</b>	300	Exploration
142	GOLD STORE 51	<b>application</b>	300	Exploration
143	GOLD STORE 52	<b>application</b>	300	Exploration
144	GOLD STORE 53	<b>application</b>	300	Exploration
145	GOLD STORE 54	<b>application</b>	300	Exploration
146	GOLD STORE 55	<b>application</b>	300	Exploration
147	GOLD STORE 56	<b>application</b>	200	Exploration
148	GOLD STORE 57	<b>application</b>	300	Exploration
149	GOLD STORE 58	<b>application</b>	300	Exploration
150	GOLD STORE 59	<b>application</b>	300	Exploration
151	GOLD STORE 60	<b>application</b>	300	Exploration
152	GOLD STORE 61	<b>application</b>	300	Exploration
153	GOLD STORE 62	<b>application</b>	300	Exploration
154	GOLD STORE 63	<b>application</b>	300	Exploration
155	GOLD STORE 64	<b>application</b>	300	Exploration
156	GOLD STORE 65	<b>application</b>	300	Exploration
157	VACAS FLACAS 1	<b>application</b>	300	Exploration
158	VACAS FLACAS 2	<b>application</b>	300	Exploration
159	VACAS FLACAS 5	<b>application</b>	300	Exploration
160	VACAS FLACAS 6	<b>application</b>	300	Exploration
161	VACAS FLACAS 7	<b>application</b>	300	Exploration
162	VACAS FLACAS 8	<b>application</b>	300	Exploration
163	VACAS FLACAS 9	<b>application</b>	300	Exploration
164	VACAS FLACAS 10	<b>application</b>	300	Exploration
165	VACAS FLACAS 11	<b>application</b>	300	Exploration
166	VACAS FLACAS 12	<b>application</b>	300	Exploration
167	VACAS FLACAS 13	<b>application</b>	300	Exploration
168	VACAS FLACAS 14	<b>application</b>	300	Exploration
169	VACAS FLACAS 15	<b>application</b>	300	Exploration
170	VACAS FLACAS 16	<b>application</b>	300	Exploration
171	VACAS FLACAS 17	<b>application</b>	300	Exploration
172	VACAS FLACAS 18	<b>application</b>	300	Exploration
173	VACAS FLACAS 19	<b>application</b>	300	Exploration
174	VACAS FLACAS 20	<b>application</b>	300	Exploration
175	VACAS FLACAS 21	<b>application</b>	300	Exploration
176	VACAS FLACAS 22	<b>application</b>	300	Exploration
177	VACAS FLACAS 23	<b>application</b>	300	Exploration
178	VACAS FLACAS 24	<b>application</b>	300	Exploration
179	VACAS FLACAS 25	<b>application</b>	300	Exploration
180	VACAS FLACAS 28	<b>application</b>	300	Exploration
181	VACAS FLACAS 27	<b>application</b>	300	Exploration

182	VACAS FLACAS 26	<b>application</b>	300	Exploration
183	VACAS FLACAS 3	<b>application</b>	300	Exploration
184	VACAS FLACAS 4	<b>application</b>	300	Exploration
189	Bloody Good Shot 13A	<b>application</b>	200	Exploration
190	Bloody Good Shot 12A	<b>application</b>	200	Exploration
191	Bloody Good Shot 11A	<b>application</b>	200	Exploration
192	Bloody Good Shot 10A	<b>application</b>	300	Exploration
193	Bloody Good Shot 9A	<b>application</b>	300	Exploration
194	Bloody Good Shot 8A	<b>application</b>	200	Exploration
195	Bloody Good Shot 7A	<b>application</b>	100	Exploration
196	Bloody Good Shot 6A	<b>application</b>	200	Exploration
197	Bloody Good Shot 5A	<b>application</b>	200	Exploration
198	Bloody Good Shot 4A	<b>application</b>	300	Exploration
199	Bloody Good Shot 3A	<b>application</b>	300	Exploration
200	Bloody Good Shot 2A	<b>application</b>	300	Exploration
201	Bloody Good Shot 1A	<b>application</b>	300	Exploration
202	NICE BARREL 1	<b>application</b>	200	Exploration
203	NICE BARREL 2	<b>application</b>	300	Exploration
204	NICE BARREL 3	<b>application</b>	200	Exploration
205	NICE BARREL 4	<b>application</b>	200	Exploration
206	NICE BARREL 5	<b>application</b>	200	Exploration
207	NICE BARREL 6	<b>application</b>	200	Exploration
208	NICE BARREL 7	<b>application</b>	200	Exploration
209	ZORRO 1A	<b>16/Mar/2022</b>	200	Exploration
210	ZORRO 2A	<b>16/Mar/2022</b>	200	Exploration
211	ZORRO 3A	<b>16/Mar/2022</b>	200	Exploration
213	ZORRO 4A	<b>16/Mar/2022</b>	100	Exploration
213	ZORRO 5A	<b>16/Mar/2022</b>	200	Exploration
214	ZORRO 6A	<b>29/Apr/2022</b>	200	Exploration
215	Bloody Good Shot 11	<b>22/Oct/2020</b>	200	Exploration
216	Bloody Good Shot 12	<b>22/Oct/2020</b>	200	Exploration
217	Bloody Good Shot 13	<b>22/Oct/2020</b>	200	Exploration
218	Punta de Diamante 1	<b>14/Feb/2021</b>	200	Exploration
219	Punta de Diamante 2	<b>14/Feb/2021</b>	300	Exploration
220	Punta de Diamante 3	<b>14/Feb/2021</b>	300	Exploration
221	La Negra Coja 19	<b>14/Feb/2021</b>	200	Exploration
222	La Negra Coja 18	<b>14/Feb/2021</b>	300	Exploration
223	La Negra Coja 17	<b>14/Feb/2021</b>	300	Exploration
224	La Negra Coja 16	<b>18/Feb/2021</b>	200	Exploration
225	La Negra Coja 15	<b>18/Feb/2021</b>	300	Exploration
226	La Negra Coja 14	<b>20/Feb/2021</b>	300	Exploration
227	La Negra Coja 13	<b>20/Feb/2021</b>	300	Exploration
228	La Negra Coja 12	<b>20/Feb/2021</b>	200	Exploration
229	La Negra Coja 11	<b>20/Feb/2021</b>	300	Exploration
230	La Negra Coja 10	<b>20/Feb/2021</b>	300	Exploration
231	La Negra Coja 9	<b>22/Feb/2021</b>	200	Exploration
232	La Negra Coja 8	<b>22/Feb/2021</b>	300	Exploration
233	La Negra Coja 7	<b>22/Feb/2021</b>	300	Exploration
234	La Negra Coja 6	<b>22/Feb/2021</b>	200	Exploration
235	La Negra Coja 5	<b>1/Mar/2021</b>	300	Exploration
236	La Negra Coja 4	<b>1/Mar/2021</b>	200	Exploration
237	La Negra Coja 3	<b>5/Mar/2021</b>	300	Exploration
238	La Negra Coja 2	<b>5/Mar/2021</b>	300	Exploration
239	La Negra Coja 1	<b>7/Mar/2021</b>	200	Exploration
185	Buzzard 1, 1 al 300	<b>Converting from exploration</b>	300	Exploitation
186	Buzzard 2, 1 al 300	<b>Converting from exploration</b>	300	Exploitation
187	Buzzard 3, 1 al 300	<b>Converting from exploration</b>	300	Exploitation
188	Buzzard 4, 1 al 300	<b>Converting from exploration</b>	300	Exploitation
240	LEON DOS 1-30	<b>NA - constituted</b>	300	Exploitation
241	LEON UNO 1-30	<b>NA - constituted</b>	300	Exploitation
242	LAS COQUETAS 1/10	<b>NA - constituted</b>	100	Exploitation
243	PATON DOS 1/29	<b>NA - constituted</b>	230	Exploitation
244	PATON UNO 1/29	<b>NA - constituted</b>	240	Exploitation



Notes:

1. All concessions noted as "application" are moving through the application process and there is no legal impediment to them being granted, as announced on 23 September 2020.
2. Constituted exploitation concessions have no expiry.
3. Buzzard concession are currently being converted from Exploration to exploitation.